

# Week-Long High School Winter Carnival Starts Monday

Although snow-plugged roads forced Chelsea schools to remain closed this past week, officials at the high school reported they still intend to proceed with plans for the school's first annual Winter Carnival the week of Feb. 6-10.

Organized to parallel Homecoming Week, celebrated annually in the fall, the Winter Carnival will feature a week-long agenda of both day-time and night-time activities geared to promote class and school spirit. "Teacher Day" and an "Inside-Out" dress-up will kick-off the carnival week on Monday. Teachers will be served coffee

and donuts when they arrive for classes and students will vote for the Most Appreciated Teacher. The winner will receive one class hour of substitute pay. Penny voting will also begin in the Prettiest Legs Contest, to be entered by two male contestants from each class and a mystery guest.

After school Monday, freshmen will decorate the cafeteria for the following day, an all-school snow sculpture contest will begin, and all classes and activity groups will begin work on non-motorized mini-floats which will parade around the gym during half-time of the Chelsea-

Saline basketball game Friday. At 7:30 p.m., a Winter Pops Concert will be presented.

Lunch in the Class of '81 cafeteria will highlight "Freshman Day" on Tuesday, but all students will have a chance to receive recognition by wearing their favorite scarfs to school. Prizes will be awarded for the craziest, longest, and most colorful.

Tuesday evening, the sophomores will take their turn at decorating the cafeteria, and work on snow sculptures and mini floats will continue. Beginning at 5:30 p.m., class competitions will be held in sled-

ding and tobogganing on the football field.

Activities will be stepped up a bit on Wednesday, officially tagged as "Sophomore Day." Students may arrive at school costumed as their favorite character or idol, and will lunch in the cafeteria of '80. Voting will continue in the Prettiest Legs Contest, and begin in the contest for a Carnival King.

Juniors will be busy decorating the cafeteria after the recess of classes Wednesday, and intramural games with teams of mixed gender will commence at 6:30 p.m. in the high school gym. Two 35-minute, three-leg-

ged basketball games have been scheduled, pitting freshmen against the sophomores at 6:30 p.m., and juniors against seniors at 7:15 p.m.

"Junior Day" will be celebrated Thursday in conjunction with a Valentines Dress-up which will give students the option of coming to school dressed in red and white. After lunch in the cafeteria of '79, a Frisbee Assembly will be conducted featuring representatives from each class level in competition against a visiting group of frisbee professionals.

After school, seniors will decorate the cafeteria and intra-

mural game finals will begin at 6 p.m. followed by a banana eating contest at 6:45 p.m. Chelsea's freshman basketball squad will cap the evening's events with a game against Novi at 7:30 p.m.

Special day-time activities Friday, billed as both "Senior Day" and "Blue and Gold Dress-up Day" will begin with the exchange of secret message Valentines flowers. By paying ahead, students will be able to have a carnation delivered to the Valentine of their choice.

Fifth hour, classes will gather outdoors to see which one can build the largest snowman. The

contest will be judged by the high school secretarial staff. After the contest, students will adjourn to the gymnasium for a pep rally sixth hour, where high school basketball players will be recognized, skits will be presented, and prizes will be awarded to class winners of the cafeteria decorating, dress up days, and snowman building contests, all of which will be judged by the high school teaching staff.

A regular half-time gala is planned during the Chelsea-Saline basketball game Friday evening. Following the parade of mini-floats and introduction of the

Carnival King and his escort, prizes will be awarded to the class spirit winner of the week and the winner of a float judging contest. An introduction of senior cagers playing their last season of high school basketball will climax the half-time celebration.

With conclusion of the game, students will be able to dance off their remaining energy at a Valentines Disco Dance in the cafeteria. Door favors will be distributed and refreshments served. No jeans will be permitted at the dance.

Teacher-sponsors at Chelsea (Continued on page three)

WEATHER		
	Min.	Max. Precip.
Thursday, Jan. 26	18	23 1.20
Friday, Jan. 27	22	16 0.55
Saturday, Jan. 28	10	18 0.08
Sunday, Jan. 29	16	22 0.01
Monday, Jan. 30	8	19 0.02
Tuesday, Jan. 31	3	19 0.01
Wednesday, Feb. 1	8	18 0.01

ONE HUNDRED-EIGHTH YEAR—No. 34

12 Pages This Week

Plus 4-Page Supplement

CHELSEA, MICHIGAN, THURSDAY, FEBRUARY 2, 1978

15c per copy

SUBSCRIPTION: \$6.00 PER YEAR

## The Chelsea Standard

### QUOTE

"Mother is the name for God in the lips and hearts of little children."  
—William Makepeace Thackeray.

# Howling Blizzard Paralyzes Area

## Legion Winter Carnival Has Plenty of Snow

Lack of snow is one potential problem guaranteed not to raise its head this week-end as Chelsea Legionnaires begin hosting their fifth annual Winter Carnival.

This year, the event will include a carnival dance and free concert by SCAT, in addition to the usual fishing derby, euchre tournament and snowmobile activities.

The event is scheduled to take place Feb. 4-5, at the Herbert J. McKune American Legion Post No. 31 Home on Cavanaugh Lake. Kick-off time for the carnival will be 7 p.m. Friday with the euchre tournament scheduled to begin shortly thereafter at 7:30 p.m.

Starting time for the annual fishing derby, a traditional carnival favorite, will be 8 a.m. Saturday. First, second and third prizes in perch, pike and panfish categories will be awarded to derby winners at the finish of the contest Sunday, 5 p.m.

Also Sunday evening, euchre tournament winners will be recognized and presented with prizes.

Because of the increasing popularity of the euchre tournament, Legionnaires were prompted to move the starting time to Friday

evening, giving way to an inaugural carnival dance Saturday evening, Feb. 4. The dance, which is already sold out, will begin at 9 p.m.

Day-time entertainment Saturday for those passing up the chance to compete in either the euchre tournament or fishing derby will be provided by "Stretch" Dressler at the piano on the Legion home's upper deck.

More entertainment will follow Sunday afternoon when the four-member group, "SCAT," arrives to present a free concert. Members of the group include Chelsea's Chris Alber, and Wynn Kanten, also a local resident.

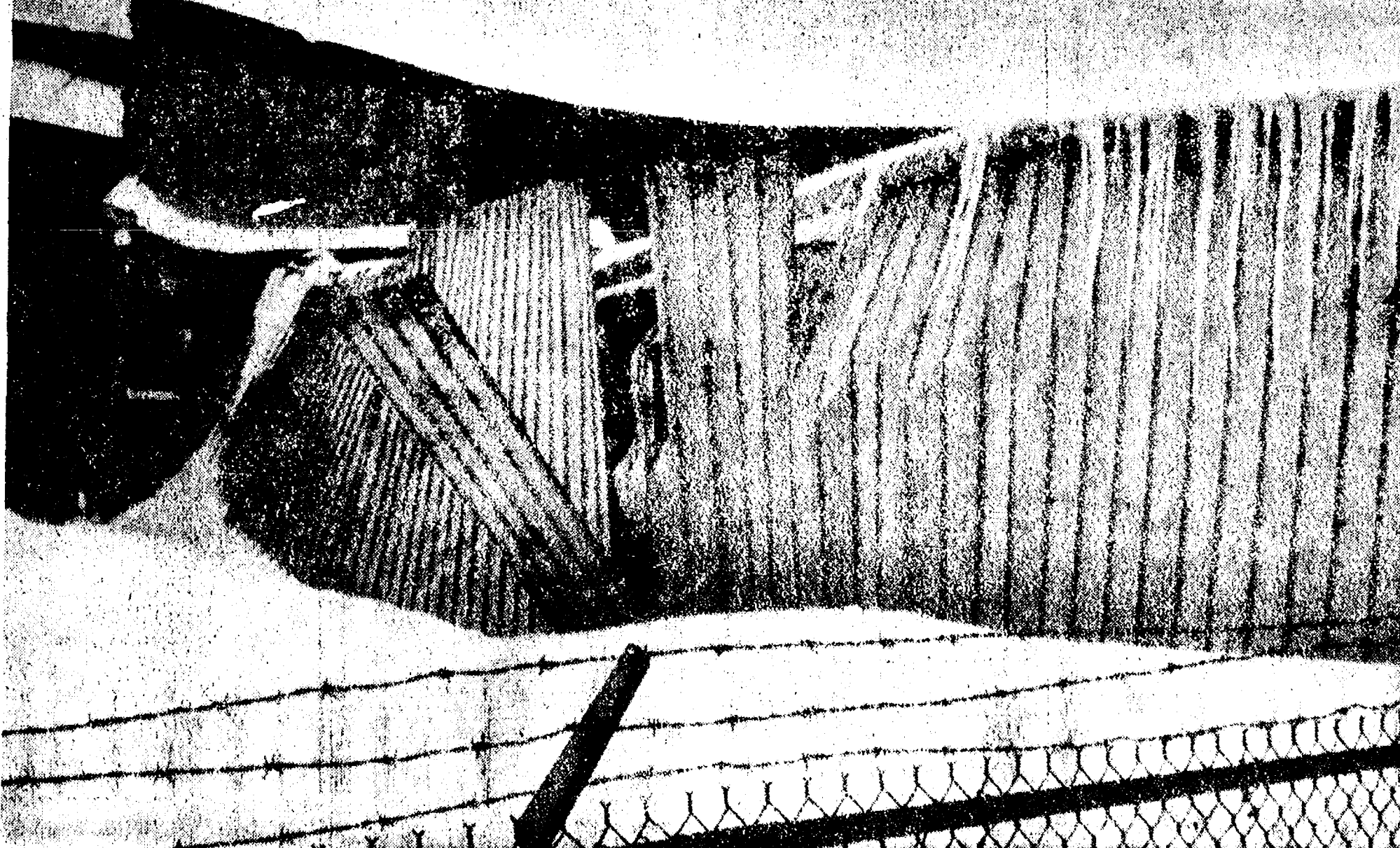
The concert by this highly versatile band was arranged by the Legion to celebrate the opening of its newly-expanded Post. A capacity crowd of 200 will be able to enjoy the concert program in carpeted comfort with a panoramic view of Cavanaugh Lake, according to Pat Merkel, carnival chairman.

Also during the afternoon, outdoor enthusiasts are invited to participate in a multitude of snowmobile activities to be conducted by co-chairmen Frank Hill and "Blacky" Freyre. The duo will provide snowmobilers with trail maps and guides upon request.



**BARE METAL BRACES PROTRUDE** from the boarded-up storefront of Meabon's TV Appliances & Furniture on M-52 Friday after heavy snow from Thursday's blizzard caved in an awning

once supported by the braces, and sent it crashing through two heavy glass display windows. Fortunately, no one was injured and damages inside the store were reported light.



**ROOF CRUMPLED:** Looking very much like the remains of a discarded accordion, this crumpled mass of aluminum was all that was left of a wire storage shed at Chelsea's Rockell International

plant on N. East St. Friday after a heavy snow accumulation from Thursday's blizzard caused the roof to cave in.

## Volunteers Help in Many Emergencies

As Chelsea continued to dig out from under some 18 inches of snow Monday, Police Chief George Meranuck had nothing but praise for the reactions of the community to the howling blizzard that piled up the snow in two days last week-end.

"The co-operation shown by local Civil Defense crews, snowmobilers, four-wheel-drivers, emergency shelter volunteers, and countless other individuals was excellent," he proclaimed.

Among the many singled out by the chief were Chelsea's Civil Defense Director Bill Wade, members of the Chelsea Communications Club, local American Radio Relay League emergency co-ordinator Dave Prohaska, the Inverness Snowmobile Club and police dispatcher Clare Sherman who worked non-stop for three days.

According to Chief Meranuck, village streets were plowed for the most part by late Friday although high winds whipped snow back onto streets in various parts of the village. Road crews, however, were able to keep up, and streets remained passable throughout the week-end.

As Chelsea continued to dig out from under some 18 inches of snow Monday, Police Chief George Meranuck had nothing but praise for the reactions of the community to the howling blizzard that piled up the snow in two days last week-end.

Shortly after the blizzard hit its peak in Chelsea Thursday, drivers of at least 60 semi-trailers found themselves unable to move along I-94 near the M-52 exit. Forced to leave the highway, they lined up their trucks along both sides of M-52 north from I-94 to Old US-12. Semis filled the parking lots at the Wolverine Bar and Polly's Market, both near the intersection of M-52 and Old US-12.

Beyond the village limits, it was people like William Hanna of Pierce Rd., who deactivated potential crises and made it possible for snowbound residents to weather out the storm.

Using his four-wheel-drive truck equipped with a blade, Hanna brought groceries to people stranded in their homes, plowed out driveways and roads in the Kalmbach Rd. and Pierce Rd. areas, hauled out county plows stuck in snowdrifts, and housed five truckers for four days without accepting a penny for his services.

His reason? "It's a good way to meet people and make friends," Hanna said.

## Neither Rain, Nor Sleet Nor . . . But Snow, Yes!

Mail deliveries in Chelsea and surrounding township areas were halted for three days last week-end after a two-day blizzard smothered Washtenaw county and southern Michigan under a 13-inch blanket of new snow.

No mail came in or out of the Chelsea Post Office from early last Thursday until Monday.

However, by Monday, village carriers were able to begin delivering most of the mail that had been brought into the post office prior to Thursday, and with highways partially opened, a truckload of out-of-town mail was also dispatched.

## Snow Caves in Roof, Breaks Show Windows

An accumulation of nearly 18 inches of heavy snow from the blizzard that began last Thursday damaged the roof of at least one local plant and the storefront of a local business firm last Friday.

No injuries were reported in either incident, however.

The roof of a wire storage area at Rockwell International's Mechanical Devices Division, 401 N. East St., caved in sometime early Friday morning, causing damages estimated at \$30,000.

The cave-in was discovered by night security personnel, according to Donald E. Baldwin, plant manager, who added workers have since shoveled off other roofs to prevent similar incidents.

Elsewhere in Chelsea, heavy snow toppled an awning on Meabon's TV Appliance and Furniture Store, 1170 S. Main St., breaking the two large plate glass windows in the front of the store.

## Schools Closed, Traffic Halted By Snow Drifts

Chelsea was paralyzed by a two-day blizzard that raged through southern and southeastern Michigan last week prompting President Carter to declare the state a federal disaster area.

Some called the snowstorm the state's worst on record.

Governor Milliken ordered 1,100 National Guardsmen to begin providing disaster relief to some of the hardest hit areas in Michigan last Thursday, and followed that up with a request for federal disaster relief Friday after completing a brief helicopter inspection of storm stricken areas near Lansing.

In Washtenaw county, rated the fifth hardest hit county in Michigan, almost a foot of new snow fell at the rate of an inch per hour last Thursday, piling on top of another six inches already on the ground.

While intermittent flurries continued Friday, winds gusting up to 47 mph bolstered the storm's tenacity by whipping the previous day's snow into drifts as high as 15 feet on some rural roads.

Like many other areas throughout the county and the state, Chelsea was cut off from all outside communities Thursday afternoon when both I-94 and M-52, its two main traffic arteries, were closed to all but emergency traffic.

The move marooned scores of travelers, most of them truckers, who were evacuated to Red Cross emergency shelters such as the ones set up in Chelsea High school and Chelsea's VFW Hall on Main St. By Friday, more than 200 stranded motorists filled the Chelsea High gymnasium where they bedded down on wrestling mats and army cots to wait out the storm.

Both locally and throughout the state, schools and industries shut

down, food shortages were reported by grocery stores still operating as the storm continued, and some areas were left without electric service as the blizzard downed power lines.

Snowmobilers, four-wheel-drive vehicle owners, and radio volunteers were enlisted by snow emergency crews to help evacuate persons in need of medical attention, and those stranded by the storm. They also helped locate and deliver food packages to those snowbound in their homes and were solicited to help in the digging out process which went into full swing Saturday.

By late Saturday afternoon, Civil Defense officials co-ordinating road crews and rescue efforts from a former gymnasium at the Washtenaw County Sheriff's complex on Hogback Rd., Ann Arbor, were finally able to say that the "snow condition red" imposed at 1 p.m. Wednesday was expected to be lifted shortly.

That indicated road conditions were returning to normal.

The state of emergency in Washtenaw county was requested by a Snow Emergency Council made up of representatives from law enforcement, highway, and other service agencies. The governor's declaration brought all such functions under the co-ordination of Civil Defense, headed up in the county by Sheriff's Sgt. John Kosty.

According to meteorologists from the University of Michigan and the U. S. Weather Service, the winter storm that struck Thursday was the result of two major low pressure fronts colliding over the area.

On Thursday, the barometric pressure reached an all-time record low of 28.34 in the local area. The lowest previously recorded was 28.65 on March 9, 1947.

## Grocery Shelves Stripped Nearly Bare

Area shoppers who managed to battle their way through the snowdrifts to the grocery store last week-end were confronted by a shortage of bread, milk, meat and snacks as suppliers were unable to make deliveries.

Manpower shortages also forced some local groceries to curtail their hours over the week-end.

Shelves at Polly's Market, 1101 M-52, were nearly picked bare by late Saturday when I-94, Chelsea's main commercial artery, finally reopened.

While the highway reopening allowed supplies to begin trickling through, a few stores, including Polly's, reported they were still unable to get milk as late as Monday afternoon.

Rick's Market, 20490 Stockbridge, was another area grocery awaiting a milk delivery at mid-day Monday.

"We were told we'd be getting some milk in this morning, but we're still without it," an employee said. "However, we expect it anytime today."

Rick's operates an on-site bakery and because of the storm, some 60

loaves of bread were made Saturday. All were sold out along with 60 additional loaves delivered by Way Baking Co. on Sunday though customer traffic was described as "slower than normal."

Two downtown Chelsea groceries, Kusterer's Market and Schneider's Grocery were the only ones in the area able to maintain regular hours and a full working staff during the past week.

While Kusterer's was able to stock up on its milk supply from a semi-load off I-94 on Saturday, "bread was a little short," according to Luther Kusterer, owner of the grocery.

At Schneider's, Howard Flintoft reported that business was brisk throughout the week-end. "A lot of people shopped here, including a lot of strangers, apparently stranded in the area," he said.

The grocery did its best to accommodate people, according to Flintoft, but nevertheless bread and milk sold out early. "Luckily, we had enough meat to carry us through today when we were finally cleaned out, but we expect to be

(Continued on page three)



Established 1871 **The Chelsea Standard** Telephone 475-1471  
 Excellence Award By Michigan Press Association  
 1931-1952-1960-1964-1965-1968  
 Walter P. Leonard, Editor and Publisher

Published every Thursday morning at 300 North Main Street, Chelsea, Mich. 48118, and second class postage paid at Chelsea, Mich., under the Act of March 3, 1879.

Subscription Rates (Payable in Advance)  
 In Michigan: One Year .....\$6.00  
 Six Months .....\$3.50  
 Single Copies .....\$ .20  
 Outside Michigan: One Year .....\$8.50  
 Six Months .....\$5.00  
 Single Copies .....\$ .25

MEMBER **NATIONAL PAPER ASSOCIATION** - Founded 1885  
 National Advertising Representative: MICHIGAN NEWSPAPERS, INC.  
 257 Michigan Ave.  
 East Lansing, Mich. 48823

## JUST REMINISCING

Items taken from the files of The Chelsea Standard

### 4 Years Ago...

Thursday, Feb. 7, 1974—

Four hard-working scouts of Troop 476—Bob Blank, Bob Burgess, Mike Stoner, and Don Oesterle—were honored Saturday night when they received the rank of Eagle Scout at an Eagle Scout Banquet and Court of Awards in their honor.

Chelsea High school senior Jim Storey has been announced as a candidate to compete for an appointment to the United States Naval Academy from the Sixth Congressional District. Storey was listed in a group of nominees released by Republican Congressman Charles E. Chamberlain.

A \$5 check was awarded to Joe Marentette by Mrs. Jane Lehman, Beach Middle school librarian, for his first-prize entry in the poster contest at Beach publicizing this week's book fair. Receiving honorable mentions in the contest were John Koepke, Bill Klobuchar, Brian Koepke, Denise Geddes, Shelly Hatt, Sarah Haselschwardt and Nancy Hadley.

Winners of this past week-end's annual fishing contest, sponsored by the Herbert J. McKune American Legion Post No. 31 in Chelsea were Jim Wutke in the perch category, Steve Figg in the panfish division, and Ron Schweda in the pike category. The contest was held on Cavanaugh Lake during the Legion's Winter Carnival.

### 14 Years Ago...

Thursday, Feb. 6, 1964—

Larry Arthur Chapman, a Chelsea Village Council trustee and a laboratory technician at Chelsea's Chrysler Proving Grounds, was named recipient of the Chelsea Jaycees' Distinguished Service Award Tuesday evening for his outstanding record of service to the community.

Chelsea and Dexter are included in a new athletic league which goes into operation at the beginning of the 1964 football season. The new league is to be known as the Southeastern Conference. The winning name was submitted

by Charles "Chip" Winans, a CHS freshman.

St. Louis School for Boys, west of Chelsea, has been stocked with supplies furnished by the United States Government for a public fall-out shelter. The facility will accommodate 200 persons, plus the school's faculty and student body, according to Civil Defense Director Elwyn Beach.

### 24 Years Ago...

Thursday, Feb. 4, 1954—

Anton Nielsen, Chelsea Village President, proclaimed Tuesday, Feb. 9, as Michigan Outdoors Day in Chelsea in support of the Chelsea Rod and Gun Club's conservation activities and their sponsorship of Mort Neff, a leading authority on Michigan outdoor life.

W. J. Grossman was unanimously selected as captain of the local Auxiliary Police, a Civilian Defense unit responsible for the orderly execution of police duties in the village and surrounding community in case of disaster or emergency.

A new downhill ski area was opened this past week-end by the Michigan Department of Conservation in the popular Pinckney Recreation Area, 15 miles northwest of Chelsea, according to an announcement by Ernest A. Botke, Jr., park manager. Approximately 250 people were on hand last week-end to enjoy the popular winter sport.

To acquaint electors of Sylvan township with the proposed Sylvan township zoning ordinance which is to be the subject for a referendum March 9, a series of explanatory articles has been prepared for publication by a group of interested citizens.

### 34 Years Ago...

Thursday, Feb. 3, 1944—

At the 80th annual meeting of the Michigan State Millers Association, held last Friday at the Hotel Book-Cadillac in Detroit, Howard S. Holmes, president of Chelsea Milling Co., was elected president of the association.

Chelsea is stepping up its in-

(Continued on page five)

## MICHIGAN MIRROR

By Warren M. Hoyt, Secretary, Michigan Press Association

### Long Year of Politics

Politics and tenuous political futures will rule the state during 1978, as the Michigan Legislature returned to the capital city last week.

Politics sprinted to the forefront as individual legislators rushed to beat Governor Milliken to the punch before his scheduled State of the State address.

The legislature opened with House Speaker Bobby Crim of Davison addressing the legislature to give marching orders for 1978. The Senate, for the first time in history, recessed to hear the speaker's address in an informal joint session.

Crim dropped the banner of Democratic gubernatorial hopeful last year saying he was not interested in the state's highest office and his pulling out of the race would allow him to complete his legislative tasks without charges of politics entering the picture.

Speculation continues to increase now that Crim would be open to a party draft for the nomination and has been whispering that message into influential ears.

Milliken on the following day addressed a joint legislative session where he painted a rosy—or green—state economic picture and offered to the voting public an \$85 million financial relief program composed of tax cuts and assistance for home heating bills.

Milliken, who is completing his 10th year as a Republican governor in a basic Democratic state, has yet to announce his intentions as to whether he will seek the office for an additional four years.

His message to members of the 79th Legislature contained no hints of his future political plans, but statements in the address sounded like a promising, energetic politician about to again enter the hunt.

During the state of the state, Milliken sounded like a politician handing out promises to the electorate in return for a favorable vote.

The state of the state is excellent in many respects, Milliken claimed. He cited a record level of employment, lower crime and progress in getting an increased return of federal dollars.

Milliken proposed that taxpayers would share in a \$35 million tax cut by an increase in the personal exemption by \$100, effective Jan. 1, 1979. The plan would cut taxes, however, by only \$4.50 per person per year.

Immediate reaction to the governor's address was typically political.

Republicans aligned themselves behind the Milliken proposals expressing pleasure of the upturning economy under the Republican administration.

Democrats, meanwhile, said there were no surprises in the message and the speech was a political state of the address for the beginning of a political year.

Sen. Patrick McCollough (D-Dearborn), chairman of the Senate Finance Committee and an announced candidate for the Democratic nomination for governor, seemed rehearsed when reacting to the Milliken address.

Pulling supportive documents from a file immediately following the address, McCollough charged that even though there was a proposed \$85 million tax cut, Milliken's total tax bill will be for the year. He noted the proposed two cent per gallon gasoline tax hike and a proposed motor vehicle license weight tax increase.

The governor pleads poverty during non-election years and dur-

ing election years, announces a state surplus with plans to return money to the public," McCollough said.

Sen. William Fitzgerald (D-Detroit), chairman of the Highways and Transportation Committee and another announced Democrat candidate for governor, said Milliken's proposed tax cut places the transportation package in jeopardy. He said the governor is proposing to return progressive taxes (income tax) and turn around and increase a regressive tax (gasoline and vehicle license fees).

Speaker Crim labeled the governor's tax plans an "election-year gimmick." He said it was a very smooth speech, just the kind expected from an incumbent governor who is running for reelection.

So, with the first round of speeches now history, the tone has been set for 1978.

Until 4 p.m., June 6—filing deadline for nominating petitions for the primary election—everyone remains a potential candidate and comments must be tempered with politics.

After that date, declared candidates will be bombarding people until after the November general election.

As in all other election years, 1978 will be a year of great promises given and many frustrations received by the more than nine million Michigan residents.

This year, however, the electorate will have to endure the campaign for a much longer period as the announced and non-announced candidates are off fast with the dawning of election year 1978.

### Snowmobilers

### Injured on

### Mercy Mission

A pair of snowmobilers on a mercy mission were injured slightly early Saturday, Jan. 28, in an accident with a front end loader near Manchester following the severe storm which struck the area last week, according to the Washtenaw County Sheriff's Department.

The report stated that Robert and Rita Burkhardt, 19835 Bethel Church Rd., Manchester, were responding to a report of a heart attack victim at 15210 Schlewie Rd. upon the request of the Manchester Police Department at 4:20 a.m., and were following a front end loader, when the loader lost traction on a hill, slid backward and crushed the snowmobile. The Burkhardts suffered minor injuries when they jumped off the vehicle, it was reported.

### Council on Aging

### Begins Seminar Series

### To Help Widows

Washtenaw County Council on Aging is beginning a series of eight group seminars to help recently widowed women over the age of 60 cope with the complex and trying issues of widowhood. The discussions will include topics such as financial planning, employment opportunities, legal issues, adjustment difficulties and other problems of individual concern.

The sessions will take place on Wednesday afternoons from 1:30 to 3:30 at St. Andrew's church, Ann Arbor, beginning Jan. 25 and continuing until March 15. There will be no cost to the participants.

If you are interested or know someone who might benefit please contact Linda Buelow or Lisa Frisinger at 663-6800.

Telephone Your Club News To 475-1471.

### "SATURDAY NIGHT FEVER"

LP - \$5.55

8-TRACK TAPE

\$5.75

at

### THE MUSIC HUTCH

10 a.m.-5:30 p.m.

8107 Main St., Dexter

Ph. 426-4380

### St. Paul United Church of Christ

2nd ANNUAL

## SMORGASBORD

SHROVE TUES., FEB. 7th

Adults \$4 - Children 5-14 yrs., \$2.50. Under 5 free

Tickets are available from the Confirmation Class, Church Office, Grove's, Chelsea Day Spring Card & Gift, Schneider's, and Jack & Son Barbers. Tickets will not be sold at the door.

Proceeds will be used for the Confirmation Class 1979 St. Louis, Mo., study tour.

For further information call 475-2545

### Kiwanis Club

### Sale Slated

### This Week

The 42nd annual sale of the Kiwanis Club of Ann Arbor Downtown will be held Thursday, Friday and Saturday at the Kiwanis Activities Center, W. Washington and First Streets, Ann Arbor.

Fred H. Jaeger and Ronald C. Wolf, this year's sale co-chairmen, are confident that this year's sale will be "bigger and better than ever" and the merchandise features everything from furniture, appliances, antiques and television sets in the basement to draperies, handbags, and white goods on the top floor. All three floors of the building will be used for the sale and the entire event will be dedicated to the memory of Fred Schmidt, Louis Holloway, Ralph Root and Ashley Clague, prominent Kiwanians who died recently and who had worked many hours on previous sales.

More than 170 Kiwanians and their families staff the sale. All proceeds are used for the more than 100 club projects expenses for the entire year. Chief recipient is the Hospital School at the C. S. Mott Children's Hospital, with additional funds going to 4-H sponsorship, camperships, kid baseball and hockey, Boy Scout and Girl Scout work, underprivileged and crippled children's work, drug abuse education, hearing aids for the deaf, learn-to-swim program at the YM-YWCA, and many other programs for children and senior citizens.

Large donations in the past have been given Spaulding for Children, the Lurie Terrace Men's Lounge, YM-YWCA building fund, the bookmobile for the Ann Arbor Public Library and outfitting the Ashley Clague Room at the C. S. Mott Children's Hospital.

The co-chairmen say they hope \$40,000 will be raised from the three-day event. Hours will be 10 a.m. to 8 p.m. on Thursday, noon to 8 p.m. on Friday and 9 a.m. to 2 p.m. on Saturday. A snack bar will be open on the second floor all during the sale with light lunches being served.

Additional information on the proper handling of W-2 forms is available in the IRS Publication 15, "Circular E - Employer's Tax Guide," obtained from IRS District offices.

Keep smiling. It makes everyone wonder what you've been up to.

### DON'T MISS THE ANNUAL

## KIWANIS SALE

Thurs., Fri., Sat., Feb. 2-3-4

10 a.m. 12 Noon 9 a.m.  
to 8 p.m. to 8 p.m. to 2 p.m.

at the **KIWANIS ACTIVITIES CENTER**

Corner of W. Washington and First Sts., Ann Arbor

3 Floors of Furniture, Clothing, Books, Shoes, Hardware,

Toys, Bicycles, White Goods, etc.

### Nearly All Roads

### Partially Cleared

According to the Washtenaw County Road Commission, 99 percent of the roads in the county have been cleared to the extent of at least one lane in the wake of last week's blizzard, which left most thoroughfares impassable for a four-day period.

At present, all of the roads are described as "extremely slippery," and every unit is involved in sanding and salting operations to reduce the hazard, with local contractors helping out. Snowplows began Tuesday, Jan. 31, to widen the paths cleared along county blacktop roads during the week-end.

Motorists are advised to proceed slowly and with caution while traveling anywhere within the county.

### Employees Should

### Receive W-2's By

### End of January

Employers have until Tuesday, Jan. 31, to provide their employees with completed W-2 Forms for 1977, the Internal Revenue Service said today.

Unless the forms are received by that date, employees will have to wait until February or later to file their tax returns, possibly missing out on the quick refunds available to early filers. If a W-2 is not received by Jan. 31, an employee should contact the employer concerned.

If the W-2 is not issued by Feb. 15, the employee should then contact a local IRS office.

Employees who do not receive all of their W-2's in time to file should report all of their income and attach a statement explaining tax computations for which W-2's are missing.

Additional information on the proper handling of W-2 forms is available in the IRS Publication 15, "Circular E - Employer's Tax Guide," obtained from IRS District offices.

Keep smiling. It makes everyone wonder what you've been up to.

### Girl Scout Assoc.

### Meeting Postponed

### Until Feb. 9

The Western Washtenaw Girl Scout Association has postponed its meeting until Thursday, Feb. 9, at 7:30 p.m. at St. Andrew's United Church of Christ, 7610 Ann Arbor St., Dexter.

All Girl Scout adults and girls over 14 are invited, and all attending are asked to bring a craft and written instructions. One highlight of the meeting, which is presented by Cadette Troop 156, Dexter, Mrs. Sandy Armbruster, leader, will be a talk about money by staff members from the Huron Valley Girl Scout Council.

### Howell

### Livestock Auction

Starts 1 p.m. Every Monday  
 Mason 676-5400

The Wise Owl Says Ship to Howell  
 Phone 546-2470 Bim Franklin

Market Report for Jan. 30

### CATTLE—

Bulk Good-Choice Steers, \$44 to \$45.50  
 Top High-Choice Steers, \$45.50 to \$46  
 Good-Choice Heifers, \$38 to \$45  
 Fed Holstein Steers, \$38 to \$41  
 UT-Std., \$38 and down.

### COWS—

Heifer Cows, \$32 to \$35  
 UT-Commercial, \$27 to \$32  
 Canner-Cutter, \$24 to \$27  
 Fat Best Cows, \$28 to \$30.

### BULLS—

Heavy Baldies, \$35 to \$42  
 Light and Common, \$35 and down.

### FEEDERS—

400-600 lb. Good-Choice Steers, \$42 to \$44  
 600-800 lb. Good-Choice Steers, \$38 to \$42  
 300-400 lb. Good-Choice Heifers, \$28 to \$35  
 300-500 lb. Holstein Steers, \$30 to \$35  
 500-800 lb. Holstein Steers, \$25 to \$30  
 Common & medium, \$25 and down.

### CALVES—

Prime, \$70 to \$75  
 Good-Choice, \$60 to \$70  
 Heavy Deacons, \$45 to \$60  
 Slaughter Ewes, \$15 to \$20  
 Calfes going back to farms sold up to \$35.

### SHEEP—

Woolled Slaughter Lambs, Springs:

Choice-Prime, \$29 to \$30  
 Good-Utility, \$25 to \$29  
 Slaughter Ewes, \$15 to \$20  
 Calfes going back to farms sold up to \$35.

### HOGS—

210 to 240 lbs., No. 1, \$47 to \$48  
 200-250 lbs., No. 2, \$44 to \$47  
 Heavy Hogs, 250 lbs. up, \$38 to \$44  
 Light Hogs, 200 lbs. down, \$30 to \$36.

### Sows:

Pancy Light, \$38 to \$39  
 300-500 lbs., \$38 to \$39  
 500 lbs. and up, \$32.50 to \$39.50

### Bags and Stags:

All Weights, \$31 to \$35

### Feeder Pigs:

Par Brand, \$12 to \$45  
 Est. 40 lb. pigs, \$32 to \$36

### HAY—

1st Cutting, per bale, \$1.25 to \$1.65  
 2nd Cutting, per bale, \$1.50 to \$1.85

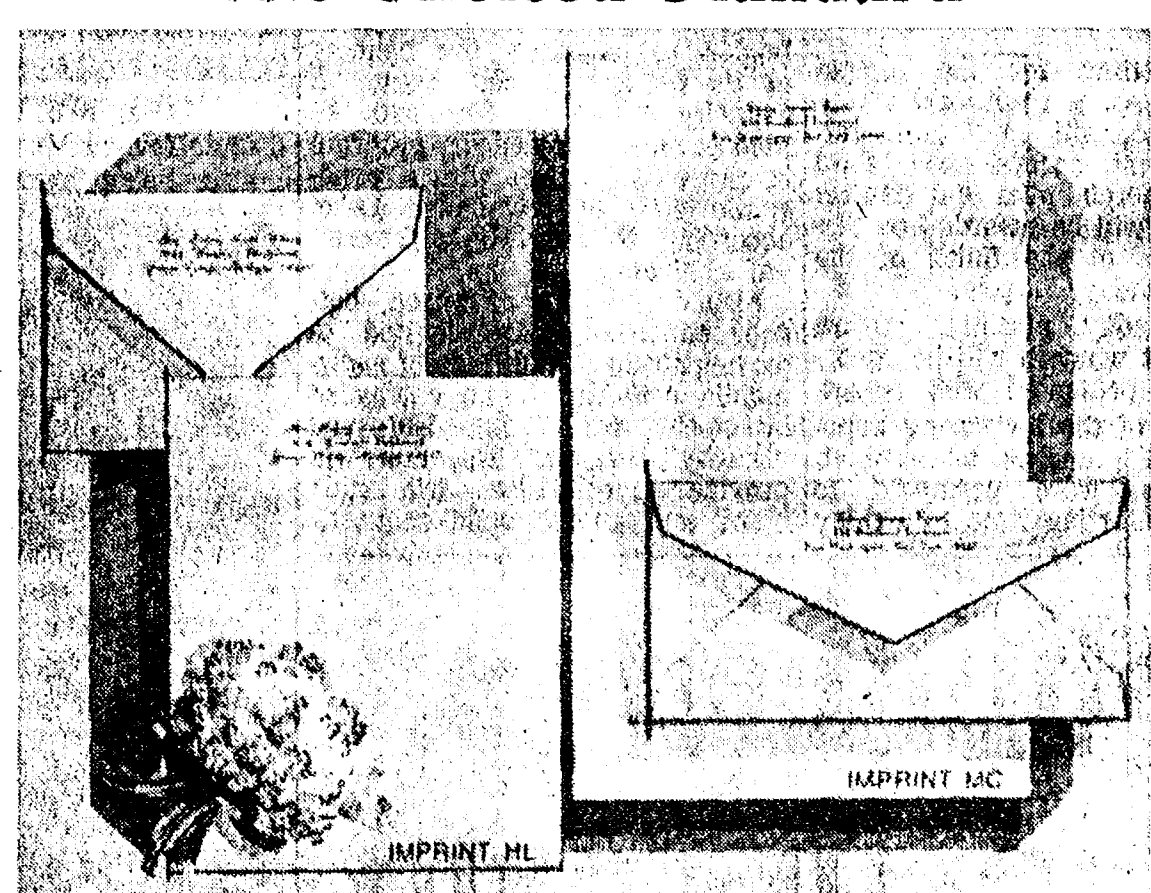
### STRAW—

Good Bale, 80c to \$1.20

### COWS—

Tested Dairy Cows, \$300 to \$600  
 Tested Beef Type Cows, \$200 to \$400

## The Chelsea Standard



### February Sale . . . Save 40%

### Rytex Hand Craft Vellum, Now \$6.95

Regularly \$12.00. The luxurious, damask-smooth personalized stationery you'll use with pride. Choose the paper size and color that suits your writing taste. Select Princess (5 3/4 x 7 3/4) or Monarch (7 1/4 x 10 1/2) size in white, pale blue or soft grey. Choice of imprint styles as shown (HL or MC) printed in deep blue, dark grey or raspberry red ink. Beautifully gift boxed: 100 printed sheets & 100 matching envelopes.

Bonus: 50 extra, unprinted sheets for second pages, \$2.00 with order.

THE CHELSEA STANDARD, 300 N. Main, Chelsea, Mich. 48118

Send \_\_\_\_\_ boxes HAND CRAFT VELLUM at \$6.95. Include ☐ 50 extra, plain sheets at \$2 each box.

Imprint Name \_\_\_\_\_

Address \_\_\_\_\_

City, State, Zip \_\_\_\_\_

Choice of Paper (for size and color)

Princess size in: ☐ White (1000) ☐ Blue (1050) ☐ Grey (1060)

Monarch size in: ☐ White (1200) ☐ Blue (1250) ☐ Grey (1260)

Imprint Style: ☐ HL ☐ MC

Ink Color: ☐ Blue ☐ Deep Gray ☐ Raspberry red

ORDERED BY \_\_\_\_\_

Address \_\_\_\_\_ Apt. \_\_\_\_\_

City, State, Zip \_\_\_\_\_

Account No. \_\_\_\_\_ Phone \_\_\_\_\_

☐ Charge ☐ Payment Enclosed. Sorry, no C.O.D. or phone orders.

Please include Michigan Sales Tax.



## SNOW DISASTER SALE!

We've never heard of such a sale before, but here it is! We must clear out dozens of pieces so we can repair our storm-damaged building.

## FURNITURE - APPLIANCES

## TELEVISIONS

Some with slight dents, scratches or water marks. All being offered at big savings for quick sale.

### OUR LOSS CAN BE YOUR GAIN!

KROEHLER, BASSET, TELL CITY, DIN AIRE FURNITURE & LAMPS  
 FRIGIDAIRE, MAGIC CHEF, KITCHENAID, EUREKA APPLIANCES  
 ZENITH TELEVISIONS, RADIOS, STEREOS.

## MEABON'S TV, FURNITURE & APPLIANCES

1170 M-52, Chelsea Ph. 475-1666



## JC Auxiliary Fills Vacant President's Post

### President's Post

A monthly membership meeting of the Chelsea Jaycee Auxiliary was conducted Tuesday, Jan. 24, at the home of Sandy Meyer, 18905 Old US-12. Co-hosting the affair was Lou Tudor.

Three special guests from the Ypsilanti Jaycee Auxiliary attended the meeting, including its president, Lana Simpkins. Also attending as a guest was Kathy Clark, wife of new Jaycee Dave Clark.

President Barb Baker opened the agenda with a report on correspondence received by the Auxiliary during the past month. Included was a letter of resignation from Vice-President Jeannie Messing.

Old business followed with reports on Lunch With Santa by Dennis Martell; Joint Christmas Dinner, Family Christmas, Needy Kids Christmas, and Blood Drive by Louise Ponte; and Silent Auction by Alberta Colby.

Sue Zink, chairman of Hospital Scrapbook and Dog Food Drive, announced a work session at her home. She stated this year's scrapbook would be donated to the North Territorial Family Clinic, and the Dog Food Campaign would be launched around Valentine's Day.

In between old and new business, the Auxiliary deviated from its usual refreshments of punch and dessert by holding a wine tasting session. Six bottles were sampled and shared by the Jaycees and their guests. Various crackers, meats and cheeses were also served.

After a half-hour of fellowship, the meeting was called back to order with a request for volunteers to assist the Jaycees with two of their upcoming projects. Accepting chairmanships were Dennis Martell for Casino Party, and Sandy Meyer for the Distinguished Service Award Banquet.

This year's Auxiliary Cribbage Tournament will be co-ordinated by Louise Ponte and the Crazy Card Party will be jointly organized by Alberta Colby, Dennis Martell and Sandy Meyer. Dates for both events will be announced at the next meeting.

President Barb Baker then gave notice to members of a by-law change to be voted on at the upcoming February meeting. Since Chelsea is a member of the Michigan Jaycee Auxiliary (MJA), and the MJA recently voted itself into national membership, the local organization must alter its by-laws to read it is also a national Jaycee member.

The president further reported

## Child Study Club Studies Antiques

Chelsea Child Study Club met Tuesday, Jan. 24 at the home of Mary Jo Miller with 25 members and eight guests present. Guests for the evening were Sue Williams, Jan Cooly, Jean Lewis, Barbara Stephenson, Beverly Yelsik, Judy Parker, Kathy Frisinger and Judy Richardson.

Carol McElroy was welcomed as a new member.

After a short business meeting Mary Jo Miller and Diane Borton started the program of "Collectibles" asking members and guests to identify 12 antique food utensils and explained their use. A very informative talk was given on types of items collected, what to look for, usable antiques, refinishing tips and much more.

Co-hostesses for the meeting were Pat Stirling and Betty Cox. Next meeting will be Feb. 14, 8 p.m., at the home of Wyn Schumann. Wine tasting party and "Sweetheart Night."

## Past Noble Grands

Past Noble Grand Club of the Chelsea Rebekah Lodge No. 130 met Tuesday, Jan. 17 at the home of Marion Pickell for a dessert lunch.

At the business meeting, the following were elected to office for 1978: Olla Voelm, president; Mary Ann Coltre, vice-president; Marion Pickell, treasurer; Evelyn Hale, secretary.

The club will make Easter decorations for the Ypsilanti State Hospital, to be taken there with a collection of gifts prior to that time.

Next meeting will be held at the home of Lucile Alstaetter, Feb. 14, 7:30 p.m.

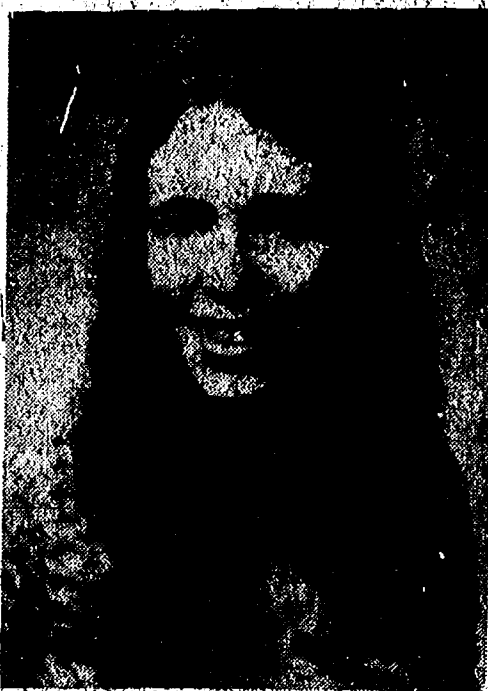
Games furnished the diversion of the evening, with the door prize won by Helen Harris.

that the Winter Board is scheduled to meet in Livonia Feb. 10-12, and the Five Outstanding Men and Five Outstanding Women of Michigan will be announced at the State Meeting. Former U.S. President Gerald Ford is a past recipient of this honor.

Sandy Meyer was named "Girl of the Month" for November, and Louise Ponte for December. Mrs. Ponte also received the "90 Day Wonder" award for her extensive involvement in projects from October through December. Ginny Wheaton was not present to accept the "Boobie Award," but Auxiliary members went on record saying they "knew she could use the endowment."

Before the meeting adjourned, an election was held to fill the vacancy created by Jeannie Messing's resignation as vice-president. Carol Smith, current director, was unanimously selected to fill the vacancy, but her election left the directorship empty. Dennis Martell was then voted in as the Auxiliary's new board member.

The two were installed, congratulated, and the meeting adjourned with the Creed.



**CASTLE-FOSTER.** Mr. and Mrs. Ballard J. Castle of Stockbridge have announced the engagement of their daughter, Christine, to Patrick C. Foster, of 311 South St., son of Mr. and Mrs. Dudley Foster of Grayling. The bride-elect is a 1974 graduate of Stockbridge High School and is employed by IPSCO. Her fiancé is a 1972 graduate of Chelsea High School and is also employed by IPSCO. A May wedding is planned.

## Cribbage Tournney Starts Monday At Beach School

Only four days remain before area cribbage players begin pegging their way through the opening round of a month-long, community-wide Cribbage Tournament, being sponsored by the Chelsea Jaycee Auxiliary.

The tournament will be conducted Monday evenings, beginning Feb. 6, 7 p.m., in the Beach Middle school cafeteria.

Contestants will be required to pay a \$2 entry fee the first night of play. Registration is scheduled to begin at 6:30 p.m. that evening.

All those competing in the tournament must come equipped with their own cribbage boards and cards. Score sheets will be provided.

For more information, on the tournament call Ginny Wheaton at 475-7412, or Louise Ponte at 475-9191.

## Winter Carnival...

(Continued from page one)

High who have helped Assistant Principal Nancy Schave organize the Winter Carnival program are: June Winans, Senior Class; Bob Janich, Junior Class; Bruce Boughner, Sophomore Class; and William Bainton, Freshman Class.

## Travel Film Slated For Winter Respite

A brief respite from blizzard-wracked surroundings is in store for those attending "Hawaii," the fourth of six travelogues in the Chelsea Kiwanis Club's 17th annual Travel and Adventure Series.

The travelogue will be presented Saturday, Feb. 4, 8 p.m., in the Chelsea High school auditorium.

Often called the "Paradise of the Pacific," the Hawaiian Islands are famous for their beauty, climate and warmth of the people.

"Hawaii" will be narrated by Dennis Cooper, whose quiet humor and factual presentations have earned him great popularity wherever he has appeared, and will include visits to Kaula, the "Garden Island," renowned for its spectacular Na Pali Coast, and to Waikiki Beach, Pearl Harbor and Diamond Head all on the island of Oahu.

Cooper also plans to take his audience exploring through the sugar cane fields of Maui and the whaling port of Lahaina. A walk along the black sand of Hawaii's Kona Coast and a stroll through fields of exotic orchids will round out the adventure.

Born in Spokane, Wash., Cooper, reared from the city to lumber camps owned by his father, the late Senator George R. Cooper, almost before he could walk.

He temporarily abandoned the woods and mountains to study engineering in college, but eventually yielded to the call of "the great outdoors" and returned to the mountains of western Montana, where he and his brother, Don, ran a logging and sawmill operation for several years.

Always interested in photography, Cooper one day decided to photograph trees rather than saw them. He traded his chain saw for a camera, and his logs for film, and entered the world of travelogue photography. His film adventures have been received with enthusiasm by travelogue audiences throughout the nation.

Tickets to "Hawaii" are currently on sale and may be purchased from any Chelsea Kiwanian, from various local business firms, or at the door Saturday night.

At the beginning of 1975, nearly 46 percent of all women 16 and over were in the labor force, according to "U.S. Working Women, a Chartbook," issued by the U.S. Department of Labor's Bureau of Labor Statistics.

**Please Notify Us of Any Change in Address.**



DENNIS COOPER

## Soil Conservation District Annual Meeting Scheduled

Washtenaw County Soil Conservation District's 28th annual meeting is scheduled for Tuesday, Feb. 7, at 8 p.m. It will be held at the Pittsfield Grange Hall on Saline-Ann Arbor Rd. The public is invited.

Featured speaker for the evening is Roger Akeley, Jr., Non-Point Co-ordinator with the Southeastern Michigan Council of Governments. He will speak on the topic "Water Quality in Washtenaw County—How Do You Manage That?" Akeley will discuss how the "208" Project will effect agriculture in Washtenaw County.

Also on the agenda is election of two district directors, entertainment, door prizes, conservation awards and a buffet luncheon.

All interested persons are invited to attend. Advance reservations are not required.

## Grocery Shelves Nearly Stripped Bare

(Continued from page one)

back in business, tomorrow," he said Monday afternoon.

Gene Shoemaker, owner of Jiffy Market, was under siege by snow the longest of all area groceries. After Thursday's storm struck, Jiffy Market remained closed until Saturday morning.

But working with a skeleton

## Girl Scout Cookie Sale Is Underway

The Girl Scout Cookie Sale is going on now through Sunday, Feb. 12, as scouts all over Washtenaw county strive to sell 400,000 boxes of cookies in the annual event.

Profits will go toward the construction of a new troop house at Camp Crawford and the up-keep of camps Linden and Hilltop, with some set aside to provide services for troop leaders from Council Staff, troop activities, and equipment.

Six different types of cookies are being offered this year, including Thin Mints, Peanut Butter Patties, Sandwich Cremes, Shortbread, and Snow Drops.

Girls selling one or more boxes will receive awards, and those who sell 78 boxes will be presented with a yellow tote bag inscribed with the words, "Girl Scouts Are Smart Cookies."

## Special Service Slated Sunday At Baptist Church

A special evening service to promote the ministry of Huron Valley Youth for Christ will be conducted Sunday, Feb. 5, at Chelsea Baptist church, 337 Wilkenson St., according to the Rev. James Stacey, pastor of the parish.

Guest speaker for the service will be Duane Cuthbertson, director of HVCYC and manager of WYFC, an Ypsilanti broadcasting station. Cuthbertson is also extensively involved in family life conferences, and marriage and family counseling.

Also on the program Sunday evening is "New Jerusalem," a group of six gospel musicians from the area who will seek to administer to others through music. The group will be singing, playing and sharing testimonies.

The evening service will begin at 6:30 p.m. and is open to the public. No admission will be charged, but a free-will offering will be taken.

The Chelsea Standard, Thursday, February 2, 1978

## CHELSEA VILLAGE COUNCIL PROCEEDINGS

January 17, 1978

Regular Session.  
The meeting was called to order at 7:30 p.m. by President Wood.

Present: President Wood, Administrator Weber, Clerk Neumeyer.

Trustees Present: Brown, Chriswell, Patrick, Schaeffer, Schardein, Sweet.

The minutes of the January 3, 1978 meeting were read and approved.

There was further discussion of parking for the office of the Secretary of State.

Chief Meranuck was instructed to write a letter to I.P.S.C.O. requesting the placement of a STOP sign at the junction of Cavanaugh Lake Road and the IPSCO driveway.

Motion by Patrick, supported by Sweet, to issue a call for caucus to be held Monday, February 13, 1978 at 8:00 p.m. in the Council Chambers. Roll call: Yeas all. Motion carried.

President Wood appointed Trustees Chriswell and Sweet to serve as inspectors of the Village Caucus to be held February 13, 1978. A letter was read from Council explaining the cost for removing the signal at the Freer Road crossing.

A letter from Finkbeiner, Pettis and Strout, Consulting Engineers to the Dept. of Natural Resources detailing information from the Inflow and Infiltration Study was received.

Various committee reports were given.

## TOUGH OF GLASS

A Style for Any Occasion!  
1196 M-52  
Phone 475-1591

Open Tues. thru Fri. 9 to 4  
Saturday 9 to 2  
Evening hours by appt. only

Men's & Women's Cuts & Styles  
Senior Citizen Discounts every day.

Motion was Schardein, supported by Schaeffer, to purchase an NCR machine for the Electric & Water office in the amount of \$4,448.25, funds to come from the Electric Fund. Roll call: Yeas all. Motion carried.

Motion by Chriswell, supported by Brown, to repair damaged loader. Roll call: Yeas all. Motion carried.

An Electric Utility Report from Cummins and Barnard was received.

Motion by Schardein, supported by Patrick, to appoint R. A. Steger and Co. to perform the audit on various village funds for the fiscal period ending February 28, 1978. Roll call: Yeas all. Motion carried.

Motion by Brown, supported by Sweet, to pay bills as submitted. Roll call: Yeas all. Motion carried.

Motion by Chriswell, supported by Patrick, to adjourn. Roll call: Yeas all. Motion carried.

Meeting adjourned.  
Thomas J. Neumeyer,  
Village Clerk.

## HAMBURGER IS KING

The hamburger is the king of fast food restaurant orders. Chicken is in second place; pizza third and fish fourth.

## GOSO Carpet Cleaning

Happy Valentine's Day! Here's a wet weather suggestion for cleaning. We recommend Host, the new method of cleaning carpets without water. The carpet is dry and ready to walk on immediately. Use our Host Electric Up-Brush. It's easy. Clean 40 sq. yds. only \$9.95. Phone for information.

## MERKEL BROTHERS

## RICARDO'S HAIR STYLING

107 N. Main, Chelsea

OPEN MONDAY THROUGH SATURDAY

475-1671

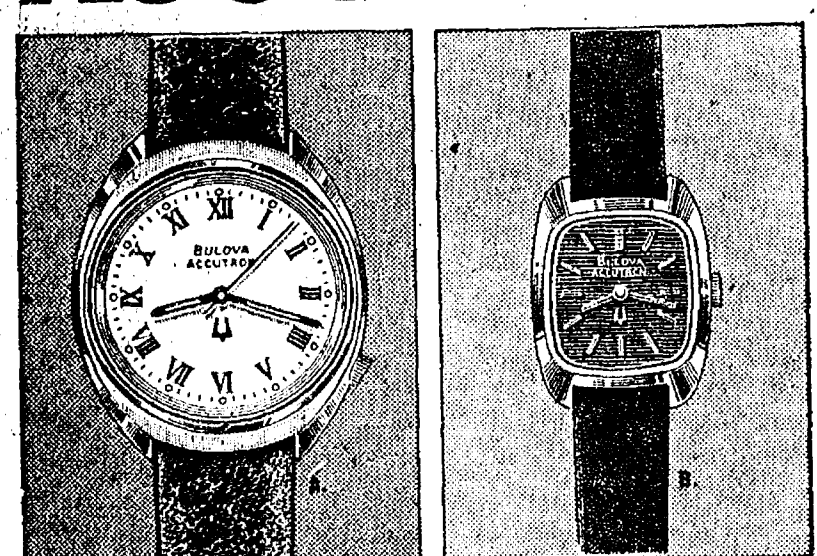
## CAROL'S CUTS

328 Wilkinson

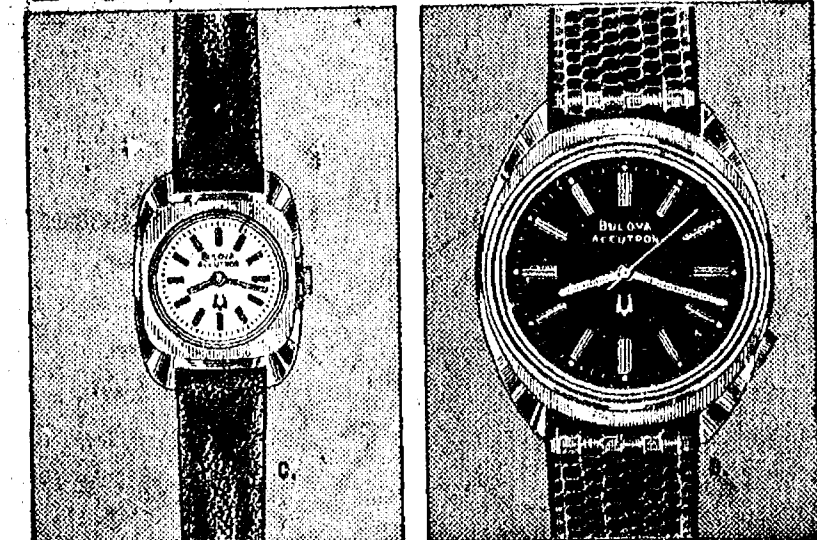
CAREFREE STYLES  
Open Mon., Wed., Fri.

475-7094  
Appts. Only

## BULOVA ACCUTRON®



YOUR CHOICE: \$75.



Until now, for \$75.00 you could afford only an ordinary watch. Now, for \$75.00, you can afford Bulova Accutron, the time-tested electronic watch that never needs winding.

And you have a choice of styles. For men and women. Select yours today.

- A. Stainless steel, White enamel dial, \$75.00
- B. Silver-tone finish, Blue dial and strap, \$75.00
- C. Silver-tone finish, Silver dial, Black strap, \$75.00
- D. Stainless steel, Blue dial, Black strap, \$75.00

## WINANS JEWELRY

## mid-winter furniture and carpet

# SALE

## 10% to 50% off

everything in stock included

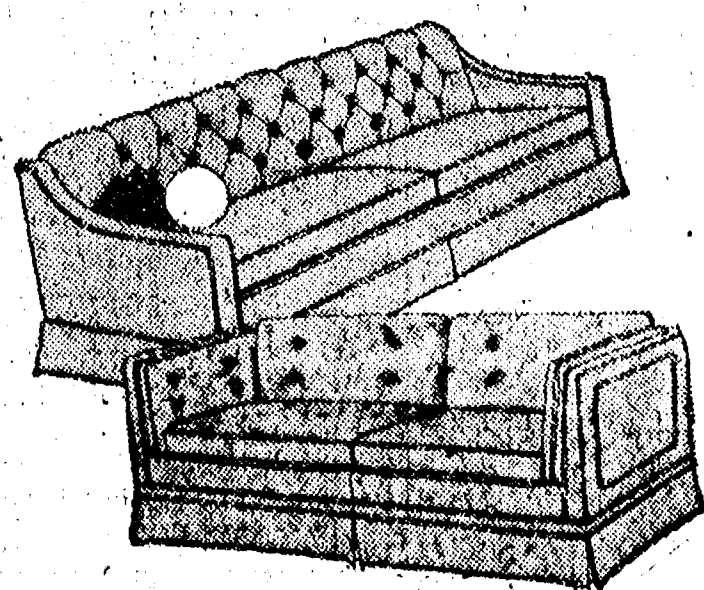
save 25% on LA-Z-BOY recliners

save 10% to 30% on LEES carpeting

save 20% on sleep sofas, HENREDON upholstery

save 15% on accent furniture, STIFFEL lamps

save 15% on upholstery and furniture special orders



## MERKEL FURNITURE AND CARPETS

CHELSEA: MAIN ST., OPEN MONDAY, FRIDAY EVENINGS UNTIL 9 P. M., PHONE 475-8621. MASTER CHARGE, VISA, BANKAMERICARD ACCEPTED.



# Safety Tips Given for Toboggan, Sled Fun

As soon as Michigan's snow arrives, outdoor enthusiasts head for the hills to enjoy a challenge a-toboggan or sled.

Here is a list of "safety tips" concerning the use of toboggans or sleds, according to Chief Park Ranger Robert C. Skellenger, of Kensington Metropark near Milford.

The four basic facts concerning safety are outlined as follows:

1. Know the area you are using:  
—Check for hidden hazards. Snow may hide logs, stumps, stones or fences.  
—Check snow condition before taking your first ride. Frozen snow and ice can cut like broken glass.  
—Do not go down any hill when you cannot see the entire length of the hill.  
—Do not use areas or hills where there are bumps or drop-off areas.  
—Read and obey posted rules and signs.
2. Use proper equipment:  
—Wear warm clothing and foot-wear.  
—Protect your face and hands with ear muffs, gloves and a scarf.  
—Have a good toboggan pad securely attached to the toboggan at all times.  
—Check your toboggan for broken or cracked boards after each run. Do not use broken equipment.
3. Use equipment properly:  
—A toboggan is very hard to steer, especially on "hard-packed" snow.  
—Do not overbraid toboggans or sleds.  
—Be sure to keep your arms and legs inside the toboggan or sled. Hold tightly to side ropes and hold the legs of the person behind you under your arms and do not let go.
4. Use area safely:  
—Do not use sleds and toboggans on the same runs. Sleds cut into and make it difficult to keep toboggans running smoothly. Toboggans pack snow and make it difficult to steer sleds.  
—In heavy use areas, allow the group ahead of you sufficient time to get out of the way before starting downhill. Remember, you don't have any method of stopping once you start your ride downhill.  
—Use marked returns. Do not walk up the hill where others are sledding. Get out of the way as soon as you stop. Be alert for other groups coming down the hill after you.

These safety tips apply to persons tobogganing or sledding anywhere in Michigan Metroparks that offer sledding and tobogganing areas. Stony Creek Metropark near Utica-Rochester (phone 781-2422), Kensington Metropark near Milford (phone 685-1561), and Willow Metropark near New Boston (phone 697-9181).

Stony Creek and Willow Metroparks have hills for tobogganing and sledding, while Kensington Metropark has specially developed hills for tobogganing as well as hills for sleds, with public use depending upon weather conditions. Persons are advised to contact the Metropark of their choice prior to planning a trip for a winter sports outing.



ONE-WAY PASSAGE: Compact cars like this Capri were dwarfed by snow drifts, some reportedly as high as 15 feet in the wake of last week-end's blizzard. County road maintenance crews were able to break through the drifts with heavy plows to allow tunnel-like passage for cars but in the process added many more tons of snow to roadside snowbanks.

## District Court Proceedings

**Week of Jan. 24-30**

Richard K. Schiavetta was sentenced to pay fines and costs of \$250 and referred to the Alcohol Safety Action Program on charges of impaired driving.

Paul Cox pled guilty to charges of speeding. Fines and costs, \$40.

Charles Smith pled guilty to charges of drunk and disorderly. Fines and costs, \$50.

Mark Nortley pled guilty to charges of speeding, transporting open intoxicants, and driving without proof of registration. Fines and costs, \$80.

Mark Masterka pled guilty to charges of illegal possession of open intoxicants. Fines and costs, \$35.

Mark Masterka pled guilty to charges of failing to stop and identify at the scene of a property damage accident. He will be sentenced Feb. 28.

Sharon Bondy pled guilty to charges of speeding and driving with license suspended. She was sentenced to pay fines and costs of \$100 and to three days in jail, or to 30 days in jail.

Brad Estes pled guilty to charges of speeding and transporting open intoxicants. He was sentenced to pay fines and costs of \$85 and to three days on the Washtenaw County Sheriff's Department work program.

Nelson Maldonado pled guilty to reduced charges of impaired driving. Fines and costs, \$250.

Jack H. McDorman pled guilty to charges of speeding. Fines and costs, \$25.

Matthew Clampt pled guilty to reduced charges of impaired driving. He was sentenced to pay fines and costs of \$200, to the Alcohol Safety Action Program, to one year probation, to 10 days on the Washtenaw County Sheriff's Department work program, and was ordered not to drive.

Mary E. Anderson pled guilty to charges of impaired driving. Fines and costs, \$250.

William L. Noveskey was found guilty on charges of speeding. Fines and costs, \$32.

Russell Brink was found guilty on charges of failing to yield the right of way. He will be sentenced Feb. 28.

Mary E. Anderson was found guilty on charges of speeding. Fines and costs, \$33.

Paul Squire pled guilty to charges of speeding. Fines and costs, \$32.

Thomas Miskens pled guilty to charges of driving with vision obscured. Fines and costs, \$15.

Byron Naebach was sentenced to pay fines and costs of \$250 and referred to the Alcohol Safety Action Program on charges of failing to change an improper address on his operator's license and impaired driving.

Sharon Geiger pled guilty to charges of parking illegally in a handicapped zone. Fines and costs, \$25.

Dennis School was sentenced to pay fines and costs of \$75 on charges of careless driving.

Charles Nichol pled guilty to charges of failing to yield the right of way. Fines and costs, \$35.

Hollis Knickerbocker pled guilty to charges of impeding traffic. He was sentenced to pay fines and costs of \$75 and to three days on the Michigan Police Department work program.

Hollis Knickerbocker pled guilty to charges of possession of open intoxicants on a public street. Fines and costs, \$35.

Karen Sue Loon pled guilty to charges of possession of open intoxicants in a motor vehicle. She was sentenced to pay fines and costs of \$35, and to three days on the Chelsea Police Department work program.

Peggy Rohrbach pled guilty to charges of possession of open intoxicants in a motor vehicle. She was sentenced to pay fines and costs of \$35, and to three days on the Chelsea Police Department work program.

Calvin Hester pled guilty to charges of speeding. Fines and costs, \$25.

Michael J. Olejniczak was sentenced to pay fines and costs of \$250 and to six months probation on charges of driving under the influence of liquor.

Diane M. Neill was found guilty on charges of speeding. Fines and costs, \$25.

Patrick J. Burgett pled guilty to reduced charges of reckless driving. Fines and costs, \$125.



EAT YOUR HEART OUT: Scenes like the one above, of Hawaii's white sands and waving palms, will be included in Saturday's travelogue presentation on the Hawaiian Islands to be narrated by Dennis Cooper. Somehow, Chelsea's own white snow, and the palm waving of area residents striving to keep warm, just doesn't compare. The travelogue is the fourth of six being shown as part of the Kiwanis Club's 17th annual Travel and Adventure Series. It will begin 8 p.m. in the Chelsea High school auditorium.

## Aquatic Club Defeats Willow Run, 397-280

Chelsea Aquatic Club, which finished its last season with a 4-1 record and a league championship title, began the current season Monday, Jan. 23 with a sweep, 397-280 win over Willow Run.

Chelsea's specialty in the meet was the breaststroke as numerous local swimmers placed in the event.

For 8 and under boys, John Cattell finished first with a time of 23.3, David Karns placed third, Jeff Mason placed fourth, and Bobby Rawson placed sixth. For 8 and under girls, Jenny Pichlik finished first with a time of 28.5. In the 25-yard breaststroke event, Cindy Stirling placed second, Jane McElroy placed third, and Dawn Weatherwax placed fourth.

In the 9 and 10 boys age group, Mark Henson finished first with a time of 44.7 in the 50-yard breaststroke, Phil Sweet placed second, Mike Carrigan placed third, and Scott Burkhalter placed fourth.

For the 9 and 10 girls age group, Melanie Gunn finished second, Jennifer Cattell placed fifth, Beth Fahy placed sixth, and Paula Kuzon placed seventh.

For the 11 and 12 boys age group, John Hoffman finished first with a time of 49.2, Jerry Hammerschmidt placed second, Ted Merkel placed third, and Steve Rudd placed fourth.

For the 11 and 12 girls, Margie Rawson finished first with a time of 40.3, Susan Gunn placed second, Tanya Mattoff placed third, and Tina LaRoche placed sixth.

The 13 and 14 girls 50-yard breaststroke was won by Shannon Springer with a time of 41.0. Teresa Degener placed second, Michelle Alexander placed third, and Sara Borders placed fourth.

Chelsea swimmers also did a fine job in relay events.

In the 100-yard medley relay for the 8 and under boys, Karns, Cattell, Mason and Scott Landrum took first place. For the 8 and under girls medley, the "A" relay team of Trisha Mattoff, Pichlik, McElroy, and Cathy Hoffman finished first. The B relay with Sharon Colombo, Susan Schunk, Sallie Wilson, and Weatherwax placed second, and the C relay with Kim Degener, Stirling, Annette Duhamel, and Charma Streef placed third.

The 9 and 10 boys medley relay was won by Burkhalter, Henson, Sweet, and Carrigan, while the B relay with Paul Robbins, Tony Hammerschmidt, Terry Karns, and Ricky Proctor placed second.

The 9 and 10 girls A medley relay finished second with Paula Colombo, Gunn, Cattell, and Fahy. The B relay team with Shelly Boham, Kuzon, Kris Mattoff, and Nichole Haller followed in third place, and the C relay team with Kelly Fletcher, Jennifer Colvin, Christine Hegadorn and Missy Connell placed fourth.

The 11 and 12 boys medley relay placed first with Hoffman, Merkel, Kevin Colombo and Jeff Morgan. The 11 and 12 girls medley also placed first with Mattoff, Rawson, Gunn, and LaRoche.

The 13 and 14 girls relay with Alexander, Degener, Borders, and Springer finished first.

The 8 and under boys 100-yard freestyle relay team finished second with Landrum, Rawson, Karns and Cattell. The 8 and under girls "A" freestyle relay team finished first with Hoffman, McElroy, Pichlik, and Stirling, and the B relay team with Weatherwax, Mattoff, Schunk, and Duhamel finished second.

The 9 and 10 boys "A" freestyle relay team with Hammerschmidt, Morgan, Colombo, and Hoffman finished first. The B relay team placed second with Karns, Proctor, Hammerschmidt and Robbins.

The 9 and 10 girls "A" relay team finished second with Fahy, Mattoff, Gunn, and Colombo. The B relay team with Haller, Hegadorn, Kuzon, and Cattell placed third, and the C relay team with Boham, Connell, Fletcher, and Colvin placed fourth.

The 11 and 12 boys 200-yard freestyle relay team finished first with Hammerschmidt, Morgan, Colombo, and Hoffman. The team of Merkel, Tom McElroy, and Steve Rudd swam exhibition.

The 11 and 12 girls 200-yard freestyle relay team with Gunn, Karen Wilson, Mattoff and Rawson placed first as did the 13 and 14 girls team of Degener, Alexander, Borders, and Springer.

## March of Dimes Volunteers Needed

Is volunteering for the March of Dimes Mothers March on your list of resolutions for 1978? If not, it should be. The Chelsea March of Dimes needs you.

And so do thousands of babies who come into the world and have to fight to survive. Many of them don't make it. Others are too small to breathe on their own, too weak even to cry, or have hearts too tiny to function correctly.

"The March of Dimes is working to help these babies—to protect the unborn and the newborn," said Pam McCombs, area March of Dimes co-ordinator.

"The campaign supports numerous medical services which make early diagnosis of high-risk pregnancies available. It also provides for intensive care nurseries for critically ill newborns."

Funds raised during the Chelsea Mothers March will be used to support these services and research, public health education, and community service programs, Mrs. McCombs explained.

Currently, a March of Dimes chairman is needed in the Chelsea area to work with lieutenants Mary Jo Miller, Sherri Plank, Becky Schoenberg and Carol Slater in the village, and lieutenant Erma O'Conner in Dexter township.

In addition to these five volunteers, two more lieutenants are being sought to conduct canvassing efforts in Chelsea, in Dexter township, and in Lima township. Three are needed in both Lyndon and Sylvan townships.

Volunteer today to help insure a healthy start in life for the children of tomorrow.

Be a marching mother. Call 701-6331.

## Michigan's Traffic Death Toll Decreases

For the fourth year in succession, Michigan had an annual traffic death toll below 2,000 as State Police figures this week show the provisional count for 1977 to be 1,904, Col. Gerald L. Hough, department director, reported.

In the previous three years, the Michigan annual tolls were 1,955 in 1976, 1,811 in 1975, and 1,875 in 1974. The state's all-time high of 2,487 occurred in 1969 and was part of a 10-year span, 1964-73, in which all the yearly traffic death tolls were above 2,000.

The 1977 loss was 51 or about 2 1/2 percent less than the count in the previous year. Traffic officers point out that the 1977 toll will likely increase by one or two percent when records for the year are completed.

Traffic officers feel that several factors again share in the credit for the below-2,000 toll last year. These would include the lowered national speed limit, a slower paced economy in some sectors, some labor unrest and its effect on employment and transportation, concerns about costs of motor vehicle operations, and the on-going efforts of police and other agencies in the traffic safety field.

Contributing to the lower annual toll last year for Michigan was a lower death count in December. Provisionally December had 129 deaths, which were 33 or about 20 percent less than the count of 162 recorded for that month in 1976. There were six other months that showed reductions in deaths compared with their corresponding periods in 1976.

The average for December was 150 in the five-year period 1972-76. High for the month was 245 in 1965 while the low was 79 in wartime 1942.

### Keith Turner Granted Pfc. Stripe With Unit in Germany

Keith Turner, son of Mr. and Mrs. George Turner, 4331 Bragan Rd., Stockbridge, recently was promoted to Army private first class while serving as a mechanic with the 27th Field Artillery in Friedberg, Germany.

Pfc. Turner entered the Army in October 1976. He is a graduate of Stockbridge High school.

### CURTIS MATHES COLOR TV

America's most expensive TV sets... but not this week at LOY'S TV.

4-yr. parts warranty  
4-yr. picture tube warranty  
4-yr. chassis labor.

TOUCH TUNING  
REMOTE CONTROL  
COMBINATION COLOR TV  
Also Black & Whites  
WE TAKE TRADES

**LOY'S TV**  
512 N. Maple Rd., Ann Arbor  
Phone 769-4469  
Welcome. Bank Financing.  
Master Charge & BankAmericard

### Tonight and Every Thursday THE CAPTAINS TABLE ROAST BEEF BUFFET



"Curved Before Your Eyes"  
Serving from 4:30-9:30 p.m.

The Captains Table - 8093 Main St., Dexter

## McCalla Feed Service

Phone 475-8153  
12875 Old US-12 E. Chelsea

**WAYNE DOG FOOD  
WAYNE CAT FOOD  
WATER SOFTENER SALT  
BIRD FEEDS  
SUNFLOWER SEEDS  
HORSE FEEDS  
RABBIT FEED**

Bird Houses - Dog Houses

**DIETERS-**  
Miss those crunchy snacks?  
WE HAVE:  
Crisp Breads ..... 31 calories  
Rice Cakes ..... 23 calories  
Low fat yogurt.

**RIVENDALL NATURAL FOODS**  
3212 Alpine, Dexter Ph. 426-2549

**Carl's Cleaning Service**  
521 S. Main St. Chelsea, Mich.  
Professional Carpet & Upholstery Cleaning  
BUSINESS - RESIDENTIAL  
FREE ESTIMATES Phone 475-8007

**LAST DAY OF REGISTRATION School Election**

Notice of Last Day of Registration of the Electors of  
**Chelsea School District**  
Washtenaw and Jackson Counties, Michigan

**TO THE ELECTORS OF SAID SCHOOL DISTRICT:**  
Please Take Notice that the Board of Education of Chelsea School District, Washtenaw and Jackson Counties, Michigan, has called a special election to be held in the School District on  
**Monday, March 6, 1978**

The last day on which persons may register with the appropriate township clerks, in order to be eligible to vote at the Special School Election called to be held on Monday, March 6, 1978, is  
**MONDAY, FEB. 6, 1978**

Persons registering after 5:00 o'clock p.m., on Monday, February 6, 1978, are NOT ELIGIBLE to vote at said Special School Election.

Persons planning to register with the respective city or township clerks must ascertain the days and hours on which the clerks' offices are open for registration.

This Notice is given by order of the Board of Education of Chelsea School District, Washtenaw and Jackson Counties, Michigan.

**ROBERT N. SCHAFER**  
Secretary, Board of Education

Dated: Jan. 19, 1978.

**"The new tax forms.**  
**A good reason to let us help with your taxes."**

At H&R Block, we understand these new forms, we know the laws. We'll do everything we can to save you money. And that's Reason No. 1 why you should let H&R Block do your taxes.

**H&R BLOCK**  
THE INCOME TAX PEOPLE

105 S. MAIN ST., CHELSEA Ph. 475-2752  
Our offices are open 9 a.m. to 6 p.m.

**KEN OSBORNE INSULATION CONTRACTOR**

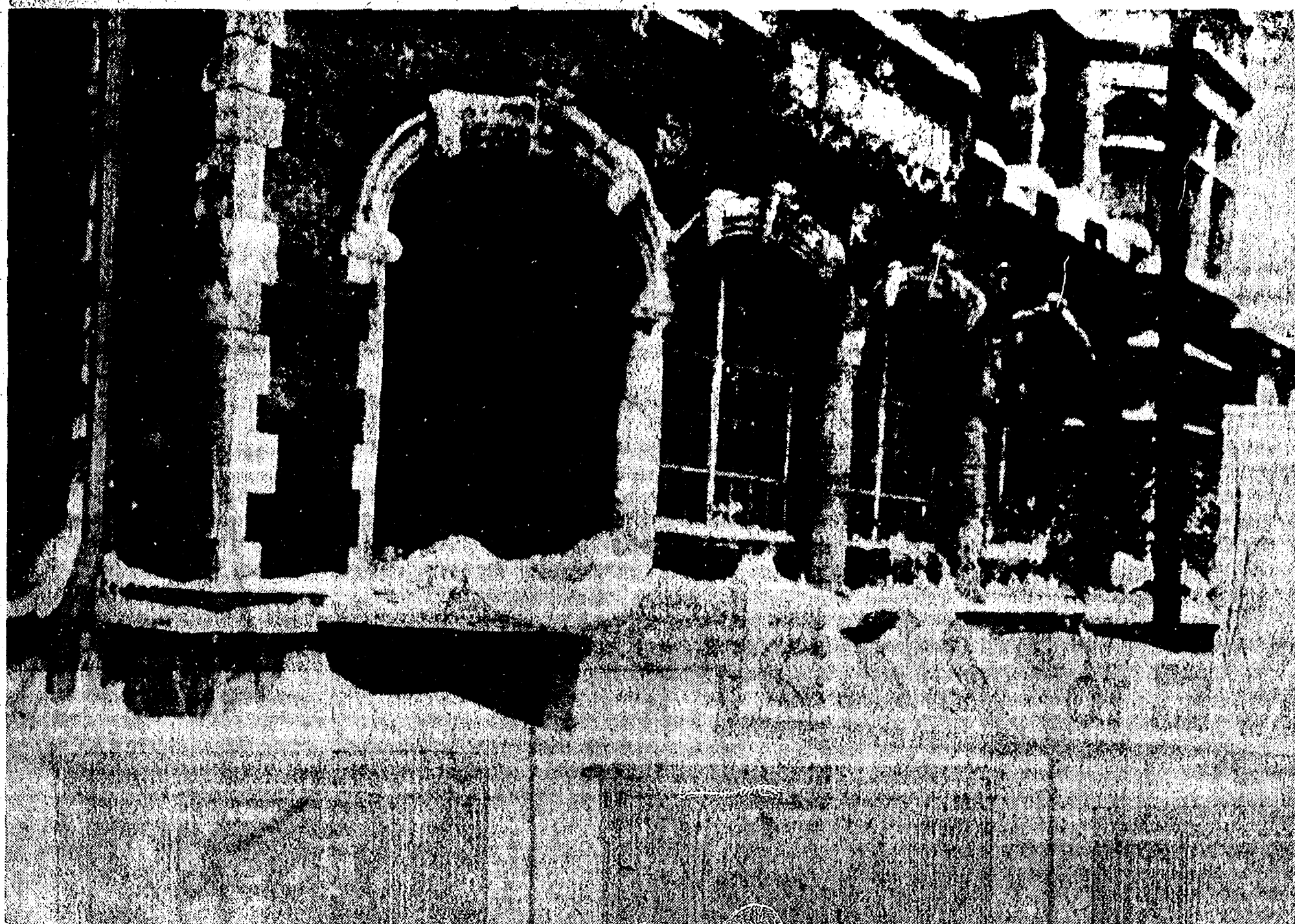
★ Blown in side walls and attic.  
★ R = 4.17 per inch.  
★ Resists fire and moisture.  
★ Lightweight.  
★ Meets Federal Specification HH-1-515.  
★ This insulation made from 100% wood fibres.

KEEP COOL & SAVE FUEL. DON'T WAIT TOO LONG. IT'LL COST MORE LATER.

35 years in the building and insulation business in this area.  
FREE ESTIMATES

**KEN OSBORNE**  
Ph. (517) 851-7497  
ALUMINUM STORM WINDOWS AND DOORS





A FOUR-FOOT DRIFT made entrance to The Chelsea Standard building difficult last week-end, but some heavy soul was able to cut a narrow path through the drift to deliver a bowling score at

the peak of the blizzard. Workers at The Standard have continued using the path, widening it bit by bit each day.

## Boy Scouts Prepare For 68th Anniversary

February marks the 68th anniversary of Boy Scouts of America and the 48th birthday of the Cub Scout program.

During this month, area scouts will have several opportunities to make the public aware of their organization.

Special events will begin Feb. 4 with store window displays. Pack 455 will display scout projects in the Pontiac showroom window on W. Middle St. Be sure to check other downtown windows for more scout displays.

Uniform Day is Feb. 8, the founding day of the scout program. Scouts throughout the United States will proudly wear their uniforms that day.

Scout Sabbath, Feb. 11, and

Scout Sunday, Feb. 12, will find all churches filled with uniformed scouts and their families worshipping together.

Blue and Gold banquets will also be scheduled this month. Pack 455 will be honoring hard-working Cub Scouts at their Blue and Gold Awards Banquet, Feb. 23.

Finally, rededication should both launch and cap celebrations during the month. As a group, the scout promise will be recited reminding each boy of the principles scouts strive for each day.

This month, when area residents see a scout they are asked to congratulate him on belonging to the organization and to wish him a "Happy Anniversary" or "Happy Birthday," whichever the case may be.

## School Financing Will Be Discussed

Proving again that sometimes a small fish can make a big splash, a resident of the Chelsea School District has succeeded in rounding up several Michigan legislators who have agreed to participate in a public discussion on school financing in Chelsea Feb. 14.

The discussion will come at an opportune time as voters in the Chelsea School District are scheduled to go to the polls March 6 to determine the fate of the Board of Education's request for a three-year renewal of the .33-mill tax increase for school operating costs passed last August.

Gale DeSmyther, the resident responsible for arranging the discussion, made initial headway towards that end last year while questioning the practice of increasing school taxes to balance the operating budget of a school district.

After writing a letter to Governor William G. Milliken expressing concern over the way schools are financed, DeSmyther was referred to Douglas J. Smith, special assistant to the governor. DeSmyther contacted Smith and broached the idea of conducting a meeting in Chelsea which would allow citizens of the area to ques-

tion elected state officials about the school tax structure.

Smith has since consented to participate in such a meeting and has been joined by State Representative Mike Conlin (R-23rd District) and Roy Smith (R-52nd District), as well as Tom Bernthal from the office of State Senator Gilbert Bursley (R-18th District).

All are scheduled to appear Feb. 14, 7:30 p.m. in the Chelsea High school cafeteria to answer pre-submitted questions on school financing.

Use of the cafeteria is being provided by Chelsea Schools Superintendent Charles Cameron, while Chelsea School Board President Robert Daniels has agreed to moderate the discussion. Persons interested in more information about the meeting, or those wishing to submit questions should contact DeSmyther at 475-7873.

## Swim & Trim Deadline Is Extended

Because of snow, the registration deadline for Ladies Swim & Trim classes at the Beach Middle school pool has been postponed to Feb. 9, according to pool director Larry Reed.

However, classes will begin today, Feb. 2, 8 p.m. Registration will also be conducted at this time.

All classes will last 1½ hours with physical exercises from 8 p.m. to 8:45 p.m. in the Beach school exercise room, and organized pool activities and recreational swimming from 8:45 p.m. to 9:15 p.m.

Classes will continue weekly on Thursdays through March 30. The registration fee is \$15.

For further information, call Laurie Von Hofe at the Beach school pool, 475-1425, between 2:30 and 5 p.m.

Telephone Your Club News To 475-1371.

## Famed Educator, Chelsea Native, Dies in Pennsylvania

Dr. Carroll D. Champlin, 91, who retired in 1953 as professor emeritus of education at Pennsylvania State University, died Monday, Jan. 23, at Parkwest Manor, State College, Pa.

A native of Chelsea, Dr. Champlin was a graduate of Bloomsburg High school, Bloomsburg, Pa. He was graduated in 1906 from Bloomsburg State College where he was honored in 1951 as a Distinguished Alumnus. He received his Bachelor of Arts and Master of Arts degrees in 1914 and 1915 from Haverford College, and his Doctor of Philosophy degree in 1925 from the University of Pittsburgh.

Dr. Champlin began his career in education in 1906 as a teacher in the public schools of Pennsylvania and in 1919 was appointed an instructor at the University of Pittsburgh. Two years later he was named professor of education at California State College and in 1926 was named to the Penn State faculty.

In 1932, Dr. Champlin went to the University of Puerto Rico for a year as an exchange professor, returning there in 1934, after his retirement, for an 18-month appointment. He also taught at the University of Hawaii.

He was a visiting professor in 1960-61 at the University of Utah, and had served on the faculty of various institutions for summer programs.

Dr. Champlin traveled extensively in South America, Europe, including the Soviet Union, and in

Africa and the Near East. He interviewed many leading statesmen and educators. He was widely known as a lecturer, having made more than 2,200 appearances, and as the author of many articles and book reviews in the fields of history and philosophy of education.

Dr. Champlin was active in Kiwanis and the Methodist Church, and in 1966, he and Mrs. Champlin were official delegates to the World Methodist Conference in England.

He was a member of Phi Delta Kappa, professional education society; Pi Gamma Mu, social science honor society; Kappa Delta Pi and Kappa Phi Kappa, both education societies; and Alpha Chi Rho, social fraternity.

Born Oct. 22, 1886, Dr. Champlin was the son of Henry W. and Della Sherwood Champlin.

Survivors include his widow, the former Dorothy Gage; a daughter, Carolyn K. van der Linden, of Maui, Hawaii; and two granddaughters.

Arrangements for funeral services were made by Koch Funeral Home, State College, Pa.

Enrollments in programs under the Comprehensive Employment and Training Act (CETA) totaled 1,444,200 during the first half of fiscal year 1977, according to the U. S. Labor Department. About half of the participants—737,300—were new enrollees.

**Thinking CARPET?**  
**Think SCHNEIDER'S**

Visit the wonderful world of carpeting at Schneider's, one of the area's finest, full-service carpet stores, conveniently located in West Ann Arbor on Wagner Road between Jackson and Liberty.

Schneider's carries a broad selection of quality, name-brand carpets at prices consistently among the lowest in the entire area. Try us.

**662-9332**

OPEN MON & FRI NIGHTS TIL 8:00 PM

**SCHNEIDER CARPET CO., INC.**

743 S. WAGNER RD. ANN ARBOR

**FEED FOR PROFIT**

Feed Formulas Tested, Proved To Get Results

Extra proteins, vitamins and minerals in proper balance, scientifically blended, make our feeds real profit producers for you.

**Farmers' Supply Co.**

Phone GR 5-5511

# Jiffy market

Big Enough To

Serve You . . . Small Enough To Know You!

Full Line Supermarket  
BEER - WINE - LIQUOR  
AUTHORIZED  
FOOD STAMP STORE  
MARATHON GAS PUMPS  
MEAT DEPT.  
U.S.D.A. CHOICE BEEF

**CHELSEA'S  
ONE - STOP MARKET**  
- FEATURING -  
**U.S.D.A. CHOICE BEEF**

Open 7 Days A Week  
7 a.m. to 10 p.m.  
Corner Sibley & Workner Rds.  
PHONE 475-1701

Sale Prices Effective Thurs.,  
Thurs., Feb. 2 thru Sun., Feb. 5

TOP VALUE FOODS - GUARANTEED SATISFACTION - COURTEOUS SERVICE

**U.S.D.A. CHOICE BEEF CHUCK ROAST**  
**BLADE CUT** . . . . . lb **79¢**  
**CENTER CUT** . . . . . lb **89¢**  
**ARM CUT** . . . . . lb **\$1.19**  
**ENGLISH CUT** . . . . . lb **\$1.19**

RE-PEAT-ER — FROM FARMER PEET

**SLICED BACON** . . . . . lb **\$1.29**

HAMBURGER MADE FROM

**GROUND CHUCK** . . . . . lb **\$1.09**

HAMBURGER MADE FROM

**GROUND ROUND** . . . . . lb **\$1.19**

AT THE MEAT COUNTER

**COLBY LONGHORN CHEESE** . . . . . Random Weight **\$1.29 lb.**

THE UNCOLA

**SEVEN-UP** . . . . . 16-Oz. No-Return Bottles 8 pac **\$1.69**

CONTINENTAL BAKING COUNTRY STYLE

**WHITE BREAD** . . . . . 1 1/4-Lb. Loaf **39¢**

VAN CAMP

**PORK & BEANS** . . . . . 1-Lb. Cans **29¢**

KRUNCHEE REG. 79¢ - SAVE 20¢ BAG

**POTATO CHIPS** . . . . . 9-Oz. Bag **59¢**

**FARM MAID DAIRY - C HELSEA'S FAVORITE!!**

**EVERY DAY LOW PRICES**

**LOW-FAT MILK** . . . . . Gal. **\$1.09**

**SOUR CREAM** . . . . . 1/2 Pint **39¢**

**COTTAGE CHEESE** . . . . . 1-Lb. Crtn. **59¢**

**CHOCOLATE MILK** . . . . . Quart **39¢**

**HOMOGENIZED MILK** . . . . . Gallon **\$1.39**

**U.S.D.A. Choice Freezer Beef**

SIDES - FRONTS - HINDS - LOINS - FULL RIB  
Cut, Wrapped, Frozen To Your Specifications.

LOCAL FARM BEEF FOR SALE.  
CORN-FED BEEF AT ITS BEST!

Custom Cutting, Grinding, Wrapping and Freezing

**YOUR BEEF**

QUICK SERVICE on HAULING and SLAUGHTERING

**JIFFY MARATHON GAS PUMPS**

REGULAR  
GAS

**59.9**

Includes  
All Taxes

THANK YOU — We Appreciate Your Business!

Gas - Household Supplies - Fresh Meat - Food Stamp Store

Beer - Wine - Liquor

Fresh Produce - Supermarket Groceries

Jiffy Market is Owned and Operated by Chelsea Families.

**JIFFY MARKET**

**A One-Stop Store**



## Community Calendar

Week of Feb. 2-9  
1978

Chelsea Band and Orchestra Boosters, Thursday, Feb. 9, 8 p.m., in the Chelsea High school band room.

Stockbridge American Legion dance, Saturday, Feb. 4, Price Brothers Band, 9 p.m. to 1 a.m. adv34

Western Washtenaw Girl Scout Association, Thursday, Feb. 9, at St. Andrew's United Church of Christ, 7610 Ann Arbor St., Dexter, 7:30 p.m. All adult Girl Scouts and girls over 14 are invited. Bring craft and written instructions. There will also be a talk about money by staff members of Huron Valley Girl Scout Council. Presented by Cadette Troop 156 of Dexter, Mrs. Sandy Armbruster, leader. Note change of date.

Dexter Co-op Nursery's annual plant sale, Saturday, Feb. 11, 9 a.m.-4 p.m. at St. Andrew's United Church of Christ, 7610 Ann Arbor Rd. Most plants around \$1. advx35

Lima Center Extension Group, Wednesday, Feb. 8, 10:30 a.m. at Lima Town Hall. Hostesses, Mrs. Freeman Molsinger and Mrs. Wallace VandenBosch. Lesson: "Cooking on the Front Burner."

Olive Chapter, RAM, No. 140, regular communications, Thursday, Feb. 2, 7:30 p.m.

Inverness Country Club euchre party and pot-luck, Tuesday, Feb. 7, 6:30 p.m., at the clubhouse. Call 475-7687 or 475-1133 for reservations.

Lima Township Board regular meeting the first Monday of the month, 8 p.m., at Lima Township Hall. adv42tf

AA and Al-Anon meeting, Monday evenings at Chelsea Community Hospital, 8:30 p.m. Closed meetings.

Chelsea Senior Citizens meet the third Friday of each month, 6 p.m., at St. Mary's school. Pot-luck, games and cards.

Lyndon Township Planning Commission meets the second Thursday of the month at the Township Hall, 8 p.m. adv42tf

Lima Township Planning Commission regular meeting the third Tuesday of every month, 8 p.m., at the Township Hall. adv42tf

Chelsea Rebekah Lodge No. 130, the first and third Tuesday of every month, 7:30 p.m., at the Temple.

Chelsea Co-op Nursery is now taking applications for the 1977-78 school year. To enroll, call Kay Johanson, 475-7765 or 475-8316. advx43tf

Lions Club, first and third Tuesday of every month, 6:45 p.m. at Chelsea Community Hospital.

Lyndon Township Board regular meetings the third Tuesday of each month, 7 p.m., in Lyndon Town Hall. adv42tf

University of Michigan Nurses Alumni Association, Winter Dinners Dinner and Annual Meeting, Tuesday, Feb. 7, 6 p.m., at the University Club in the Michigan Union, Ann Arbor. Call Nancy Nelson at 761-1651 after 6 p.m. for reservations.

OES meeting, Wednesday, Feb. 8, 7:30 p.m.

OES Past Matrons, pot-luck, Thursday, Feb. 16, 12:30 p.m. at the Masonic Temple.

OES card party, Saturday, Feb. 18, 8 p.m., at the Masonic Temple. Public invited. adv36

Chelsea Christian Men's Fellowship (non-denominational) prayer breakfast, the first Saturday of every month, 8 a.m., in the Chelsea Community Hospital dining room.

Chelsea Community Farm Bureau, Thursday, Feb. 19, at the home of Mr. and Mrs. Carl Heller. Pot-luck supper at 7:15 p.m.

St. Mary Altar Society, Monday, Feb. 6, 7:30 p.m. in the school hall.

Regular meeting of Herbert J. McKune Unit No. 31, American Legion Auxiliary, Tuesday, Feb. 7, St. Mary school, 6:30 p.m. pot-luck. Bring dish to pass and own table service.

Chelsea Child Study Club Tuesday, Feb. 14, 8 p.m., at the home of Wyn Schumann. Wine Tasting Party and Sweetheart Night.

Lantaze childbirth preparation classes. For more information, call 475-9558 or 475-9136. adv 41

American Legion hospital equipment is available by contacting Larry Gaken at 475-7891.

Sharon Township Planning Commission regular meeting third Wednesday of each month. adv42tf

Sylvan Township Board meeting the first Tuesday of the month, at 7 p.m., at Sylvan Township Hall. adv42tf

Sharon Township Board regular meeting first Thursday of each month, 8:30 p.m. adv42tf

## BIRTHS

A daughter, Heather Dove, to Mr. and Mrs. Edwin Greenleaf, 633 S. Main St., Saturday, Jan. 27, at St. Joseph Mercy Hospital, Ann Arbor. Maternal grandparents are Mr. and Mrs. Bill Dove of Eaton Rapids.

A daughter, Noelle Jeanine, to Mr. and Mrs. John Niedermeier of Howell, Friday, Jan. 27, at St. Joseph Mercy Hospital, Ann Arbor. Maternal grandparents are Mr. and Mrs. Joseph Balogh of Chelsea, and paternal grandparents are Mr. and Mrs. Joseph Niedermeier of Cadillac.

## Home Meal Service Needs More Drivers

Chelsea Home Meal Service is again seeking volunteer drivers to deliver hot meals to elderly and handicapped residents within the village area.

Drivers are particularly needed for the Sunday route which consists of 16 meal deliveries. None of the regular Sunday subscribers reside in country areas so all driving is on paved roads.

Families are especially encouraged to volunteer their services, and if enough apply, four families may be assigned to the same route so that each would be required to deliver meals only once per month.

High school age youths are also urged to apply as volunteers, either individually, or in groups, to share a delivery route.

Meals are picked up at 11:15 a.m. every Sunday at the Chelsea United Methodist Retirement Home. The delivery route takes approximately one hour to complete.

All new volunteers are first sent out with an experienced volunteer before assuming their own routes so no previous familiarity with home meal delivery service is needed.

Persons or families interested in volunteering their services for Sunday meal deliveries are asked to call Barbara Branch at 475-7644.

## JV Cagers Post 63-50 Win Over Novi

Shooting out to an eight point lead in the first quarter, Chelsea's junior varsity cagers managed to hold off Novi for three more periods and emerge with a 63-50 win over the Wildcats Friday, Jan. 20.

The victory, Chelsea's third in as many games, raised the Bulldogs' overall record to 10-3 on the season, and their conference record to 6-1.

"It was a close game almost all the way," Chelsea Coach Jon Schaffner said. "Every time we got a 10-point lead, and it looked like we were going to blow the game open, Novi would come back and cut the lead to six or four points."

Bulldog standouts in the contest were Don Schrotenboer with 18 points, 14 rebounds, 4 steals and 3 blocked shots; Jeff Dils with 14 points, 3 steals, 7 assists and 1 blocked shot; Mike Killelea with 12 points, 11 rebounds, 2 steals and 3 assists; and Brad Knickerbocker with 6 points, 4 rebounds, and 2 assists.

Also contributing to the winning cause were Karl Albrecht with 5 points, 5 rebounds and 1 steal; John Dunn with 4 points, 1 rebound, 3 steals and 5 assists; Mike Wood with 2 points, 5 rebounds and 1 assist; Dave Seyfried with 2 points, 3 rebounds and 2 assists; and Brad Flanagan with 1 rebound.

Chelsea shot well at the free throw line, sinking 11 of 15 attempts for 73 percent, but had an off night from the field with only a 36 percent shooting average.

## Lenten Series Scheduled By Methodists

A series of weekly adult study-fellowship classes will highlight the Lenten observance at Chelsea United Methodist church, beginning Thursday, Feb. 16, 7:15 to 9:15 p.m., at the church.

Under the direction of the Rev. Marvin McCallum and Mrs. Marjorie Robbins, worship chairperson, a different topic will be studied at each of the six consecutive weekly sessions.

In order of presentation, the topics will be:

1. Using a Compass—Developing skills in understanding the Bible.
2. Things Not Seen—Interpretations of faith.
3. A New Church for a New Day—Can our Church fulfill its mission?
4. Decisions, Decisions—How Christian discipleship is related to our decisions.
5. Around the Campfire—What is prayer?
6. Undeclared—Life does not end in death.

During February we all think of hearts because of Valentine's Day. But what about your physical heart? If you'd like to know how to keep it healthy, call us. We're the Michigan Heart Association and we're fighting for your life.

**FARLEY CONSTRUCTION**  
522 HOWARD RD.

ADDITIONS • REMODELING  
REPAIRS  
NEW HOMES

475-8265 or 475-7643

The most FAMOUS HOME ENTERTAINMENT SALE of all!

# MAGNAVOX

## Annual Sale

SAVE UP TO \$225



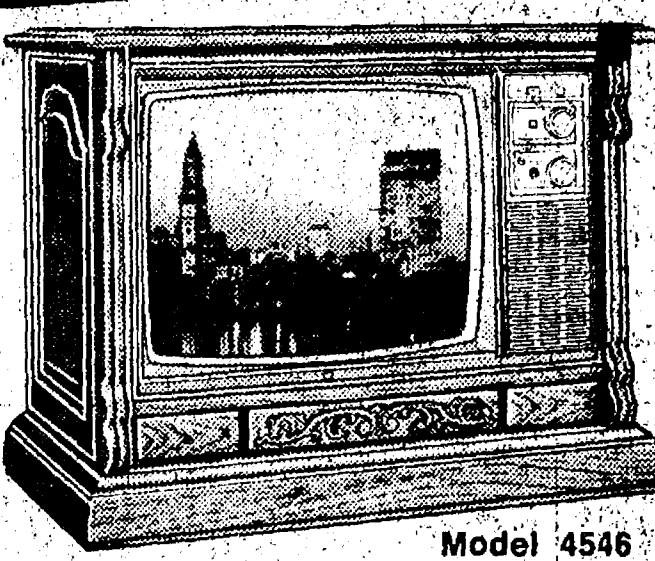
Model 4546

SAVE \$140

STAR SYSTEM TOUCH-TUNE COLOR TABLE MODEL TV

Model 4471 brings you computer sharp, computer fast 19" diagonal color pictures on any channel... at the touch of your finger. Touch-Tune at the set... or by remote control (included).

Now \$639<sup>95</sup>



Model 4666 - Mediterranean styling

SAVE \$110

25" diagonal Console - offers the convenience and automation of the Videomatic one-button tuning system, brilliant color on its Super Bright Matrix Picture Tube and 100% solid-state reliability. Fine furniture styling, too.

Now \$639<sup>95</sup>



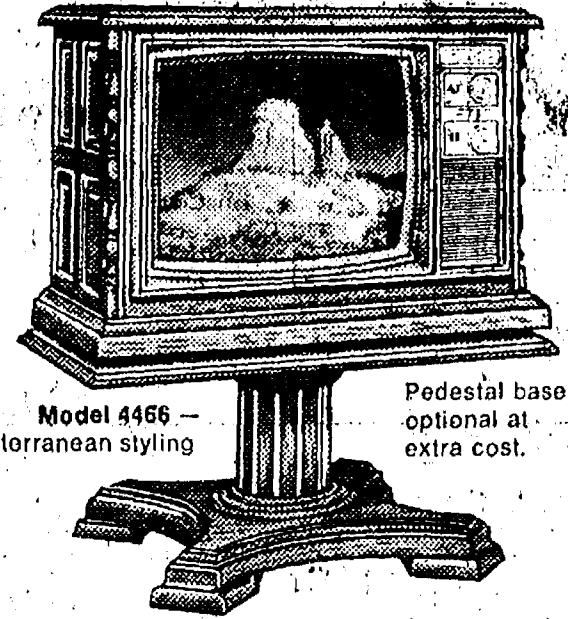
SAVE \$170

VIDEOMATIC TOUCH-TUNE FINE FURNITURE COLOR TV

This outstanding Magnavox brings you a beautiful 25" diagonal color picture at the touch of your finger... electronically. No moving parts to wear out. And you may add the convenience of remote control at time of purchase... or later.

Now \$759<sup>95</sup>

COLOR TV • B/W TV • CONSOLE STEREO • MODULAR STEREO!

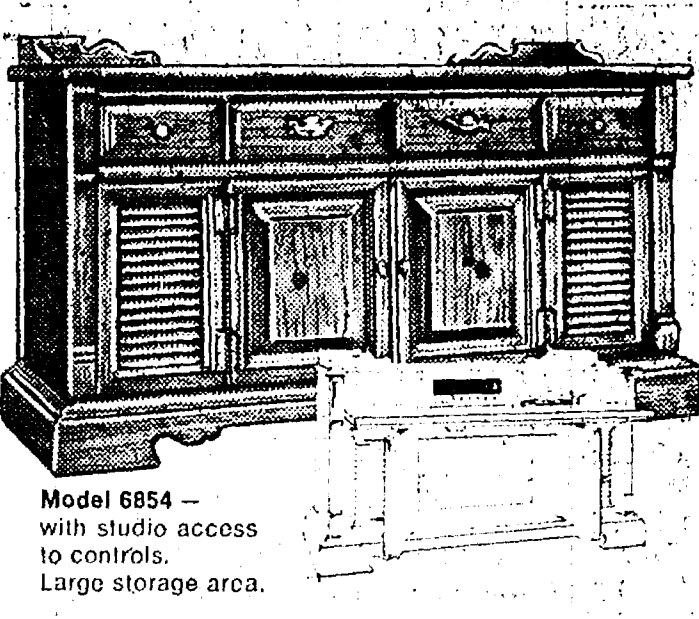


Model 4456 - Pedestal base optional at extra cost.

SAVE \$80

19" diagonal Videomatic Table Model - automatically brings you eye-pleasing pictures in any light... plus brilliant, sharp color on its Precision In-Line Tube. It also has the reliability of a 100% solid-state chassis.

Now \$459<sup>95</sup>

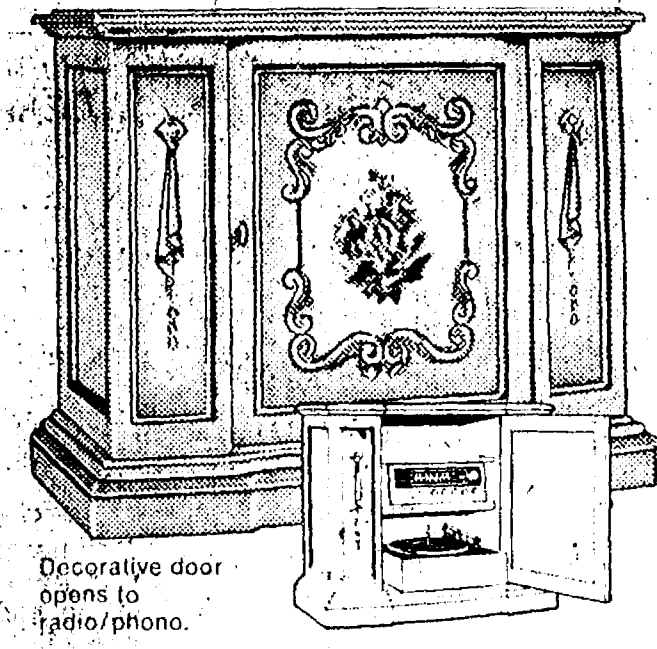


Model 6854 - with studio access to controls. Large storage area.

SAVE \$100

Deluxe Decorator Stereo. Enjoy Dimensional Sound from Stereo FM/AM radio, records or optional tape equipment. Six speakers in a special 3-way speaker system project sound from both sides and front of the finely crafted cabinet.

Now \$599<sup>95</sup>



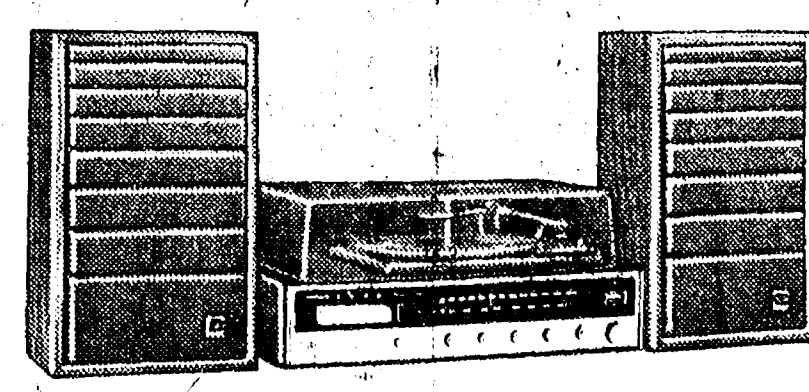
Decorative door opens to radio/phone.

SAVE \$70

The Venetian Decorator Stereo. A combination of exquisite furniture design and audio engineering expertise, model 6560 will delight your eyes... and ears - with the rich, full sound of Stereo FM/AM radio, records or optional tape equipment projected by four speakers.

Now \$429<sup>95</sup>

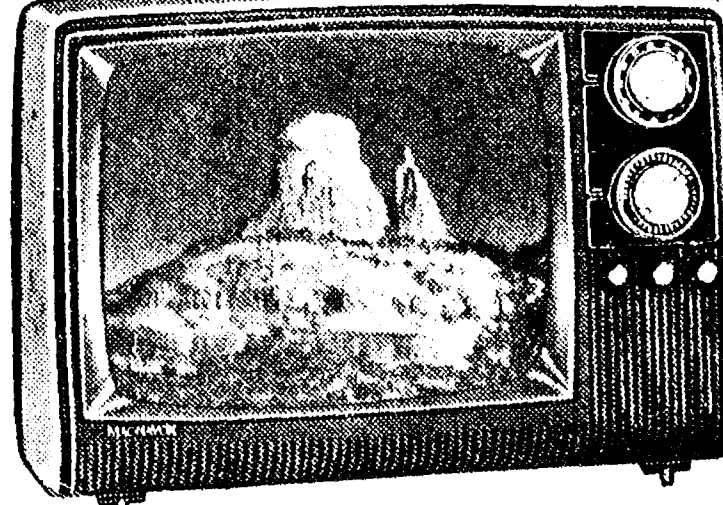
DON'T MISS THIS OPPORTUNITY TO SAVE ON A MAGNAVOX.



SAVE \$20

Great Sound... Small Price. Magnavox modular music system, model 1709, offers you a full-featured stereo FM/AM radio, built-in 8-track player, automatic record changer (with dust cover) and two sealed-back enclosures - each with a fine sounding 6" speaker.

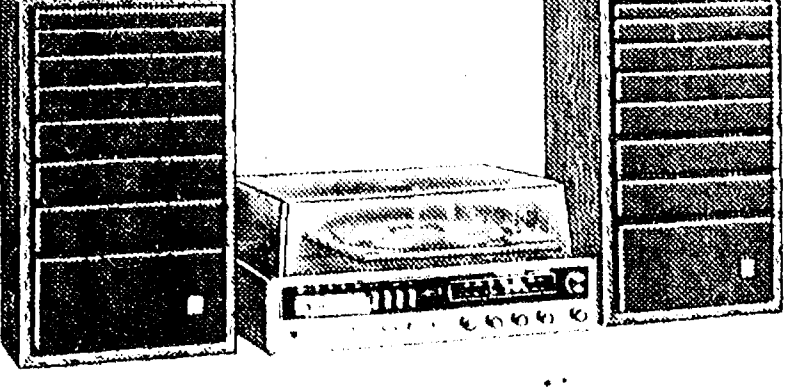
Now \$189<sup>95</sup>



Personal Portable TV - model 5300

SAVE \$10

Now \$99<sup>95</sup>



SAVE \$40

Value Priced Modular Music System. Model 1725 will delight you with its performance features and its low price. Stereo FM/AM tuner/amplifier • built-in 8-track player • recorder • automatic changer (with dust cover) • plus 2-way tuned-vent speakers for rich, full bass.

Now \$259<sup>95</sup>

**HEYDLAUFF'S** 113 North Main Ph. 475-1221

## GO GAMIBLES

110 N. MAIN ST. PH. 475-7472

for RCA COLOR TV



RCA

GB688

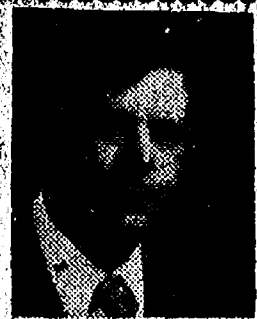
RCA XL-100 Xtented Life Chassis

Designed for high performance and longer life.

NOW ONLY \$569<sup>00</sup>

SHOP NOW & SAVE!





## Real Estate

By PAUL FRISINGER

### THE BEST ADVERTISING

Selling your home? Then your first thought will, no doubt, be advertising it. You may start by planting a "For Sale By Owner" sign in your front lawn. But will this be seen by enough — or any — prospective buyers?

Then — newspaper advertising. This can become more costly and less effective than you think if done improperly. It could even lead to over-exposure of the house to the point where, if you should decide later to consult a Realtor, good prospects already will have seen the property and, having failed to buy, will be harder to interest a second time.

The basic reason for advertising is to attract interested prospects who are ready, willing, and financially able to buy. There's a more effective and faster way. List with a Realtor! He has prospects already in the market for homes realistically priced. One of them may be looking for just such a home as yours.

If there is anything we can do to help you in the field of real estate, please phone or drop in at FRISINGER REALTY CO., 935 S. Main St., Chelsea. Phone: 475-8881; evenings 475-2621. We're here to help!

## Warren 6th Graders Snowbound at Camp

Some 180 sixth-grade students from the Warren Woods School District had their five-day winter nature study program in the Waterloo Recreation Area, extended an extra day when they found themselves trapped by snow in two backwoods lodges near Mill Lake.

The youngsters were never in any particular danger and were undaunted by the sudden change in plans, according to Aldo Chiaverotti, an adult supervisor with the group and principal of Shadywood Elementary school in Warren.

"We started running out of milk and bread, but camp rangers were able to purchase some more from a local store and deliver it on snowmobiles," he said.

Officials at Waterloo said the cabins in which the students were staying were heated and no meals were missed, though the supply of bread ran short and had to be rationed.

Chiaverotti reported the food supply was about to diminish when

Washtenaw county road maintenance crews broke through the snowdrifts Saturday and got the children and their teachers out safely in buses on Saturday night. Originally the group had planned to be out about 11 a.m. Friday.

While snowbound, the students spent their time tobogganing and carving ice sculptures. "We heard a rousing cheer when they finally found out they were going," Chiaverotti added, "but a lot were also talking like 'Wait'll I tell my big brother.'"

Don Cornwell, principal of Charwood Elementary school, said being trapped by the snow was no ordeal. "We just went on with the program. It's just a little inconvenience."

### Mail Delivery Hampered By Snow Piles

Co-operation of rural and city postal customers in keeping the approaches to mail boxes clear during the winter months is requested by Postmaster Richard Schaules.

"Postal customers are responsible for keeping approaches to their mail boxes clear of snow and other obstructions that would make mail delivery difficult or impossible," Postmaster Schaules said. "People should be aware that failure to clear paths to mail boxes promptly after heavy snows may temporarily prevent carriers from making deliveries."

Rural route carriers will make every reasonable effort to serve the greatest number of customers during severe weather, the postmaster said. "But service on foot is not required by rural carriers. Also, when state highway authorities or police consider road travel hazardous, postal service may be curtailed until the inclement weather abates," he said.

Postmaster Schaules would greatly appreciate it if all postal customers would keep the approaches to their boxes clear so that carriers may effect delivery of the mails. If customers should find it impossible temporarily to clear the approach to their box at the present time, they may call at the Post Office for their mail.

#### FRESH START

A fresh start can result in getting the face slapped.

# THE CHELSEA STANDARD

Second Section

CHELSEA, MICHIGAN, THURSDAY, FEBRUARY 2, 1978

Pages 7-12



**ABANDONED WAGON:** The only thing that makes this scene any different from hundreds of others throughout the area this past week-end is that The Standard publisher was in this wagon when it was stranded. This photo was taken on a rescue mission Sunday after road commission crews had dug it out. Snow had drifted over the top of the vehicle when they found it. At about 5:30 Thursday morning, enroute to Grass Lake with The Standard, friendly Mother Nature closed in on us. Drifts were mounting rapidly in a flat open stretch of Old US-12 just east of Francisco Rd. Suddenly vehicle movement stopped, motor overheated, heater hose burst and we were stranded in the damndest blizzard ever seen in this area. Dorr Whitaker's friendly yard light was dimly visible through

the blinding snow. What we later found was only about 200 yards looked like a mile distant in the darkness. We struggled through about 100 feet, falling nearly every step and finally retreated to the shelter of the wagon to wait for daylight. About four hours later a friendly soul, Mitchell Risner from Jackson, with a four-wheel drive pickup found this was the end of the line because of 10 other four-wheel drive vehicles jammed up in what looked like a graveyard for trucks. Risner succeeded in turning around and we rode back to Chelsea with him at about 11 a.m., discouraged and numb with cold. To our Grass Lake area readers, we hope you have received The Standard by now — we tried!

475-2030  
475-8765

115 PARK ST.  
CHELSEA, MICH.

## MAYER AGENCY

(of Springer-Kleinschmidt Agency Inc.)

Your Local Independent Insurance Agency providing dependable protection and prompt claim payment through 10 of the nation's leading insurance companies.

### HOME - AUTO - BUSINESS INSURANCE



Sheridan W. Springer

Charles A. Kleinschmidt

Ruth DeVine

Micky Quackenbush

## Hectic Race in Storm To Hospital Ends Well

Regardless of blizzard-blocked roads and a state of emergency that spurred some 1,100 National Guardsmen into action last week-end, there were some events that simply could not be cancelled, postponed or ignored—like an appointment with the stork.

And, according to a rumor spread by nurses in the maternity ward at St. Joseph Mercy Hospital, Ann Arbor, some of those appointments were moved up a bit by the lowest barometric pressure ever recorded in the Washtenaw county area.

The nurses say the extremely low pressure helped induce early labor in women nearing the end of their pregnancies, filling beds in the maternity ward at St. Joe's with a near record of 50 women over the week-end period.

Among those finding their way to the hospital with the help of civil defense workers, a fire department, a snowmobiler and some strangers in a truck was Celeste Niedermeier of Howell, who entered premature labor last Thursday evening.

It was her first pregnancy, and after conferring with a doctor by telephone early Friday morning that she was actually in labor, Mrs. Niedermeier and her husband, John, climbed aboard their four-wheel-drive truck at about 10 a.m. for the emergency trip to the hospital.

After traveling about three miles, John Niedermeier noticed he had only 3/4 of a tank of gas in his vehicle, so he decided to stop at a service station for the remaining 1/4 tank of fuel.

However, he soon discovered the gas had water in it as he found himself chugging along the road behind a county snowplow. To further complicate the matter, the snowplow became stuck in a snowbank a few miles later, and two plows called out to assist the stranded one also found themselves mired in snow and unable to move.

Forced to retrack and still chugging along, Niedermeier made his way back to Howell where he stopped at the Chilson Grocery Store for assistance. When told he would have to go back through Brighton to get to a hospital, Mrs. Niedermeier began to panic, which speeded up her labor pains.

A snowmobiler offered to help transport her through the snow. As they approached a navigable road she was transferred first to a Jeep, and then to a truck which finally brought her to the Brighton Fire Department.

An officer who took the call during the peak of the snow disaster was unable to locate an escort and ended up telling Mrs. Niedermeier: "You better find

somebody with a good shovel, send up lots of prayers, and I hope you make it."

Faced with these words, Mrs. Niedermeier got back in the truck with some strangers who finally got her to St. Joe's at about 2:30 p.m. Friday.

Some four hours later, she gave birth to a 6 lb., 12 oz. girl, Noelle Jeanine. According to the newborn's maternal grandparents, "Red" and Joe Balogh of Chelsea, as of Monday, "mother and baby were doing fine."

The baby's paternal grandparents, Mr. and Mrs. Joseph Niedermeier of Cadillac, are currently vacationing in Mexico and were unavailable for comment.

In another somewhat less eventful birth over the week-end, Mrs. Edwin Greenleaf, of 633 S. Main St., gave birth to a 7 lb., 13 oz. girl, Heather Dove, on Saturday, Jan. 28, also at St. Joe's.

The baby's father said he was well prepared for the trip to the hospital during the snow disaster, having driven to and from Ann Arbor both Thursday and Friday to plot his route.

### Residents Asked To Clear Walks

Chelsea Police have asked residents to shovel off the snow left on their walks by last Thursday's blizzard so that schools may reopen.

According to police, school officials, concerned with the safety of students on their way to school, have delayed reopening classes because snow-glutted sidewalks may cause students to seek an alternate route along streets and roadsides where their visibility is decreased by snow drifts.

A village ordinance requires residents to clear their walks within 24 hours following a snowstorm.



**STORMY RACE TO HOSPITAL WON:** Celeste Niedermeier holds her newborn daughter, Noelle Jeanine, a day after the baby was delivered at St. Joseph Mercy Hospital. To get to the hospital last Friday, Mrs. Niedermeier started out from Howell, found herself halfway to Ann Arbor before she was forced to retrack to Howell, then went on to Brighton, and finally arrived at St. Joe's in a truck driven by a total stranger.

#### SEC Wrestling

#### Tourney Postponed

The Southeastern Conference Wrestling Tournament, originally scheduled to take place in Dexter on Saturday, Jan. 28, has been postponed due to the blizzard until Tuesday, Feb. 7, at the high school.

Please Notify Us In Advance of Any Change in Address

#### Metric Workshop

#### Postponed By 70 mm.

#### Accumulation of Snow

A free Metric Workshop which had been slated for Monday, Jan. 30 was postponed last week because of snow. The event has been rescheduled for Monday, Feb. 13, 8 to 10 p.m. in the Beach Middle school science rooms.

Subscribe today to The Standard!

## RICK'S MARKET

20490 M-52

"The Store with the Spartan on the Door"

Phone 475-2898

ECKRICH  
Reg. or Beef  
FRANKS  
1-Lb. Pkg. **99¢**

PEACOCK'S BULLDOG  
Norwegian  
SARDINES  
3 3/4-Oz. Can **49¢**

CAMPBELL'S  
BEEF  
SOUP  
11-Oz. Can **29¢**

FARMER PEET'S  
BONANZA  
HAMS  
Lb. **\$1.99**

SPARTAN GRADE A  
**LARGE EGGS**  
**59¢ doz.**

BETTY CROCKER  
Potato  
Stroganoff  
**HAMBURG HELPER**  
7-Oz. Box **79¢**

PET  
**HEARTLAND SYRUP**  
(No Preservatives)  
24 Fl. Oz. **75¢**

KELLOGG'S  
**SUGAR CORN POPS**  
15-Oz. Box **\$1.09**

**DRIVE LAUNDRY DETERGENT**  
49-Oz. Box **\$1.39**

PILLSBURY CHERRY NUT  
**QUICK BREAD MIX**  
16.6-Oz. Box **93¢**

LOOK OUT - In the near future, we will be bringing you another new item from our ovens!

## RICK'S HOT BREAD DAILY

Weekdays by 3:30 p.m. Sat. & Sun., by 10:30 a.m.

(QUANTITY RIGHTS RESERVED)

### Residential - Commercial REMODELING

FREE ESTIMATES

Ib V. JENSEN and SON

LICENSED BUILDER

378 Spring Lake Drive  
Chelsea, Mich.  
PHONE 475-1820

## FIFTH ANNUAL WINTER CARNIVAL

CAVANAUGH LAKE

FRIDAY, SATURDAY & SUNDAY  
FEBRUARY 3rd, 4th & 5th

Snowmobilers Welcome - Trails - Guides

Sponsored By

CHELSEA AMERICAN LEGION POST 31



**Ads  
Taken  
Till 1 p.m.  
Tuesday**

# PUT IT IN THE CHAIN FOR RESULTS

**Just  
Phone  
475-1371**

## WANT ADS

### The Chelsea Standard

#### WANT AD RATES

PAID IN ADVANCE—All regular advertisements, 75 cents for 25 words or less, each insertion. Count each line as a word. For more than 25 words add 4 cents per word for each insertion. "Blind" ads or box number ads, \$50 extra per insertion.

CHARGE RATES—Same as cash in advance, with 25 cents bookkeeping charge if not paid before 1 p.m. Tuesday preceding publication. Pay in advance, send cash or stamps and save 25 cents.

DISPLAY WANT ADS—Rate, \$1.40 per column inch, single column, width only, 8-point and 14-point light type only. No borders or boldface type. Minimum 1 inch.

CARDS OF THANKS or MEMORIALS—Single paragraph style, \$1.50 per insertion for 50 words or less, 3 cents per word beyond 50 words.

COPY DEADLINE—1 p.m. Tuesday week of publication.

ERRORS—Advertisers should check their ads the first publication. This newspaper will not be liable for errors in publication except to the extent of the cost of the ad for the first week's insertion. Adjustment for errors is limited to the cost of portion of the ad wherein the error occurred.

**LEONARD REITH**  
Master Plumber  
Licensed Electrician  
Hot Water Heat  
18238 N. Territorial  
Rd.  
Chelsea, Mich. 48118  
Phone: 475-2044

**HEATING  
SPECIALISTS**  
**HILLTOP INC.**  
8316 Workner Rd., Chelsea.

**PARTS**  
A hard to find item? Call us.

**NEW  
INSTALLATION**  
Want the best? Call us.

**SERVICE**  
Furnace out? Call us.

475-2949  
"Serving the area  
for over 20 years"

**SNOW PLOWING**—Evenings and week-ends. Ph. 475-8984.

**FOR SALE**—Organ, Lowry Holiday Deluxe, complete learning tapes. Built-in cassette recorder for learning, head phone. All music included. Plays beautifully. Phone 475-9506.

**CORRECTIVE HORSESHOEING** and trimming. Mike Briscoe, Ph. 561-3036.

**PIANO LESSONS** in my home. Experienced, references. Ph. 475-9523.

## WANT ADS

**FOR RENT:**

**Music Machines**

**Juke Boxes**  
for Parties,  
Receptions or  
Any Special Gathering.

**CALL**

**Zemke  
Operated Machines**  
Days 662-1771

**FOR SALE**—Fantastic building site, 9 terraced acres with spring-fed pond on Madden Rd. in Dexter school district. Call Midwest Brokers, 994-0700.

**Automotive  
Rust Proofing  
Cars and Trucks**

**Village  
Motor Sales, Inc.**  
CHRYSLER - DODGE  
PLYMOUTH - DODGE TRUCKS  
Phone 475-8661  
1185 Manchester Rd., Chelsea  
Hours: 8 a.m. to 5:30 p.m.  
Tues. thru Fri. Until 8 Monday  
9 a.m. to 1 p.m., Saturday

**2 RABBITS FOR SALE**—Male and female, cages included, \$10. Ph. 426-4049.

**QUASAR  
TELEVISION  
Sales & Service**

Service on most major brands. Also, antenna installation and antenna supplies.

**PORTER'S TV**  
212 Buchanan St., Chelsea  
Ph. 475-5380

**TYPISTS  
and  
CLERKS**

**NEEDED** for temporary job assignments in the Ann Arbor area. No fees. Call Sue Zink at 971-1631 for more information.

**Gerry Rushing  
Temporary Help  
Service**

**CARPENTER WORK**—Inside or out. Mr. Coburn, 475-2883.

**HOUSE FOR SALE**

In village of Waterloo on 1 1/2 acres. Two bedrooms or more, large family room with kitchen and fireplace, basement, garage, large attic, 1 1/2 baths, insulated. Nice 1,400-sq. ft. barn. Separate old schoolhouse on quiet Washington St. \$50,000. Call 475-8111 afternoons or evenings.

**LOST**—Set of keys with AAA connecting link and Village Motors tag in Schoolhouse Apts. parking lot area, Reward. Call Ricardo's at 475-1671 or drop off.

## WANT ADS

**WEDDING STATIONERY**—Prospective brides are invited to see our complete line of invitations and wedding accessories. The Chelsea Standard, 900 N. Main, Ph. 475-1371.

**STEP UP TO**

**KOZMA  
CONSTRUCTION**

**And  
Step  
Down  
In  
Price**

**CALL**

**LEN KOZMA**  
475-7452

**— YOUNG —**

We list and sell lake, country and town properties. Eugene Young, Real Estate & Builder, 878-3792, 11596 Dexter-Pinckney Rd., Pinckney 48169.

**MECHANIC**

Now taking applications for mechanic. Experienced, for general repairs on diesel trucks. Good wages and benefits. Apply in person, 10 a.m. to 4 p.m., at the control desk.

**Union 76 Truck Plaza**

1-94 and Baker Rd.  
Dexter Exit

**RADIO, STEREO and  
PHONOGRAPH REPAIR**

CB Sales & Installation  
Second Class License  
**THE MUSIC HUTCH**  
8407 Main St., Dexter  
426-4380

**BODY SHOP**

**COMPLETE FULL TIME  
Estimates Available**

**PALMER FORD**

222 S. Main  
475-1301

**SKIS FOR SALE**—K-2 Twos 200 cm. skis. Great powder skis. Only \$20 or best offer. May be seen at Chelsea Standard office, or phone 682-0524 after 5 p.m.

**ATTIC  
INSULATION**

**Class I.**  
Cellulose Insulation  
installed by trained  
installers

**FOAM  
WALL INSULATION**

Highest thermal efficiency  
of any insulation type.

**FOAM MASTERS**

Complete insulation contractor  
Licensed and Insured.

475-1625

Free Estimates

**MAUSOLEUMS \* MONUMENTS  
BRONZE TABLETS \* MARKERS**

**BECKER  
MEMORIALS**

4033 Jackson Road  
ANN ARBOR, MICHIGAN

## WANT ADS

**CUSTOM  
BUILDING**  
LICENSED & INSURED  
FREE ESTIMATES

**TOTAL  
CONSTRUCTION  
SERVICES**

—Homes, factories, warehouses  
—Pole buildings  
—Garages  
—Remodeling - Additions  
—Aluminum Siding  
—Roofing  
—Masonry Work, fireplaces, block work, patios, etc.

**SLOCUM  
CONTRACTORS  
& BUILDERS**

Serving Washtenaw County  
For Over 20 years  
20700 OLD US-12  
CHELSEA  
Phone 475-8321 or 475-7611

**DON'T FORGET** your Shrove Tues. Smorgasbord tickets. Call 475-2545.

**CLINICAL NURSES**—We have psychiatric nursing positions available on the day and afternoon shifts. No split shifts, few, if any, weekends. Salary to \$18,850, depending on experience. Excellent fringe benefits provided through Michigan Civil Service. To apply contact Personnel Office, Ypsilanti Regional Psychiatric Hospital. An equal opportunity employer. (313) 434-3400.

**Clearance Sale**

**New '77  
Cars & Trucks  
In Stock**

'77 NEW YORKER Brougham 4-dr., fully equipped .....SAVE

'77 DODGE W-150, 4-wheel drive, 115-in. wheelbase, Macho pkg., 360, auto., p.s., p.b., AM-FM .....SAVE

**DEMO**

'78 LE BARON Medallion 4-dr., 318, auto., p.s., p.b., leather interior, air, etc. ....SAVE

'78 VOLARE coupe, 225, auto., p.s., p.b., bucket seats, stereo SAVE

**Driver Training Car**

'78 ASPEN Custom 4-dr., 6-cyl. auto., p.s. ....SAVE

**Used Trucks**

'76 FORD F-150 pick-up, 6-cyl. auto., p.s., sliding rear window, 10,000 original miles .....\$3695

'76 CHEVY Van, 350, auto., p.b., camper conversion. Radial tires .....\$4295

'75 PLYMOUTH Voyager Sport, V-8, auto., p.s., p.b., air cond. ....\$4695

'75 PLYMOUTH Voyager, 318, auto., p.s., p.b., low mileage .....\$3695

'75 CHEVY Suburban, 350, auto., p.s., p.b., air, Sure-Grip, Scotti dale pkg. ....\$2995

'75 DODGE W-100, 4-wheel drive pick-up, 318, 4-speed, p.s., p.b., Meyers snow plow .....\$4995

'72 DODGE D-100, 360, auto., p.s., p.b., SE pkg., one owner \$1495

**Quality Used Cars**

'76 PINTO Runabout, 4-speed, low mileage .....\$2995

'75 CADILLAC Eldorado coupe, full power, white exterior and leather interior .....\$4995

'72 PLYMOUTH Fury 4-dr., 360, auto., p.s., p.b., air cond., one owner .....\$1095

'72 DODGE Polara 4-dr., 318, auto., p.s., p.b., one owner .....\$1195

'72 CHEVY Bel Air 4-dr., V-8, auto., p.s. ....\$895

'72 CHRYSLER Newport 4-dr., V-8, auto., p.s., p.b., air cond., powerlocks .....\$1095

'71 FORD station wagon, V-8, auto., p.s. ....\$395

**Village  
Motor Sales, Inc.**

CHRYSLER - DODGE  
PLYMOUTH - DODGE TRUCKS

Phone 475-8861  
1185 Manchester Rd., Chelsea  
Hours: 8 a.m. to 5:30 p.m.  
Tues. thru Fri. Until 8 Monday

**PART-TIME CLERICAL** receptionist with excellent typing and phone manner. Please send confidential resume in Box 112, care of Chelsea Standard.

## WANT ADS

**C—ustom Built Homes**

**O—h! We Remodel too**

**U—can count on us**

**N—o Job Too Small**

**T—rim Inside & Out**

**R—ough-In Only If**

**Y—ou Want to Finish**

**S—iding Aluminum, 5" Gutters**

**I—mmediate Attention**

**D—ALE COOK & CO.**

**E—stimates, Free**

**BUILDERS**

Please Call

475-9153

**DALE COOK**

**HOMEMAKERS** interested in making good extra money working from home in your spare time. Please call Barb or Gayle at 475-7810.

**FOR RENT**—Trailer space in Chelsea Mobile Home Park, Ph. 553-3944.

**ANTIQUITY SHOW**—Jackson V. Center Antique Show runs Feb. 3, 4 and 5 at the Sheraton Inn, downtown Jackson, Michigan. (Formerly held at the Rollatorium). Doors open at noon. Admission donation \$1.50. Underground parking available.

**WATERLOO REALTY**

**VERY NEAT** 1,248 sq. ft. 3-bedroom ranch-style home, 1 1/2 baths, extra insulation adds warmth with low heating cost, 24x36 ft. 2-car garage includes covered patio. Excellent garden spot, on one acre. Muntz area. 20 min. from Chelsea. \$42,500.

**ECONOMICAL TO HEAT**—This "extremely well-insulated" 2-bedroom home. Full basement, attached garage. On 4 acres of land. Stockbridge schools. \$51,000.

**ALL ON ONE LEVEL**—4-bedroom home, study-den or 5th bedroom, two full baths, large family room, hardwood floors, spacious living room is carpeted. Recreation area in paneled basement. Landscaped corner lot in Village of Chelsea. \$58,000.

**1 1/2 ACRES**, rolling, woods, blacktop road. Twenty minutes west of Chelsea. \$60,000. Land contract possible.

**LARGE COUNTRY BUILDING** SITE—Blacktop road, natural gas available. Rustic footbridge spans beautiful creek and connects with State Land into Unadilla Wildlife Area. \$8,000.

**2.3 ACRES**—Heavily wooded, surveyed, blacktop road, Waterloo Rec. Area. \$7,300. Land contract possible.

**6 ACRES**—Very private, rolling land, two springs, woods, approved well, septic system and electric on property. Gregory area, 15 min. from Chelsea. \$16,500.

**13.9 ACRES**—Private road, nice roll, choice of several building sites. Muntz area. \$14,750.

**80 ACRES**—Scenic, hills, wooded land, nestled amidst thousands of acres of State Land in Waterloo Rec. Area. 15 min. from Chelsea. \$90,000.

**WATERLOO REALTY**

355 Clear Lake

**JOANN WARYWODA, BROKER**

Phone 475-8674

Evenings and Sundays:

Jerry Gondek .....475-8285

Paul Erickson .....475-7322

Sue Lewie .....1-517-522-5252

Carol Lakatos .....475-7129

**FOR SALE**

**Brand New Home**

3-bedroom, 1 1/2 baths, energy-saving home on 1 acre. Chelsea schools. Easy route to I-94. Ready to move in

\$47,900

**WEBER HOMES**  
Ph. 475-2828

**NEEDED**—1. Retail clerk for health food store. 2. Live-in housekeeper. Ph. 761-8556 after 10 a.m.

**1977 FORD**—F-250 Camper Special, 460, 4-barrel, air conditioning, AM-FM stereo. Loaded. Ph. between 6 a.m. and 7 p.m. 426-9330.

**CASH FOR  
LAND CONTRACTS**

Any type of real estate throughout Michigan. No commissions or costs. F.I.C. National Accept. Call Free 1-800-232-1550.

## WANT ADS

**FOR RENT**—Fair Service Center for meetings, parties, wedding receptions, etc. Weekdays or week-ends. Contact John Wellnitz, phone 475-1518.

**R. L. BAUER  
Builders**

**LICENSED AND INSURED  
Custom Building**

Houses - Garages  
Pole Barns  
Roofing - Siding  
Concrete Work

**FREE ESTIMATES**  
Call 475-1218

**J. R. CARRUTHERS**

**LICENSED  
RESIDENTIAL BUILDER**

**CUSTOM HOMES  
ADDITIONS/FIREPLACES  
PATIO**

**ROOFING/SIDING/REPAIRS**

475-7234  
CHELSEA

**VACUUM CLEANERS**

Authorized Electrolux  
sales and service.

**James Cox**  
428-8444, or 428-6686  
118 Riverside Dr., Manchester

**FOR SALE**—1973 Columbia snowmobile with 2-place trailer. Ph. 475-2419.

**FOR RENT**—1977 Ford 12-Pass. Club Wagon Buses and Econoline Vans by the day, week-end, week or month. Insurance. Palmer Ford, 222 S. Main. 475-1301 for rates. 331f

**SEAMLESS ALUMINUM** eaves, troughs, roofing, siding, and carpentry work of all kinds. Experienced installers. All work guaranteed. For free estimate, call R. D. Kleinschmidt Co., 428-8836.

**ROOFING SPECIALIST**—All types of roof repairs, homes, barns, commercial. Insurance repairs. Asphalt shingles, hot built-up roofing, cedar-slate tile-asbestos. Awnings and porch enclosures. Siding and storm windows. Call Joe Hayes for free estimates. Manchester, 428-8520.

**WE HAVE LISTINGS** in the Dexter, Chelsea and Lakes areas. Call us for your next home.

**ED COY REALTY**

426-3948  
Member Ann Arbor Board  
of Realtors

Ed Coy .....426-8235

Rae Kozlowski .....426-8874

List your home with us

**SAND**

**GRAVEL**

**KLINK  
EXCAVATING**

Bulldozer - Backhoe  
Road Work - Base Work  
Trucking - Crane Work  
Top Soil - Demolition  
Drainfield - Septic Tank  
Trenching, 5' up

Industrial, Residential, Commercial  
CALL 475-7631

## WANT ADS

**CUSTOM SEWING and alterations.**  
Ph. 475-2248.

**Headquarters for**

**RED WING  
WORK SHOES**

**Foster's Men's Wear**

**FOR RENT**—5-bedroom older house in Stockbridge, \$200 per month plus utilities. Ph. 475-2808, evenings, and (517) 851-7711, days.

**Fireplace Builder**

field stone mason, block and brick mason, tuck pointing.  
**FREE ESTIMATES**  
Call 475-8025 after 3 p.m.

**Patrick Grammatico**

**McCulloch**

**Portable Generators**

**Chain Saws**

**WE SELL SERVICE,  
SHARPEN AND TRADE.**

**Chelsea Hardware**

**THORNTON**

475-8628

**THERE'S NO TIME** like the present to purchase this lovely 4-bedroom ranch and get away from the city! Rec. room. Walk-out basement. On 1 1/2 acres. \$70,900.

**LAKEFRONT HOME**—Beat the rush and let us show you this 5-bedroom family home now!







# NOTICE

## DEXTER TOWNSHIP TAXPAYERS

I will be at Dexter Township Hall, 6880 Dexter-Pinckney Rd., Dexter, to collect Dexter Township taxes on the following days: every Wednesday afternoon 1 to 4 p.m., and Friday, 9 a.m. to 5 p.m. through December, 9 to 4 in January and February.

Those who wish may send check or money order. Receipts will be returned by mail.

All dog licenses must be paid to the Dexter Township Treasurer before March 1, 1978 to avoid penalty.

ALL DOG LICENSES \$4.00

Rabies vaccination papers must be presented in order to obtain dog licenses.

**LORINDA JEDELE**  
DEXTER TOWNSHIP TREASURER

# NOTICE

## Lima Township Taxpayers

Office hours for collecting taxes will be Wednesdays and Fridays 9 a.m. to 6 p.m., Saturdays 9 a.m. to 12 noon Dec. 1 through Feb. 25. Monday, Feb. 27, 9 a.m. to 6 p.m., Tuesday, Feb. 28, 9 a.m. to 12 midnight. Will be at Chelsea State Bank all Fridays in February, 9 to 11:30 a.m. and 1 to 5 p.m. Those who wish may send check. Receipt will be returned by mail.

All Dog Licenses must be paid to Lima Township Treasurer before March 1, 1978, to avoid penalty.

ALL DOG LICENSES \$4.00

Rabies Vaccination Papers must be presented in order to obtain dog license.

**JEAN TILT**

LIMA TOWNSHIP TREASURER

Advertise Your Auction in The Standard!

# —NOTICE—

## Sylvan Township Taxpayers

Sylvan Township Treasurer will be at Sylvan Township Hall, 112 W. Middle St., Chelsea, to collect Sylvan Township Taxes every Wednesday and Friday from 1 to 5 p.m., and Saturday from 10 a.m. to 3 p.m., beginning Friday, Dec. 3 until Feb. 28, 1978.

CHECKS WILL BE ACCEPTED BY MAIL

All Dog Licenses must be paid to Sylvan Township Treasurer before March 1, 1978, to avoid penalty.

ALL DOG LICENSES \$4.00

Rabies Vaccination papers must be presented in order to obtain license.

**FRED W. PEARSALL**

SYLVAN TOWNSHIP TREASURER

Phone 475-7251

# NOTICE

## LYNDON TOWNSHIP TAXPAYERS

I will be at my home at 9508 Beeman Rd. to collect Lyndon Township taxes and issue dog licenses every Monday and Friday between 10:00 a.m. and 4:00 p.m. during December, January, and February, and at the Chelsea State Bank, Saturdays, February 18 and 25 between 9:00 a.m. and 12:00 noon.

Those who wish may send check or money order in payment of taxes and dog licenses. Enclose complete tax notice. Receipts will be returned by mail.

All dog licenses must be paid to the Lyndon Township Treasurer before March 1, 1978 to avoid penalty.

ALL DOG LICENSES \$4.00

Unexpired Rabies Vaccination Papers must be presented to obtain license.

**BARBARA RODERICK**

LYNDON TOWNSHIP TREASURER

9508 Beeman Rd., Cross Lake, MI 49240 Ph. 475-7056

# + Services in Our Churches +

**CONGREGATIONAL CHURCH**  
(United Church of Christ)  
The Rev. Carl Schwarm, Pastor  
Sunday, Feb. 5—  
10:30 a.m.—Worship and church school.

**ZION LUTHERAN CHURCH**  
Corner of Fletcher, Waters Rds.  
The Rev. John R. Morris, Pastor  
Saturday, Feb. 4—  
9:00 a.m.—8th grade Youth instruction.

10:30 a.m.—7th grade Youth instruction.  
Sunday, Feb. 5—  
9:00 a.m.—Sunday school.  
10:15 a.m.—Worship.  
Monday, Feb. 6—  
8:00 p.m.—Senior Choir.  
Tuesday, Feb. 7—  
4:00 p.m.—Junior Choir.

**ST. THOMAS**  
**EVANGELICAL LUTHERAN**  
Ellsworth and Haab Rds.  
The Rev. Jerome Dykstra, Pastor  
Sunday, Feb. 5—  
9:30 a.m.—Sunday school, Bible classes, and confirmation classes.  
10:45 a.m.—Worship service.

**IMMANUEL BIBLE CHURCH**  
145 E. Summit St.  
The Rev. LeRoy Johnson, Pastor  
Every Sunday—  
9:45 a.m.—Sunday school, nursery provided.  
11:00 a.m.—Morning worship, nursery provided.  
6:00 p.m.—Evening worship.  
Every Wednesday—  
7:00 p.m.—Family hour, prayer meeting and Bible study.

**ST. JACOB EVANGELICAL LUTHERAN CHURCH**  
12861 Rietmiller Rd., Grass Lake  
The Rev. Andrew Bloom, Pastor  
Every Sunday—  
9:00 a.m.—Worship service.  
10:15 a.m.—Divine services.

**METHODIST HOME CHAPEL**  
Chaplain Ira Wood, Pastor  
Every Sunday—  
8:45 a.m.—Worship service.

**FIRST UNITED METHODIST CHURCH**  
The Rev. Marvin H. McCullum, Pastor  
Sunday, Feb. 5—  
10:00 a.m.—Worship service (crib nursery for infants to 2 years of age, church school for children ages 2-5).

10:20 a.m.—Church school for children from kindergarten through 6th grade.  
11:00 a.m.—Adult Discussion class in the Social Center, Junior high church school. Coffee and punch hour.  
11:10 a.m.—Senior high church school.  
Monday, Feb. 6—  
7:30 p.m.—Work Area in Education in the Education Building.  
Tuesday, Feb. 7—  
7:30 p.m.—Church school teachers meeting in the Education Building.

Wednesday, Feb. 8—  
3:30 p.m.—Kinder Choir.  
4:00 p.m.—Praise Choir.  
7:00 p.m.—Ash Wednesday service.

8:00 p.m.—Chancel Choir.  
Thursday, Feb. 9—  
7:15 p.m.—Adult class and fellowship.

**CHURCH OF CHRIST**  
13861 Old US-12, East  
Evangelist John M. Hamilton  
Every Sunday—  
10:00 a.m.—Church school.  
11:00 a.m.—Worship service. Nursery will be available.

6:00 p.m.—Worship service.  
Every Wednesday—  
7:30 p.m.—Bible study.

**FIRST UNITED PRESBYTERIAN CHURCH**  
Unadilla  
The Rev. T. H. Liang, Pastor  
Every Sunday—  
9:45 a.m.—Sunday school.  
11:00 a.m.—Worship service.

**FIRST CHURCH OF CHRIST SCIENTIST**  
1883 Washtenaw Ave., Ann Arbor  
Every Sunday—  
10:30 a.m.—Sunday school, morning service.

**ST. PAUL**  
**UNITED CHURCH OF CHRIST**  
The Rev. R. J. Ratzlaff, Pastor  
Saturday, Feb. 4—  
9:00 a.m.—Confirmation.  
Sunday, Feb. 5—  
9:00 a.m.—Church school.  
10:30 a.m.—Worship service and church school.

**ST. JOHN'S**  
**UNITED CHURCH OF CHRIST**  
Rogers Corners  
Every Sunday—  
10:30 a.m.—Worship service.

**BETHEL EVANGELICAL AND REFORMED CHURCH**  
(United Church of Christ)  
Freedom Township  
The Rev. Roman A. Reineck, Pastor  
Every Sunday—  
10:00 a.m.—Worship service.

**ST. MARY CATHOLIC CHURCH**  
The Rev. Fr. David Philip Dupuis, Pastor  
Mass Schedule:  
Every Saturday—  
4:00-8:00 p.m. Confession.  
7:00 p.m.—Mass.  
Immediately after 7 p.m. Mass, Confession.  
Every Sunday—  
8:00 a.m., 10:00 a.m., 12:00 noon—Mass.

**OUR SAVIOR LUTHERAN CHURCH**  
1516 S. Main, Chelsea  
The Rev. William H. Keller, Pastor  
Sunday, Feb. 5—  
9:00 a.m.—Sunday school and Bible classes.

10:30 a.m.—Worship service with Holy Communion. Transfiguration Sunday.  
2:30 p.m. to 4:30 p.m.—"Lift With God."  
Monday, Feb. 6—  
7:30 p.m.—Elders' meeting.  
Tuesday, Feb. 7—  
9:30 a.m. to 11:30 a.m.—"Lift With God."

Wednesday, Feb. 8—  
Confirmation classes.  
6:30 p.m.—Agape Meal.  
7:30 p.m.—Communion service.  
Thursday, Feb. 9—  
9:30 a.m.—LWML Prayer Service. Guild meeting follows.

**CHELSEA BAPTIST CHURCH**  
The Rev. James Stacey, Pastor  
377 Wilkinston St.  
Every Sunday—  
9:45 a.m.—Sunday school for the whole family.

11:00 a.m.—Morning worship service and children's church.  
6:00 p.m.—Evening service, informal singing, sharing, study and discussion. (Nursery care provided for all services.)  
Home Bible Studies each week in the homes of the elders.  
For information, call 475-8323.

**FAITH EVANGELICAL LUTHERAN CHURCH**  
9575 North Territorial Rd., Dexter  
The Rev. John P. Huebner, Pastor  
Every Thursday—  
4:15 p.m.—8th grade Confirmation class.

5:45 p.m.—8th grade Confirmation class.  
Every Sunday—  
9:00 a.m.—Sunday school for ages 4-11. Teen classes for 7th graders-12th graders.  
10:00 a.m.—Worship service.  
Every Tuesday—  
4:30 p.m.—7th grade Confirmation class.  
7:30 p.m.—Inquirers.

**ST. JOHN'S EVANGELICAL AND REFORMED CHURCH**  
(United Church of Christ)  
Francisco  
The Rev. Virgil King, Pastor  
Every Sunday—  
10:30 a.m.—Church services.

**FIRST ASSEMBLY OF GOD**  
The Rev. Richard Coury, Pastor  
Every Sunday—  
9:45 a.m.—Sunday school.  
11:00 a.m.—Worship service.  
6:00 p.m.—Evening worship.  
Every Wednesday—  
7:00 p.m.—Christ's Ambassadors. Missionettes. Bible meditation and prayer.

**GREGORY BAPTIST CHURCH**  
Every Sunday—  
9:45 a.m.—Sunday school.  
11:00 a.m.—Morning worship.  
8:00 p.m.—Young people.  
7:00 p.m.—Evening worship.  
7:30 p.m.—Thursday mid-week worship service.

**BAHA'I FIRESIDE**  
Every Thursday—  
8:00 p.m.—At the home of Toby Peterson, 705 S. Main St. Anyone wishing to learn about the Baha'i faith is welcome.

**NORTH SHARON BIBLE CHURCH**  
Sylvan and Washburne Rds.  
The Rev. Ronald C. Purkey, Pastor  
Every Sunday—  
10:00 a.m.—Sunday school. (Nursery available). Junior church classes.

11:00 a.m.—Worship service.  
6:00 p.m.—Senior High Youth meeting. Youth Choir.  
7:00 p.m.—Evening worship service. (Nursery available.) All services interpreted for the deaf.  
Every Wednesday—  
7:00 p.m.—Bible study and prayer meeting. (Nursery available.) Bus transportation available: 428-7222.

**ST. BARNABAS EPISCOPAL CHURCH**  
2050 Old US-12  
The Rev. Fr. Jerold F. Beaumont, B.S.P.  
Every Sunday—  
10:00 a.m.—Holy Communion first, third, and fifth Sundays, and 7:30 p.m. every Wednesday.

10:00 a.m.—Morning prayer. Second and fourth Sundays. Church school and nursery every Sunday.  
Every Wednesday—  
8:15 p.m.—Bible study and discussion groups.  
First Wednesday of every month—Bishop's Communion.  
Third Thursday of every month—Episcopal church women.

**WATERLOO VILLAGE UNITED METHODIST CHURCH**  
818 Washington St.  
The Rev. Glenn Kjellberg, Pastor  
Every Sunday—  
10:00 a.m.—Sunday school.  
11:15 a.m.—Worship service.

**SALEM GROVE UNITED METHODIST CHURCH**  
3320 Notten Rd.  
The Rev. Gerald R. Parker, Pastor  
Every Sunday—  
9:30 a.m.—Sunday school.  
10:30 a.m.—Worship service.

**CHURCH OF JESUS CHRIST OF LATTER-DAY SAINTS**  
Meetings at  
Church of Jesus Christ of Latter-Day Saints  
2141 Brockman, Ann Arbor  
Every Sunday—  
9:30 a.m.—Sunday school.

**CHELSEA FREE METHODIST FELLOWSHIP**  
Meetings at St. Barnabas Episcopal Church  
2050 Old US-12  
The Rev. William L. Cryderman, Pastor  
Call 475-8863 for information.

Every Sunday—  
4:00 p.m.—Worship service.  
5:00 p.m.—Adult Bible Study and Sunday school for all ages.  
Every Wednesday—  
3:30 p.m.—Junior Choir at the Pratt residence, 625 N. Main St.  
Every Thursday—  
7:00 p.m.—Prayer meeting at the church except for the third Thursday of every month. Family Night in homes, call for location.

**NORTH LAKE UNITED METHODIST CHURCH**  
The Rev. John Elliott, Pastor  
Every Sunday—  
10:00 a.m.—Church school.  
10:00 a.m.—Worship service.

# When Does Therapy End?

By Bill Kiser

Many handicapped people today are asking, "When does the therapy end?" As a person with a very severe cerebral palsy involvement, different forms of therapy have been, and still are, an important part of my life. I've been through the gamut of "physiotherapy, and occupational therapy, and speech therapy, and comprehensive rehabilitation. Each has given me some benefits. None has been a panacea.

Many disabled people, especially the developmentally disabled, have compared therapy with education. Therapy was supposed to be a preparation for a better life. We often thought that when we completed our therapy we would be able to live like other people. This may be the case for some handicapped people, but for others of us it is a fallacy. Not only do we require therapy to accomplish any new goals, but it is often essential to maintain our present level of functioning.

As more severely handicapped people attempt to find employment, live independently, and function within their communities, they are finding that the need for rehabilitation services never ceases. Fortunately, there seems to be a growing realization on the part of many professional and lay leaders that the severely handicapped need follow-up services if they are to reach and maintain their maximum potential.

Many of us find ourselves in a great dilemma because of this. On the one hand we are forced to admit that we need many types of therapy and on the other hand we resent what could be called the "therapeutic" outlook of others. We often have difficulty dealing with the fact that when we need others to help us, it can create problems in establishing normal, healthy relationships. This is often apparent in family situations. If a handicapped person has been dependent on those around him for a long period of time, it is difficult, if not impossible, for these people to see him as an equal human being.

My own work with rehabilitation publications is very rewarding, but I do not know whether the people I am working with see me as patient or co-worker. The fact that I often need their professional help does nothing to ease this problem. I sometimes want to write about the sex life of the African ant in order to escape from the therapeutic context.

It would be easy to blame this entire problem on the non-handicapped. This is not wholly justified. Recently when I sought professional advice on this very problem, I realized to my astonishment that by seeking help I was reinforcing the very problem that I was trying to solve. In our attempts to improve ourselves and gain a greater independence, we sometimes find ourselves developing a greater dependency on others.

If we who are handicapped require certain forms of therapy, does this mean we are inferior? This is the crux of the dilemma. If our need for therapy and other types of services does denote inferiority, we have little hope of gaining equal citizenship. It became evident during the recent White House Conference on Handicapped Individuals that disabled people do not feel that their need for special services should take away any of their rights as citizens.

When society learns to value independence more than dependence for everyone, the handicapped will have a far greater chance for a rewarding life. Today most people are dependent on their plumbers, TV repairmen, and auto mechanics—and think nothing of it. Barbers and beauticians provide necessary services without creating any stigma for their clients. Receiving ordinary medical care does not cast the average citizen in a dependent role. Why, then, should needing therapeutic assistance lower the image of a handicapped person?

Handicapped people should not feel inferior for their need of continuing therapy and special services. If such services enable them to be productive individuals, their status and rights should not be impaired in any way. True, therapy may never end for many severely handicapped people. Neither will education end for many so-called normal people. The same way that the dependency of the young child on a kindergarten teacher must come to an end as the student matures, so must the dependency mode of the therapeutic relationship come to an end. Such a model does more than deprive those who work with—and for—them of the satisfaction and helping fellow human beings achieve their full potential.

# — OFFICIAL NOTICE —

## REGULAR MEETING OF THE DEXTER TOWNSHIP BOARD

will be held

Tuesday, February 7, 1978 - 7:30 p.m.

at the Dexter Township Hall, 6880 Dexter-Pinckney

ITEMS TO BE DISCUSSED:

- 1) Zoning Ordinance changes, including definition
- 2) Zoning Board of Appeals membership.

WILLIAM EISENBEISER  
Dexter Township Clerk

# REGISTRATION NOTICE

FOR

## VILLAGE ELECTION Monday, March 13, 1978

TO THE QUALIFIED ELECTORS OF THE

## Village of Chelsea

COUNTY OF WASHTENAW, STATE OF MICHIGAN

Notice is hereby given that in conformity with the "Michigan Election Law", I, the undersigned Clerk, will open any day, except Sunday and a legal holiday, the day of any regular or special election or primary election, receive for registration the name of any legal voter in said Township, City or Village not already registered who may APPLY TO ME PERSONALLY for such registration. Provided, however, that I can receive no names for registration during the time intervening between the Thirtieth day before any regular, special or official primary election and the day of such election.

NOTICE IS HEREBY GIVEN THAT I WILL BE AT MY OFFICE

Feb. 13, 1978 - Last Day

From 8 o'clock a.m. until 8 o'clock p.m.

The 30th day preceding said election

As provided by Section 498, Act No. 116,

Public Acts of 1954

at Municipal Building, 104 E. Middle St.

For the purpose of REVIEWING the REGISTRATION and REGISTERING such of the qualified electors in said TOWNSHIP, CITY or VILLAGE as SHALL PROPERLY apply therefor.

The name of no person but an ACTUAL RESIDENT of the precinct at the time of registration, and entitled under the Constitution, if remaining such resident, to vote at the next election, shall be entered in the registration book.

### Elector Unable To Make Personal Application, Procedure

SEC. 504. Any elector who is unable to make personal application for registration because of physical disability or absence from the Township, City or Village in which his legal residence is located, may be registered prior to the close of registration before any election or primary election by securing from the Clerk of the Township, City or Village in which is located his legal residence, duplicate registration cards and executing in duplicate the registration affidavit before a notary public or other officer legally authorized, with the election board in the precinct in which he is registered at the next ensuing primary or election. The notary public or other officer administering the oath shall sign his name on the line for the signature of the registration officer and designate his title.

### Unregistered Persons Not Entitled To Vote

SEC. 491. The inspectors of election at any election or primary election in this State, or in any District, County, Township, City or Village thereof, shall not receive the vote of any person whose name is not registered in the registration book of the Township, Ward or Precinct in which he offers to vote. (As provided under Act 116, P. A. 1954.)

### Transfer of Registration, Application, Time

SEC. 506. Any registered elector may upon change of residence within the Township, City or Village cause his registration to be transferred to his new address by sending to the Clerk a signed request, stating his present address, the date he moved thereto, and the address from which he was last registered, or by applying in person for a transfer. The Clerk shall strike through the last address, ward and precinct number and record the new address, ward and precinct number on the original and duplicate registration cards, and shall place the original registration card in proper precinct file. Such transfers shall not be made after the Fifth Friday next preceding any regular or special election or primary election, (unless such Fifth Friday shall fall on a legal holiday in which event registration transfers shall be accepted during the following day.)

### Transfer of Registration On Election Day

SEC. 507. Any registered elector who has removed from one election precinct of a Township, City or Village to another election precinct of the same Township, City or Village and has not recorded such removal with the local Clerk shall execute a transfer of registration request, listing the new residence address, the ward over his signature, with the election board in the precinct in which he is registered at the next ensuing primary or election. The inspector of election in charge of the registration records shall compare the signature thereon with the signature upon the applicant's registration record and, if the signatures correspond, then the inspector shall certify such fact by affixing his initials upon said request. The applicant for transfer, after having signed an application to vote as provided by Section 493 of this act, shall then be permitted to vote in such precinct for that primary or election only. The application for transfer shall be filed with the Township, City or Village Clerk who shall transfer such voter's registration in accordance with the application. When the name of any street in a Township, City or Village has been changed, it shall be the duty of the Township, City or Village Clerk to make the change to show the proper name of street in the registration records, and it shall not be necessary for the elector to change his registration with respect thereto in order to be eligible to vote.

Thomas Neumeyer, Village Clerk

# ANNUAL TAX SALE OF PROPERTIES DELINQUENT FOR TAXES IN WASHTENAW COUNTY

Lands delinquent for real property taxes of 1975, and prior years are scheduled to be offered for sale by the County Treasurer at the Court House in:

Ann Arbor on May 2, 1978.

The legal description of properties to be offered for sale will be published on February 8, 1978; February 13, 1978 and February 22, 1978 in The Seline Reporter, Seline, Michigan.

ALLISON GREEN

State Treasurer

Lansing, Michigan

# VILLAGE CAUCUS

NOTICE is hereby given that an

## INDEPENDENT PARTY VILLAGE CAUCUS

for the purpose of placing in nomination candidates for the following Village Offices:

PRESIDENT

TREASURER

TRUSTEES

LIBRARY BOARD TRUSTEES

ASSESSOR

For the Village of Chelsea, County of Washtenaw, State of Michigan, and for the purpose of transacting such other business as may properly come before it, will be held at the

MUNICIPAL BUILDING

104 EAST MIDDLE STREET, CHELSEA

On Monday, the 13th day of Feb., 1978

at 8:00 o'clock p.m.

By Order of

THOMAS NEUMEYER

Village Clerk



# BOWLING NEWS

## Kahunas Mixed

Standings as of Jan. 20

	W	L
Whiteleafs	50	27
Ma Gu	48	29
Unstoppable	47	30
All Stars	46	31
Mayday	45	32
Mo and them three	44	33
The Fourtome	43	34
C & G and the Kids	42	35
The Ups and Downs	41	36
Udder Pools	40	37
Here-Bares	39	38
Proud Mary's Gang	38 1/2	40 1/2
The Boozers	37 1/2	41 1/2
Foot on the Floor	36 1/2	42 1/2
Knockout Funnies	35 1/2	43 1/2
Kahunas	34 1/2	44 1/2
Just for Fun	33 1/2	45 1/2
Good, Bad & Ugly	32 1/2	46 1/2

## Seven Point Mixed

Standings as of Jan. 30

	W	L
C-Ber's	100	54
Grass Lake Auto	96	58
Strike Outs	93	61
Team No. 1	87	67
Jiffy Mixes	78	76
Andy's Raiders	71	83
Utrogs	69	85
Wild Women	67	87
Devalder Farms	65	89
Elliott & Sons	45	109

## Unknowns League

Standings as of Jan. 28

	W	L
Streakers	88	59
Independents	84	63
Shady Ladies	78	69
Strikers	77	70
Fascinating "5"	61	86
Pin Dusters	53	94

## Rolling Pin League

Standings as of Jan. 20

	W	L
Grinders	61	27
Moppper Uppers	58	30
Egg Beaters	50	38
Sugar Bowls	47	41
Poachers	46	42
Sugar & Spice	45	43
Pois	44	44
Spooners	44	44
Sporadic Spatulas	43	45
Mixers	42 1/2	45 1/2
Jelly Rollers	42 1/2	45 1/2
Brooms	42	46
Beaters	41	47
Coffee Cups	41	47
Kitchen Kapers	40	48
Kpokie Kutters	39	49
Blenders	38	50
Jolly Mops	34	54

425 and over series: M. Kolan-

der, 447; G. Smith, 497; P. Borden, 491; E. Heller, 427; P. Smith, 437; P. Wurster, 457; R. Dils, 493; D. Thompson, 462; K. Hamel, 425; B. Halst, 427; D. Klink, 444; G. Clark, 463; E. Whitaker, 427; J. Edick, 445; D. Spalding, 442; E. Williams, 459; D. Farrington, 447; R. Foster, 488; J. Shepherd, 473; P. Poertner, 489.

150 and over games: M. Kolan-

der, 155; G. Smith, 189; 174; P. Borden, 162; 163, 166; D. Neuman, 157; D. Bollett, 153; C. Williams, 162; E. Heller, 151; R. Bable, 153; H. Ringe, 172; P. Smith, 152; P. Wurster, 166, 159; K. Neal, 153; D. Bell, 159; R. Dils, 164, 178; 156; D. Thompson, 151, 174; K. Hamel, 150, 157; A. Grau, 151; B. Halst, 160; D. Klink, 160, 167; G. Clark, 172, 177; G. Klink, 154; E. Whitaker, 162; D. Richmond, 151; P. Harook, 157; J. Edick, 171; D. Spalding, 173; E. Williams, 170, 156; A. Wahl, 156; D. Farrington, 150, 168; R. Foster, 164, 154, 150; J. Shepherd, 179, 154; B. Selwa, 152; M. Cox, 160; P. Poertner, 154, 178, 157.

## Senior House League

Standings as of Jan. 30

	W	L
Wolverine Bar	24	4
McCalla Feeds	22	6
Chelsea Grinding	21	7
Village Motor Sales	15	6
Mark IV Lounge	19	9
Steele's Heating	13	8
Schneider's Grocery	15	13
S. J. Custom	15	13
Sylvan Center	14	14
K. of C.	14	14
Frank Grohs Chevrolet	13	15
Wash. Crop Service	13	15
Walt's Barber Shop	9	12
Bauer Builders	7	14
Captains Table	9	19
Central Fibre	9	19
Gambles	6	22
Deansburro	0	28

600 series: M. McAllister, 613.

525 and over series: D. Bauer, 540; G. Biggs, 528; B. Ervin, 551; B. Stacey, 573; W. Beeman, 530; P. Kelly, 580; C. Stapish, 552; J. Eder, 562; F. Modrzewski, 565; H. Burnett, Jr., 581; J. Ladley, 552; K. McCalla, 546; J. Collins, 529; R. Kiel, 579; D. Buku, 556; M. Poertner, 572; D. Sweet, 541; M. Sweet, 531.

210 and over games: R. Kiel, 214; D. Wild, 214; G. Biggs, 212; M. McAllister, 235; 212; B. Ervin, 236.

## Cager of the Week



SCOTT PRICE (42), forward, made his debut with Chelsea's varsity basketball squad this season. Though the 6'1", 163-lb. junior is not yet a starter for the team, when he does come onto the court he averages close to two points per game. As a forward, Price said he is primarily responsible for "rebounding and taking the right shots." The cager's personal best performance this season came during Chelsea's encounter with Lincoln on Jan. 13. "I got in and played, and I scored," he explained. Price cited Chelsea's second game with Manchester on Jan. 17 as the team's best to date because in the game "we had poise, ran our offense, and played good defense." According to Price, Chelsea can expect either a second- or third-place finish in the league this year, and may even cap the season in a three-way tie for the conference title with Saline and Milan if the Bulldogs succeed in defeating both teams in games scheduled later this month. "Our defense is capable of holding off Saline and Milan," he said, "and our guards are quick." Price added Chelsea is playing with the best pair of guards in the league this season—Randy Harris and Marc Feeney. The cager, who also plays football for Chelsea High, is the son of Mr. and Mrs. Edward Price, of 527 Wilkinson St.

## Eighth Grade Cagers Cut Margin of Defeat

With maddening repetition, it was again only a matter of a basket or two that decided the game when Chelsea's 8th grade cagers lost their third consecutive contest Tuesday, Jan. 24. Brighton topped the Bullpups, 43-42.

"We had a chance to win the game by getting off two shots in the last 13 seconds," Chelsea Coach Ken Larson reported. "However, both shots hit the front rim of the basket and fell off."

The hard-luck Bullpups have now been dumped in four of their last five court appointments, progressively diminishing their margin of defeat by one point per encounter. Four games ago they lost by four points, while Tuesday the difference was down to only one.

Scoring for Chelsea were John Welton with 14 points, Mike Barrels, 14 points and 6 assists, Dave Peterson, 6 points, Geoff Shaw, 4 points, and Darrow Keezer, 4 points also.

Keezer led the squad with 9 rebounds, while Dave Peterson on defense came up with 7 steals.

The Bullpup record is now 2-6 as they prepare to host Grass Lake this afternoon.

## SCHOOL LUNCH MENU

Week of Feb. 6-Feb. 10

Monday—Hero burgers on a hot dog bun, cheese slice, cream-style corn, tater tots, rocky road pudding, milk.

Tuesday—Savory beef over biscuits, buttered carrots, bread and butter, peach dessert, milk.

Wednesday—Fish burgers with sauce, soup of the day, crackers, ice cream and cookie, milk.

Thursday—Hot dogs on a bun, trimmings, pork and beans, potato sticks, chocolate eclair, milk.

Friday—Pizza slice, corn, one-half of a peanut butter sandwich, juice, chilled pears, cookie, milk.

MIDDLE AGE EXCHANGE

Middle age is when the narrow waist and the broad mind change place.

## First Bicycle Society

The Boston Bicycle Club, founded Feb. 11, 1878, holds the honors as America's first bicycle society. The 14 original members sported uniforms consisting of gray shirts,

jackets, breeches, stockings and blue Glengary Scotch caps with a small visor in front. The Transportation Collections of Henry Ford Museum, Dearborn, offer a chance to trace the evolution of the bicycle from early bone-shaker to modern safety.

## NOW ON TUESDAY NIGHTS CHICKEN BUFFET

with our Famous Deep-Fried Chicken and SPECIAL BARBECUED CHICKEN also mashed potatoes and gravy, dressing, and salad bar.

Serving from 4:30-9:00

at the CAPTAINS TABLE 8093 MAIN ST., DEXTER PH. 426-3811

## Get Out of That Rut . . .

DON'T BE A "STUCK IN THE MUD"

## Call M & M GRAVEL CO.

Repair Your Old Driveway Or Build A New One!

WE CAN DO THE JOB . . . WE HAVE WHAT IT TAKES!

- ★ ROAD STONE
- ★ BASE STONE
- ★ DRAINFIELD STONE
- ★ WASHED SAND
- ★ PEA STONE
- ★ FILL DIRT

PHONE 475-1941

Or after 4 p.m. (313) 498-2866

Located 4 Miles North of Chelsea M-52 and ROE ROAD

PIT HOURS: 8 to 5 Mon. thru Fri. 8 to 12 Sat.

## SERVING SANDWICHES

from 11:00 a.m. till 2:00 a.m. Mon. thru Sat. Open Sunday 12:00 Noon Till 11 p.m.

BEER & WINE CARRY-OUT FOOD CARRY-OUT

## MARK IV LOUNGE

1180 M-52 Phone 475-1951 Chelsea

**OPEN BOWLING**  
MONDAY thru FRIDAY  
10:30 a.m. to 6 p.m.  
SATURDAY  
11 a.m. to 12 midnight  
SUNDAY  
12 noon to 5:30 p.m.

**CHELSEA LANES, Inc.**  
1180 M-52 Ph. 475-8141

## Be Careful in Your Choice of Vocational School

If you've decided that a vocational school is the next step for you, there are some questions you should ask before you select one.

To help you do this, the Department of Health, Education and Welfare has a new reprint that talks about what to watch out for. For your single free copy of Choosing a Vocational School, just send a postcard to the Consumer Information Center, Dept. 646F, Pueblo, Colo. 81009.

Choose a career carefully. The right education and skills can qualify you for a higher paying, more satisfying job. But the wrong course of study can waste thousands of dollars and months of your time. What should you look for?

First, watch out for gimmicks. If a school promises you a job at the end of your course, check out that promise by talking to former students who have been placed by the school. Don't be afraid to ask the school for names and addresses of former students. And check with prospective employers to see if they hire graduates.

Second, be sure that you understand the school's refund policy. If schools do not state in writing that they will give refunds under specified conditions, they usually won't. So, unless you have a written refund statement, you may not be covered if you get sick or just change your mind.

Third, find out about the instructor's qualifications. Do they have credentials from accredited institutions? Do they have experience in the subject area? Be sure you look at teacher turnover as well.

Fourth, if the school you're interested in has an open admissions policy—that is, they will admit anyone who enrolls and pays tuition—you should find out what extra services are available to students who might have difficulty with the course work. That way, you'll avoid the trap of paying for a course and then flunking out.

Fifth, remember never to sign any agreement until you've read it thoroughly. The school catalog or brochure should state the total costs for attending, including tuition, books, labs and graduation fees. The contract you for refunds and cancellations. And all promises should be in writing.

If you do have a complaint against the school, register it in person with officials of the school administration. If you don't get satisfaction, put your complaint in writing to your local consumer protection office.

Choosing a Vocational School (free) is one of over 200 selected federal consumer publications listed in the Winter edition of the Consumer Catalog. The Catalog is published quarterly by the Consumer Information Center of the General Services Administration. You can get a free copy by sending a postcard to the Consumer Information Center, Pueblo, Colo. 81009.

available to everybody

you can depend on us...

**ANN ARBOR FEDERAL SAVINGS**

11 OFFICES TO SERVE YOU IN: ANN ARBOR, BRIGHTON, CHELSEA, DEXTER, MANCHESTER, SALINE, YPSILANTI • Member FSLIC

You can get a regular Passbook Certificate at Ann Arbor Federal Savings that pays you 7 1/2% interest annually. \* You can also get an IRA or KEOGH Retirement Passbook Certificate that pays you 7 1/2% interest annually.

So?

So it pays you to have all of your accounts at Ann Arbor Federal Savings where all of your money can earn the top rate allowed by law and where you can maintain tighter control over your savings program. May we also point out that with monthly compounding your money earns an effective annual rate of 8.03% and your savings are insured to \$40,000 with an agency of the federal government.

\*Federal regulations require a substantial penalty for early withdrawals from certificate accounts.

**7 1/2% PASSBOOK CERTIFICATE ACCOUNT**  
Term 72 Months  
Minimum deposit \$1000

**7 1/2% RETIREMENT CERTIFICATE ACCOUNT**  
Term 36 Months or more  
No minimum deposit



## DEATHS

### Mrs. Frank Dault

Area Nurse Dies Tuesday  
At Chelsea Hospital

Maxine Dault, 62, of 221 Glazier Rd., died Tuesday, Jan. 31 at Chelsea Community Hospital. She was born Nov. 3, 1915, in Detroit.

She married Frank Dault who preceded her in death on Oct. 10, 1969.

Mrs. Dault was a graduate of Harper Hospital School of Nursing, Detroit. She worked as a nurse at St. Joseph Mercy Hospital, Ann Arbor, and later at the Chelsea United Methodist Retirement Home.

She is survived by three sons, Jim and Tom Dault, both of Grass Lake, and Gary Dault of Conroe, Tex.; one sister, Mrs. George (Marjorie) Parker of Chelsea; and eight grandchildren.

Funeral services will be held Friday, Feb. 3, 1 p.m., at Staffan Funeral Home with the Rev. Ira L. Wood officiating. Burial will follow in Mt. Hope Cemetery, Waterloo.

### Mrs. Harold Brooks

Dies Jan. 26 at U-M Hospital  
Following Extended Illness

Carolyn H. Brooks, 66, of 190 East Ave., Grass Lake, died Thursday, Jan. 26, at University Hospital, Ann Arbor, following an extended illness. Born Oct. 19, 1911, in South Bend, Ind., she was the daughter of Thomas and Clara Nagy Horvath.

She was married to Harold H. Brooks in Bryan, O. He survives. Mrs. Brooks had resided in Chelsea before moving to the Grass Lake address, and had been a member of Chelsea's First Congregational church.

In addition to her husband, survivors include three sons, Thomas Brooks of Pinckney, Donald Brooks of Grass Lake, and Robert Brooks of Milan; two sisters, Marie and Helen Toth; two brothers, Steve and Rudy Horvath; two granddaughters, Lisa and Jenny Brooks; one grandson, Tommy Brooks; three brothers preceded her in death.

Funeral services were held Monday, Jan. 30, 2 p.m., at the Burghard-Cole Chelsea Chapel with the Rev. James Hynes of Dexter United Methodist church officiating. Burial followed in Oak Grove Cemetery.

Memorial contributions may be made to First Congregational church.

### Mrs. August Dorer

Dies Jan. 31 While  
Vacationing in Hawaii

Katherine Eder Dorer, 81, of 303 E. Middle St., died Tuesday, Jan. 31, while vacationing in Kahlui, Maui, Hawaii. She was born Jan. 26, 1897.

On Oct. 1, 1919, she married August Dorer. He preceded her in death on June 1, 1975.

Mrs. Dorer's body will be returned to Chelsea where funeral arrangements are pending at Staffan Funeral Home.

### Mrs. Clara Smith

Chelsea Man's Mother  
Dies at Nursing Home

Clara Uhl Smith, 88, of Logansport, Ind., mother of Ellsworth C. Smith, of 350 Washington St., died Wednesday, Feb. 1, at Cedar Knoll Rest Home, Grass Lake. She was born June 30, 1889.

Funeral arrangements are pending at Fisher Funeral Home, Logansport, Ind. Burial will be in Mt. Hope Cemetery, Logansport. Local arrangements are being handled by Burghard-Cole Chelsea Chapel.

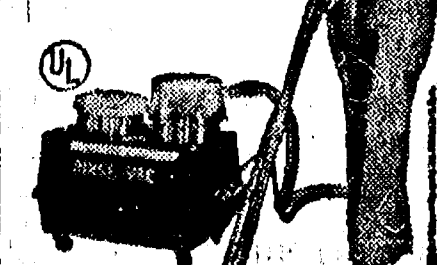
### Extra Special Issue

The first newspaper to be printed on a train was published by the ever-ingenuous Thomas Edison. While still a boy selling goods on the train between Port Huron and Detroit, Edison issued on Feb. 3, 1862, the first known issue of his one-page paper, the Herald. Many of Edison's inventions are on exhibit in Henry Ford Museum, Dearborn, and the adjacent Greenfield Village.

### BET PROFESSIONAL carpet cleaning results (At do-it-yourself prices)

RENT OUR RINSERVAC—the new portable, easy-to-use hot water extraction carpet cleaning machine that gently...

- Stains and dirt, grime and residue on the carpet surface where they are immediately vacuumed up
- Leave your carpets CLEAN and FRESH



Check Our Low Price

GAMBLES  
110 N. Main Ph. 475-7472

### Mrs. C. Fitzsimmons

Life-Long Lyndon Resident  
Dies at Chelsea Hospital

Laura B. Fitzsimmons, 79, of 11062 Goodband Rd., died Thursday, Jan. 26, at Chelsea Community Hospital. She was born Dec. 28, 1898, in Lyndon township, the daughter of Herman and Adell Hopkins Hudson.

She married Christopher Fitzsimmons on Feb. 10, 1922, and they lived at their centennial farm on Goodband Rd. all of her married life. Mr. Fitzsimmons died Nov. 28, 1960.

Mrs. Fitzsimmons was a member of North Lake Methodist church, the Washtenaw County Farm Bureau, and VFW Ladies Auxiliary No. 4076.

Survivors include two sons, Jack C. (Bob) Fitzsimmons, and Louis Fitzsimmons, both of North Lake; six grandchildren, two great-grandchildren; and several nieces and nephews.

Funeral services were held Monday, Jan. 30, 1:30 p.m., at Staffan Funeral Home with the Rev. John Elliott officiating. Burial followed in North Lake Cemetery.

### Arthur Moses

Dies at Chelsea Hospital  
Following Three-Year Illness

Arthur Moses, 64, of 657 Middle Ct., Apt. 18, and formerly of Pinckney, died Thursday, Jan. 26, at Chelsea Community Hospital following a three-year illness. Born April 24, 1913, in Savannah, Ga., he was the son of John and Evangeline Moses.

He married Jennie Mae Woolley in Fernandina, Fla., on March 28, 1940. She survives.

Mr. Moses was a member of the Greek Orthodox church, and retired from Hoover Ball & Bearing of Ann Arbor in April, 1975.

In addition to his widow, survivors include two step-daughters, Mrs. Vivian Bishop of Chelsea, and Mrs. Edith D. Perlongo, of Plymouth; one step-son, Ralph Curtis of Pinckney; one sister, Mrs. Genevieve Molis, of Savannah, Fla.; two brothers, Miller Moses, of Jacksonville, Fla., and Demikus Dejanikus, of Washington, D. C.; and 10 step-grandchildren.

Funeral services were held Sunday, Jan. 29, 2 p.m., at the Burghard-Cole Chelsea Chapel with the Rev. Marvin H. McCallum officiating. Burial followed in Oak Grove Cemetery on Monday, Jan. 30.

Memorial contributions may be made to the American Cancer Research Fund.

### Roger W. Geddes

Former Ypsilanti Resident  
Dies at Chelsea Hospital

Roger William Geddes, 68, of Burgaw, N. C. and formerly of Ypsilanti, died Friday, Jan. 27, at Chelsea Community Hospital. He was born Nov. 27, 1909, in Ypsilanti, to William R. and Minnie Simons Geddes.

On Dec. 29, 1935, he married Caroline Josephans in Wilmington, N. C. She preceded him in death.

Mr. Geddes was a retired loan officer at P.C.A.

Surviving are one daughter, Ruth Branch of Burgaw, N. C.; one son, Mike Geddes, also of Burgaw, N. C.; six grandchildren; one step-sister, Mrs. Paul (Ellen) Kalmbach of Chelsea; one step-brother, William R. Geddes, also of Chelsea; one aunt, Carrie Geddes; and several cousins.

Memorial services were held Tuesday, Jan. 31, 1 p.m., at the Burghard-Cole Chelsea Chapel with the Rev. Carl Schwarm officiating. Funeral services are pending at the Coble Funeral Home in Wilmington, N. C.

### Mrs. Emanuel Lambarth

Chelsea Woman's Sister  
Dies at Saline Hospital

Lydia B. Lambarth, 92, of Saline, died Thursday, Jan. 26, at Saline Community Hospital. Born Aug. 5, 1885, in Lima township, she was the daughter of John and Wilhelmina Wacker Kaercher.

On Jan. 20, 1915, she married Emanuel Lambarth in Lima township. Following their marriage, Mr. and Mrs. Lambarth moved to Saline where they farmed their property for many years. Mr. Lambarth died on May 29, 1962.

Mrs. Lambarth was a life-long resident of Washtenaw county, and was a member of St. John Lutheran church, Bridgewater. Surviving are one son, Robert E. Lambarth of Saline; two grandchildren, Mrs. Steve (Mary Jane) Ormsby and Lee Lambarth, both of Saline; two great-grandchildren; three sisters, Mrs. Carl (Minnie) Golenius of Ann Arbor, Mrs. William (Clara) Luck of Saline, and Mrs. Clarence (Alma) Bahnmiller of Chelsea; and several nieces and nephews. Three brothers and two sisters preceded her in death.

Funeral services were held Monday, Jan. 30, 1:30 p.m., at Bahnmiller Funeral Home, Saline, with the Rev. Dennis A. Falk officiating. Burial followed in Bethlehem Cemetery.

Memorial contributions may be made to the Educational Fund at St. John Lutheran church, Bridgewater, or to the Evangelical Home, 24000.



SCAT CONCERT SLATED: These three musicians whose over-riding goal is to continue growing and developing as artists, form the original core of SCAT, a four-member lounge band scheduled to present a free concert Sunday afternoon at the Herbert J. McKune American Legion Post Home at Cavanaugh Lake during the Legion's fifth annual Winter Carnival. From left, are Rich Harpster, percussion, drums, bells, and flute; Wynn Kanten, bass; and Tom Murray, lead guitar. Kanten is a Chelsea resident.

## SCAT Music Group To Present Concert Sunday at Legion Home

Almost anyone catching a performance by SCAT, the four-member lounge band scheduled to appear Sunday afternoon at the Herbert J. McKune American Legion Post Home at Cavanaugh Lake during the Legion's fifth annual Winter Carnival, can expect to return from the experience struck by the group's versatility and wholesome, well-blended sound.

The band derives its name from a verb meaning to improvise song to instrumental accompaniment, but in practice SCAT sticks close to already popularized melodies which span the past four decades. The group consists of two Chelsea musicians, Wynn Kanten, 33, on bass, and Chris Alber, 24, vocalist, along with Tom Murray, 31, of Dexter on guitar, and Rich Harpster, 29, of Cleveland on drums, percussion, bells and flute.

Together the four can switch in quick succession from the hard driving energy of rock to the easy tempo of a 40's swing tune, then on to a rhythm and blues number, or some country lyrics straight from the heart of Willie Nelson.

It is this tremendously varied repertoire that first brought SCAT to the attention of Chelsea's Legionnaires when they began planning Sunday's free concert to celebrate the opening of their newly expanded headquarters at Cavanaugh Lake.

With families forming the core of the crowd attending the annual Carnival, Legionnaires sought a band able to cater to a broad spectrum of musical tastes.

For members of SCAT, the upcoming concert in Chelsea means a chance to tune in a new audience outside of their more than 250-member following in the Ann Arbor area.

"We are reaching out for a larger audience because we need a constant turnover in crowd to maintain freshness," Kanten, spokesperson for the band, explained. "Because we mostly play lounge, we decided to try and bring non-bar people into bars."

As a lounge act, Kanten said SCAT specializes in "hit songs from a range of country to jazz and everything in-between," and strives to keep up with requests, 90 percent of which fall into what he calls "the middle bag." Occasionally though, someone from the remaining 10 percent speaks up.

"When a song is requested and we're unable to perform it as a production, we'll still attempt a few bars to make sure the person making the request feels we're in touch with them musically," he reported.

"We do just about anything the audience wants to hear," Kanten concluded. "When we sing a 40's tune, we try to do it like it was sung in the 40's, and when we play a disco number, we do it with full disco energy." According to the bass player, SCAT's ultimate compliment is a comment from someone in the audience that the band "sounds just like a record."

"We set out to be a good business venture," he elaborated, "so we need to perform music that sells to people, not necessarily what we want to do ourselves." By being commercial with the bulk of their music, Kanten feels members of the band can then insert the music they personally prefer into a set without alienating the audience.

"We just worked up an instrumental version of 'Meditations,' an old Latin standard, that isn't saleable," he acknowledged. "But we can still play it in a set if the audience is basically getting what it wants."

## CATS

CHELSEA AREA

TRANSPORTATION SYSTEM

Transportation for the Senior Citizens,  
65 years and Older,  
and the Handicapped.

CALL 475-9494

Between 9 to 11 a.m. or 1 to 3 p.m.

Service hours are 9 a.m. to 4:30 p.m. daily; Thurs., 9 to 1

### CHS Class of '68 Seeks Addresses For Classmates

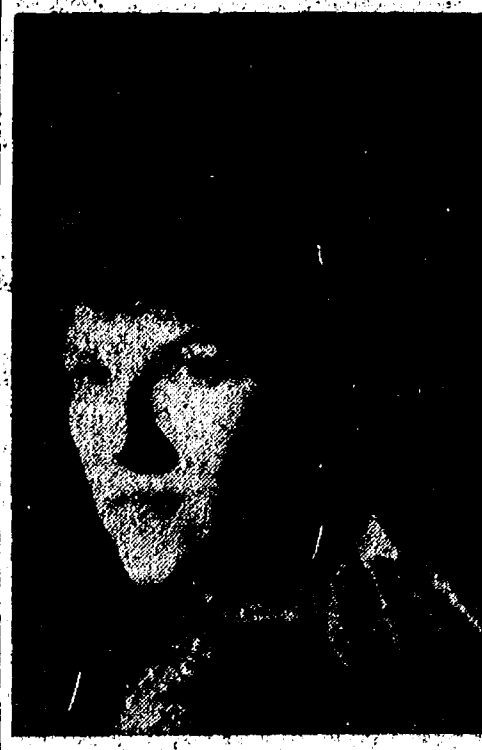
Members of the Chelsea High school Class of 1968 will meet again this week-end to continue organizing plans for their 10-year class reunion to be held this summer.

The meeting will be conducted at the home of Don and Wanda Koengeter, 2020 S. Lima Center Rd., Sunday, Feb. 5, at 3 p.m. Reunion planners are still seeking current addresses for 21 members of the Class of 1968.

They are: Maude Bell, Louie Deloy, Linda Farmakis, Sheila Fish, Susie Hayes, Archie Machnik, Rocky Mayne, Lynn Paxton, Sandy Reid, Don Rich, Patty Sears, Wanda Fletcher, Carol Sharrard, Paul Schake, Gary Gillespie, Donna Studebaker, Ralph Thomas, Bill Willat, Arlene Wengren, Mike Hendricks and Richard Hines.

Anyone knowing the address of any of those listed is asked to contact Mrs. Koengeter at 475-1069 or Janice Taylor at 475-9439.

Please Notify Us of  
Any Change in Address



CHRIS ALBER, a veteran of Chelsea High school musicals and now performing as a vocalist with the four-member lounge band, SCAT, will appear with the group Sunday afternoon when it presents a free concert at the Herbert J. McKune American Legion Post Home at Cavanaugh Lake. The concert, scheduled as a part of the Legion's fifth annual Winter Carnival, was also planned as a special event to celebrate the opening of the Legion's newly expanded headquarters.

## SCAT ALBUMS

Now Available

## HEYDLAUFF'S

113 N. MAIN ST., CHELSEA

### STORE - WIDE

## CLEARANCE

Extended thru this week because of the blizzard!

Women's and Children's

DRESSES - SKIRTS

JUMP SUITS

CO-ORDINATE GROUPS

Up to 1/2 OFF

Selected HEALTH-TEX Styles

Up to 1/3 Off

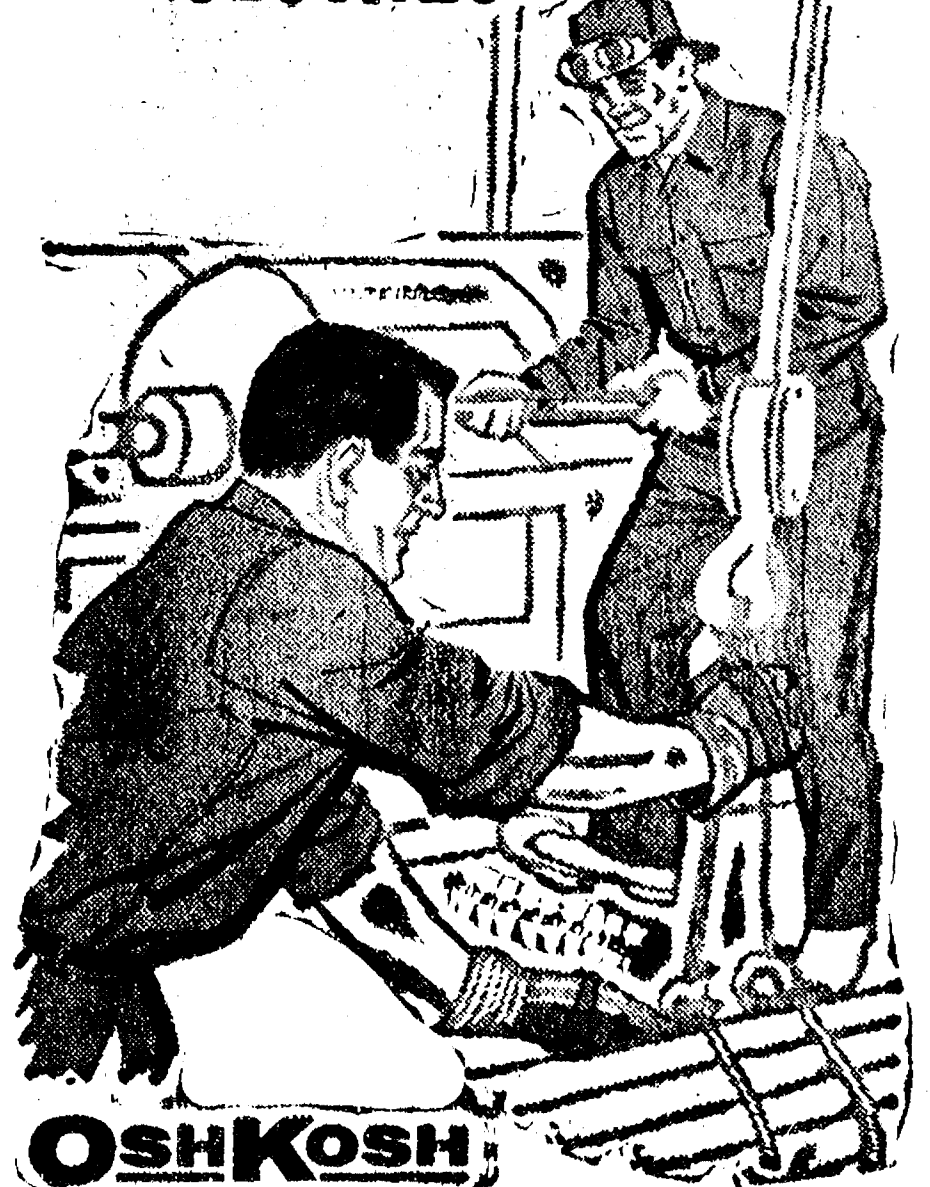
## VOGEL'S

109 S. MAIN ST.

PH. 475-1606

### OSHKOSH B'GOSH MATCHED SETS

## WORKINGMEN'S CLOTHES



OSHKOSH B'GOSH

STORE HOURS: Mon. thru Sat., 8 a.m. to 5:30 p.m.

## STRIETER'S MEN'S WEAR

Since 1914

JOHN L. GALLOWAY

## John Galloway Cited for 20 Years Service

Cooper Industrial Products will present a 20-year service award this month to John L. Galloway, field sales manager of its General Motors sales.

"Jack" joined Cooper in 1958 as sales representative in the Detroit area and was promoted to his present position in 1976. He has been instrumental in increasing the number of products and the sales volume to General Motors Divisions during his service with Cooper.

Galloway is a graduate of Royal Oak high school and is a member of the Inverness Country Club, Inverness Snowmobile Club and the Chelsea Rod & Gun Club.

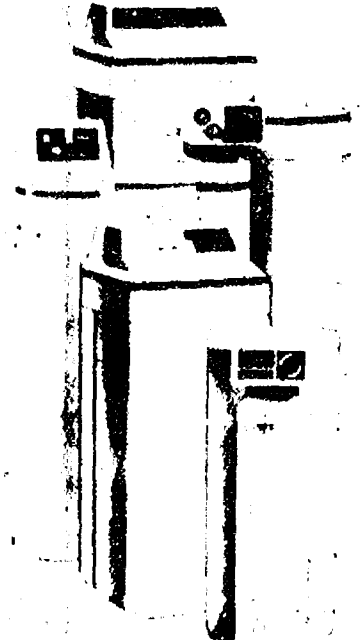
Jack and his wife, Joanne, have two boys, Brian, 17 and Bruce, 15. Both boys attend Stockbridge High school. The Galloways live at 239 Blind Lake Dr., Chelsea.

The vast majority of the construction and development at the Seney National Wildlife Refuge, near Seney, in Michigan's Upper Peninsula, was done by special government agencies such as the Civilian Conservation Corps, created in the 1930's to help relieve unemployment. Visitors to the refuge may see flocks of migrating Canadian geese—lured to the area by the Seney-reared geese—bald eagles, beaver and other wildlife in their natural habitats, according to the Travel Bureau, Michigan Department of Commerce.

Telephone Your Club News  
To 475-1371

If your water is  
hard,  
corrodes pipes,  
stains fixtures,  
tastes bad—  
then nothing  
in a  
can, box, or bottle  
can correct it.

Culligan  
can.



If the water in your house looks cloudy, stains wash and porcelain, tastes or smells bad, spots dishes or glassware, we'll test it for you free of charge.

We'll tell you exactly what the trouble is and recommend the best, most economical way to get clean, clear filtered fresh water.

Water conditioning is our full time business. We are local specialists backed by the world's leading maker of water conditioning products.

Simply call

662-5665

Culligan

1121 Jackson Ave., Ann Arbor





**6** CONVENIENT  
LOCATIONS

201 PARK AVE. V.L.  
1821 SPRING ARBOR RD.  
960 NORTH WEST AVE.  
1809 EAST MICHIGAN  
1101 M-52, CHELSEA  
3001 EAST MICHIGAN

**get to know us...**  
WE CAN HELP YOU SAVE ON YOUR FOOD BILL!

**Open Daily 8 to 10  
Sunday 9 to 9**

- ★ **QUALITY PRODUCE**
- ★ **QUALITY MEAT**
- ★ **COLD BEER, WINE, LIQUOR**
- ★ **LOTTERY TICKETS**
- ★ **SIDES OF BEEF**
- ★ **FRUIT BASKETS**
- ★ **DRY CLEANING**
- ★ **PHOTO PROCESSING**
- ★ **VARIETY AT LOW PRICES**





BUY 2 • SAVE 60¢ WITH IN-STORE COUPON

**SEALTEST 1/2%  
LO-FAT  
MILK**

PLASTIC  
GALLON

**\$1.03**

SAVE 16¢ WITH IN-STORE COUPON

**KRAFT  
MIRACLE  
WHIP**

32-  
OZ.

**89¢**

CREAMETTE

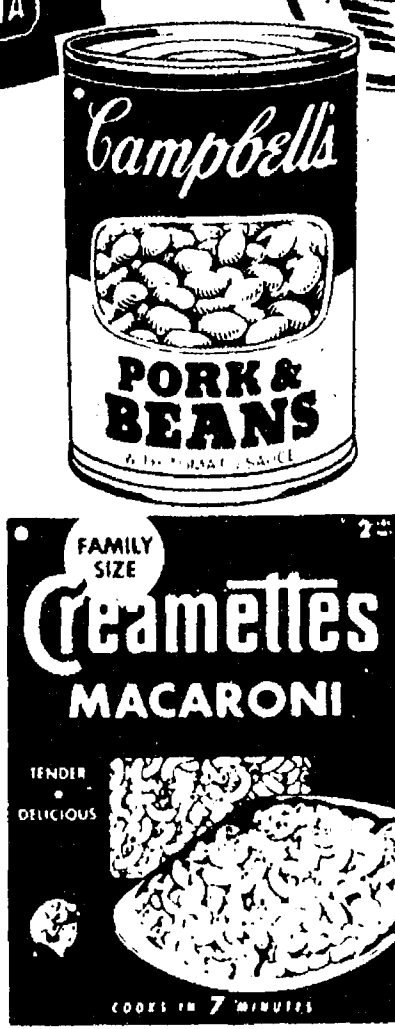
**ELBO  
MACARONI**

2-LB.  
BOX

**69¢**

**STARKIST  
CHUNK LIGHT  
TUNA**

**59¢**



CAMPBELL  
**PORK 'n  
BEANS**  
**4 / \$1**  
16-OZ.  
CANS

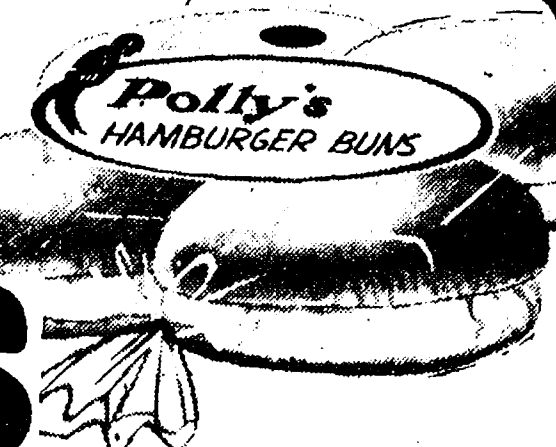


KRAFT  
**MIDGET  
LONGHORN**

**\$1.49**  
16-OZ.

SEALTEST  
**SOUR CREAM** 16-OZ. **59¢**  
ARMOUR  
**CHILI with BEANS** 15 1/2-OZ. **49¢**  
PETER PIPER FRESH  
**DILL PICKLES** 32-OZ. **69¢**  
KRAFT  
**1/2-MOON COLBY** 16-OZ. **\$1.49**  
10¢ OFF LABEL  
**DASH DETERGENT** 49-OZ. **\$1.19**  
TOTINO'S  
**PIZZAS** 13 1/2-OZ. **69¢**  
LACHOY  
**EGG ROLLS** 6 1/2-OZ. **49¢**  
LACHOY  
**CHOW MEIN** 16-OZ. **79¢**  
LACHOY  
**SWEET n' SOUR PORK** 15-OZ. **\$1.19**  
BORDEN  
**ICE CREAM SANDWICHES** 12-PK. **99¢**  
LACHOY  
**FRIED RICE with MEAT** 12-OZ. **75¢**

POLLY'S QUALITY  
**HAMBURG  
or  
HOT DOG  
BUNS**  
**3 89¢**  
8-CT.  
PAKS



JIFFY  
ASSORTED  
**MUFFIN  
MIXES**

**5 / \$1**  
7/8-OZ.  
PACKAGES

- CORN
- BRAN/DATE
- BLUEBERRY
- APPLE/CINN

SAVE 13¢ WITH IN-STORE COUPON

13¢ OFF LABEL  
**DAWN** 22-  
OZ.  
DISH DETERGENT

**69¢**

SAVE 40¢ WITH IN-STORE COUPON

**DASH**  
50¢ OFF LABEL

**\$4.39**  
211-OZ.



SAVE UP TO 40¢ WITH IN-STORE COUPON  
HINCKLEY & SCHMITT

**DISTILLED  
WATER**

**39¢**  
PLASTIC  
GALLON

SAVE 50¢ WITH IN-STORE COUPON

BANQUET WHOLE  
**FRIED  
CHICKEN**

32-  
OZ.

**\$1.79**

SAVE 16¢ WITH IN-STORE COUPON

BORDENS  
**SHERBET**

HALF-  
GALLON

**77¢**

SAVE 21¢ WITH IN-STORE COUPON

KRAFT  
**PARKAY  
MARGARINE**

**2 89¢**  
1-LB.  
QTRS.





**SIRLOIN  
STEAK**

**\$1.68**

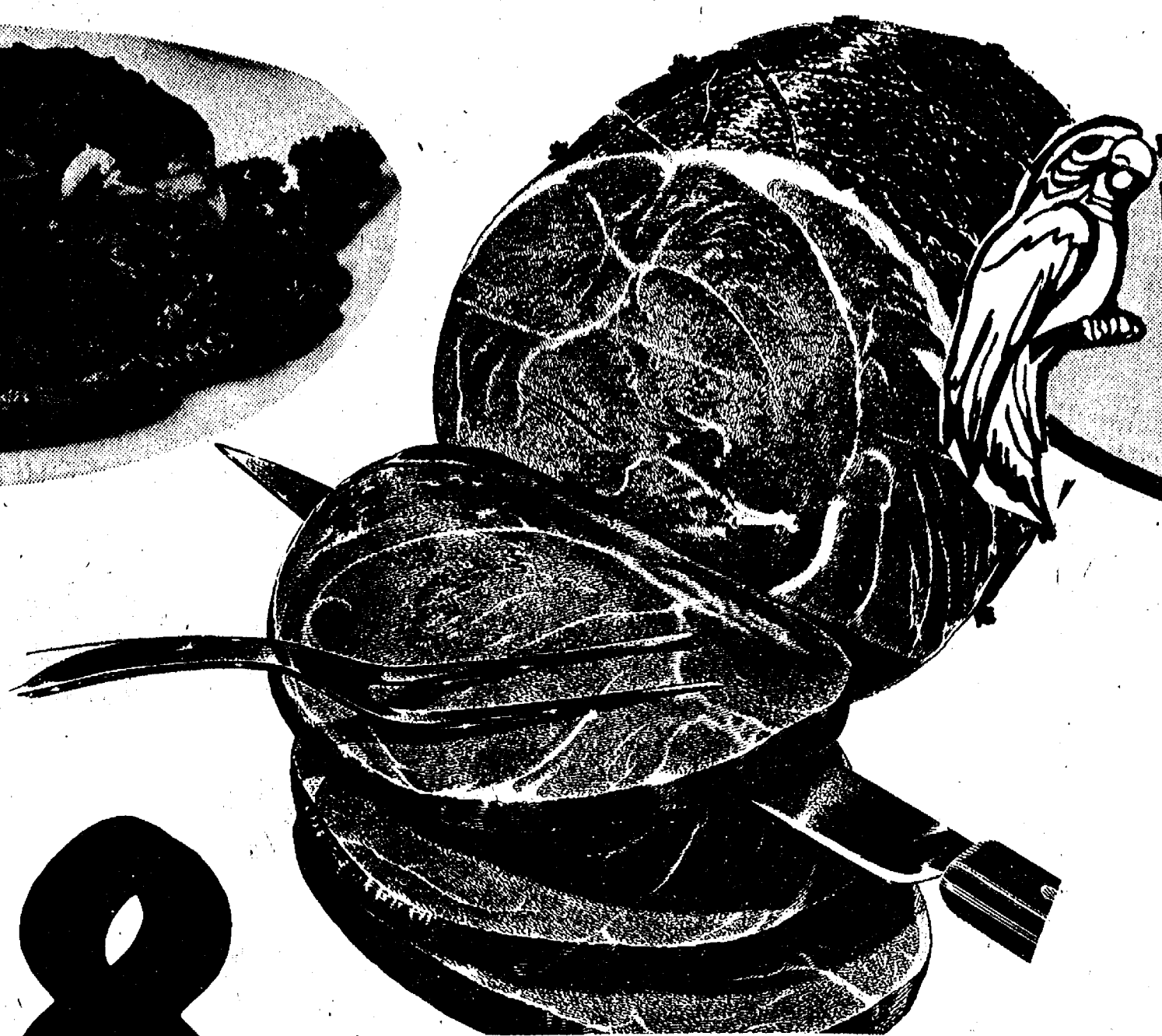
lb.

U.S.D.A. CHOICE BONELESS

**CHUCK  
ROAST**

LB.

**98¢**



ECKRICH ALL MEAT or BEEF

**HOT  
DOGS**

LB.

**98¢**

**Polly's**  
MASTER MARKETS

6 CONVENIENT  
LOCATIONS

201 PARK AVE. V.L.  
1821 SPRING ARBOR RD.  
960 NORTH WEST AVE.  
1809 EAST MICHIGAN  
1101 M-52, CHELSEA  
3001 EAST MICHIGAN

**BONANZA  
HAM**

**\$1.58**

FRESH GRADE A  
WHOLE

**FRYERS**

LB.

**48¢**

POLLY PRIDE  
GROUND

**BEEF CHUCK**

LB.

**98¢**

POLLY PRIDE

**CUBE STEAK**

LB.

**\$1.48**

U.S.D.A. CHOICE

**T-BONE STEAK**

LB.

**\$1.98**

U.S.D.A. CHOICE BONELESS

**ENGLISH ROAST**

U.S.D.A. CHOICE

**STEWING BEEF**

BOB EVANS

**SAUSAGE**

U.S.D.A. CHOICE BONELESS

**CHUCK STEAK**

STUFFED

**PORK CHOPS**

ECKRICH

**SMOKED SAUSAGE**

ARMOUR

**CALVES LIVER**

BONNEMAID

**VEAL PATTIES**

U.S.D.A. CHOICE

**BOSTON ROLLS**

LB.

**\$1.18**

LB.

**\$1.18**

1-LB. ROLL

**\$1.48**

LB.

**\$1.18**

LB.

**\$1.28**

LB.

**\$1.48**

LB.

**\$1.38**

LB.

**98¢**

LB.

**\$1.28**

FARMER PEET  
REPEATER

**BACON**

LB.

**\$1.29**

USDA CHOICE

**PORTERHOUSE  
STEAK**

LB.

**\$2.08**

U.S. NO. 1 VINE-RIPENED

**TOMATOES**

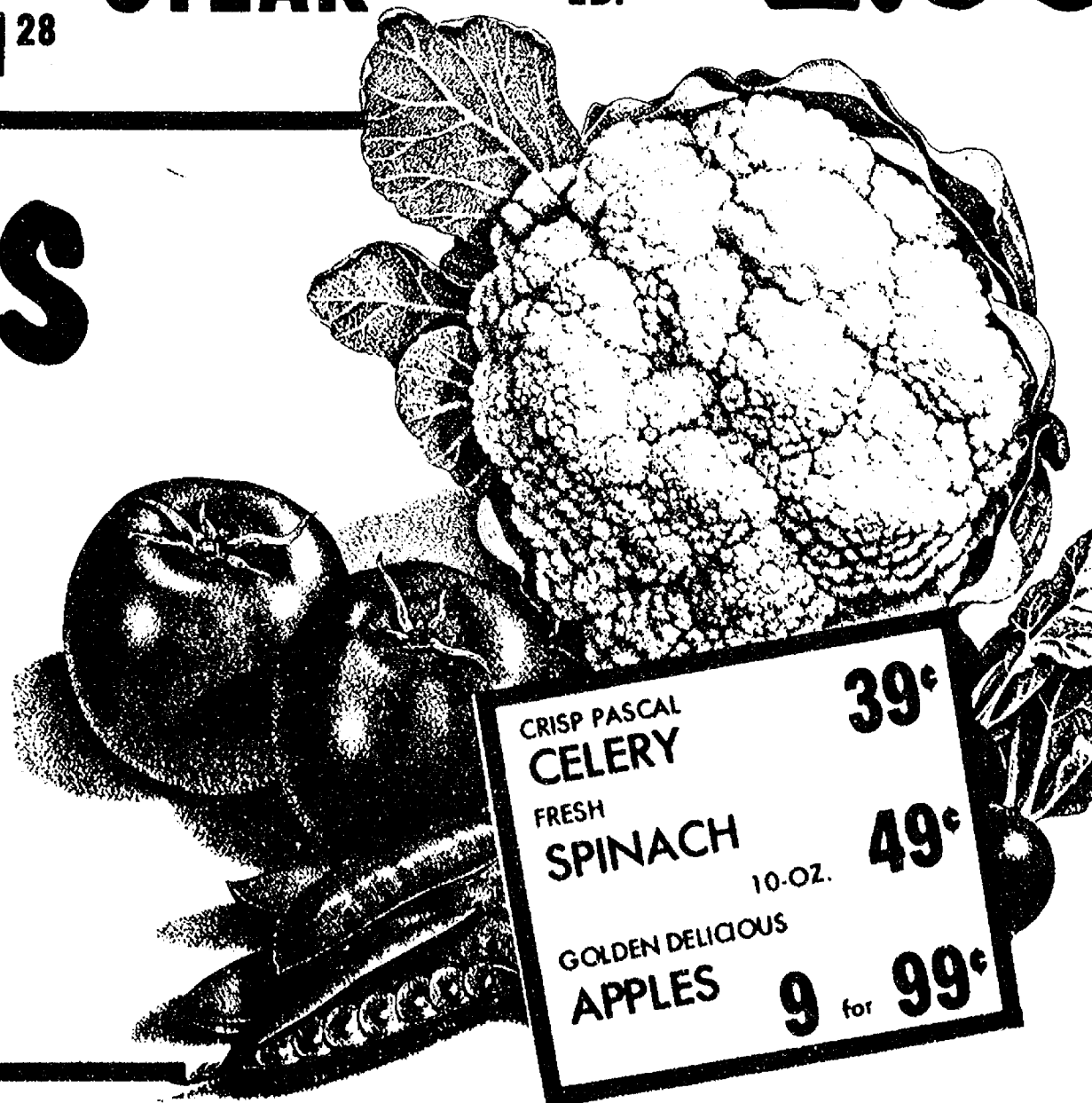
**8 for 79¢**

U.S. NO. 1

**ONIONS**

3-LB.  
BAG

**39¢**



CRISP PASCAL  
CELERY

**39¢**

FRESH  
SPINACH

**49¢**

GOLDEN DELICIOUS  
APPLES

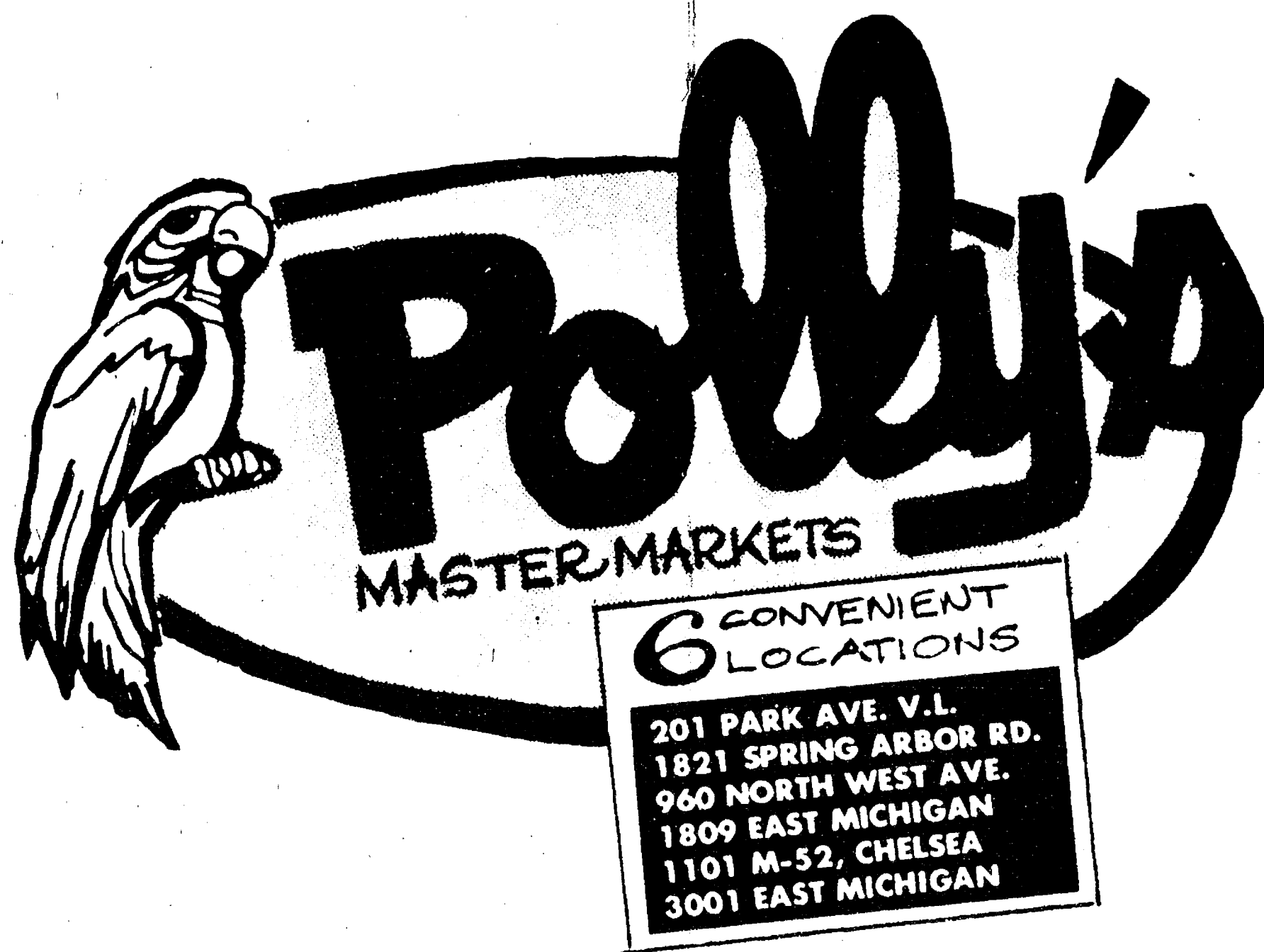
10-OZ.

**9 for 99¢**



# Thank You

FOR SHOPPING AT...



WHERE WE ARE  
HAPPY TO.....

# save YOU MONEY!